

"BC-02" 20 GA CHANNEL CAP W/
14. - 13 x 1.5" TRU DP1 12" O/C. W/
BUTYL SEALANT AT FLANGES
(MARRY TO VERTICAL SEALANT)

15.-13 x 1.3" TRU DP1 12" O/C
"BA-02" BASE ANGLE

NOTE: REFER TO DETAIL _E FOR
EDGE METAL ASSEMBLY
INFORMATION.

NOTE: BUTYL SEALANT AT WALL
JOINERY NOT SHOWN FOR CLARITY.
ENSURE ALL SEALANTS MARRY TO
CREATE A THERMAL ENVELOPE.

FILL VOID WITH ONE-PART
EXPANDING FOAM SEALANT

CONTINUOUS THERMAL
CUT FOR COLD STORAGE
APPLICATIONS

"WC-01" PANEL CLIP W/
() $\frac{1}{4}$ - 14 x _ HWH DP3 W/O
WASHER AT PANEL JOINT

ADHERED ONEDEK® FLASHING (REFER TO
ADHERED WALL FLASHING DETAILS ON _/_)

$1\frac{1}{2}$ "
MIN. WELD
(CONTINUOUS)

ONEDEK® THERMOPLASTIC ROOF
MEMBRANE (SEE "ONEDEK®
ROOFING MEMBRANE" FOR
ATTACHMENT OPTIONS)

12. - 24 x _ PNC DP4 W/ "RP-01"
ROOF DECK PLATE (REFER TO
RD1 FASTENING SYSTEM)

4" MIN.

BUTYL TAPE

EAVE STRUT (NOT BY
ONEDEK® SUPPLIER)

PARAPET W/ EDGE METAL (HIGH EAVE; COLD-STORAGE)

(SECTION VIEW)

DETAIL:

PARAPET W/ EDGE METAL (HIGH EAVE)

929 ALDRIDGE ROAD
VACAVILLE, CA 95688
TEL: (707) 359-2280
FAX: (707) 359-2286
WWW.AWIPANELS.COM

All Weather
Insulated Panels



APPLICATION:
RD1 ROOF DECK, COLD-STORAGE
AWIP DETAIL NUMBER:
RDR-ACS-HEW-005

DATE: 02/28/25

DRAWN BY: MMF

SHEET:

1

OF 1

"BC-02" 20 GA CHANNEL CAP W/
14. - 13 x 1.5" TRU DP1 12" O/C. W/
BUTYL SEALANT AT FLANGES
(MARRY TO VERTICAL SEALANT)

#12-14 x 1" TEK3 12" O/C

AF-55 FASCIA COVER (12'-0"
LENGTHS)

ANCHOR BAR EXTRUDED

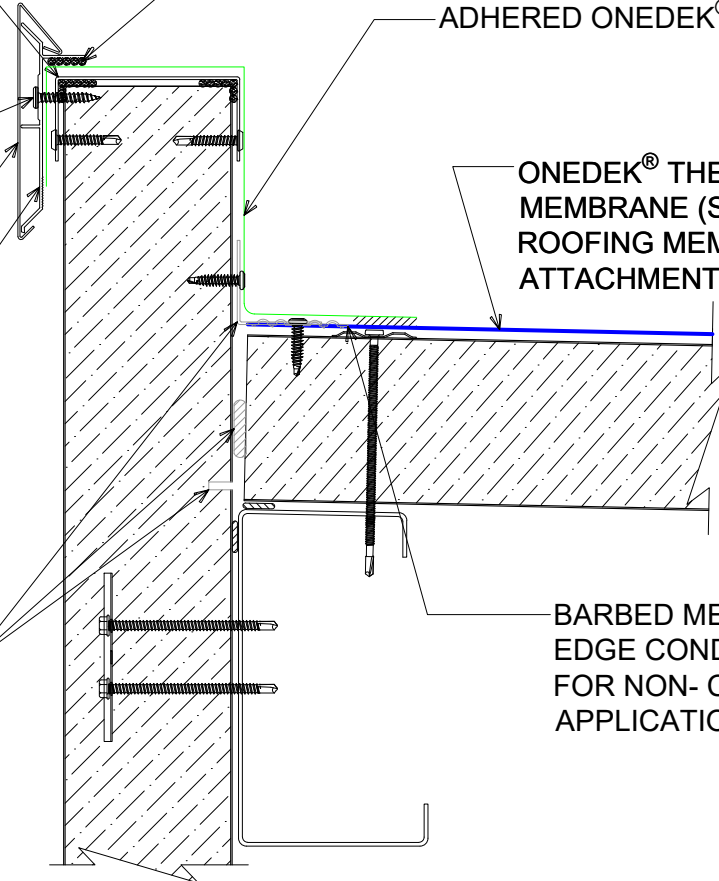
CONTINUOUS THERMAL CUT,
ONE-PART EXPANDING FOAM
SEALANT, AND SUPPORT ANGLE
ARE REQUIRED FOR COLD
STORAGE APPLICATIONS ONLY

BUTYL SEALANT

ADHERED ONEDEK® FLASHING

ONEDEK® THERMOPLASTIC ROOF
MEMBRANE (SEE "ONEDEK®
ROOFING MEMBRANE" FOR
ATTACHMENT OPTIONS)

BARBED MEMBRANE PLATE AT
EDGE CONDITION IS REQUIRED
FOR NON- COLD STORAGE
APPLICATIONS ONLY



#E PARAPET W/ EDGE METAL (HIGH EAVE)

(SECTION VIEW)

DETAIL:

PARAPET W/ EDGE METAL (HIGH EAVE), AF-55

APPLICATION:

RDI ROOF DECK, COLD-STORAGE

AWIP DETAIL NUMBER:

RDR-ACS-HEW-005

929 ALDRIDGE ROAD
VACAVILLE, CA 94688
TEL: (707) 359-2280
FAX: (707) 359-2286
WWW.AWIPANELS.COM

All Weather
Insulated Panels



SHEET:

1

OF 1

DATE:

02/28/25

DRAWN BY:

MMF

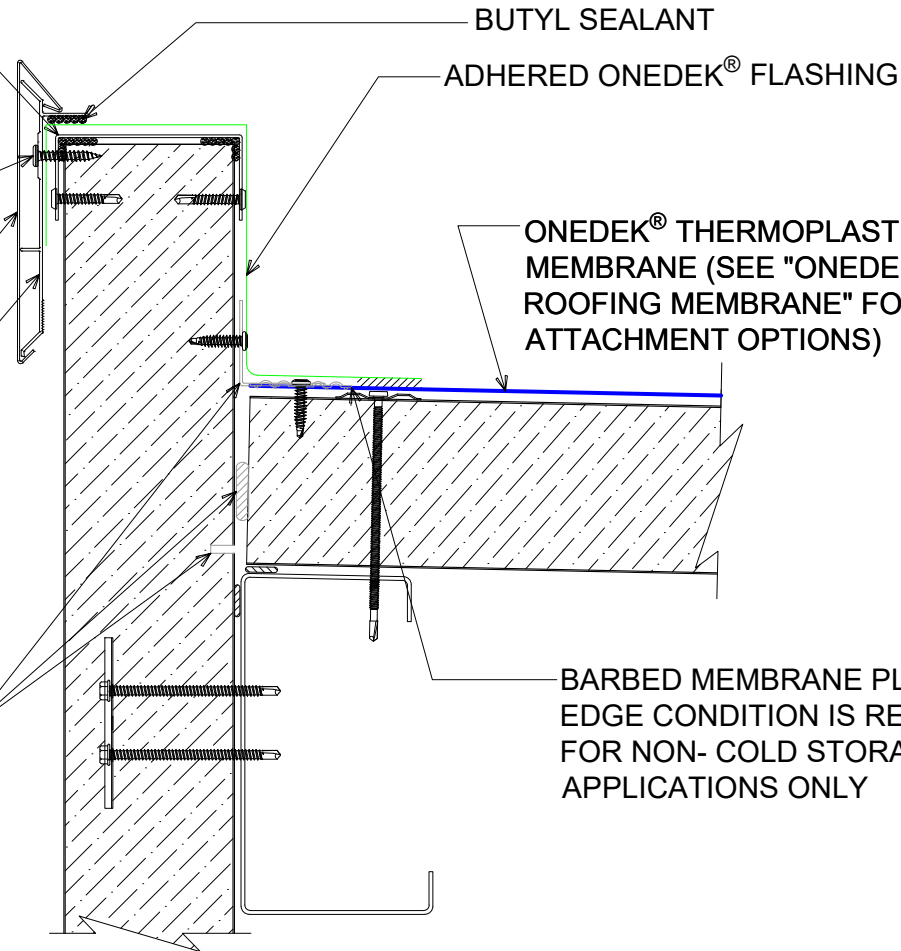
"BC-02" 20 GA CHANNEL CAP W/
14. - 13 x 1.5" TRU DP1 12" O/C. W/
BUTYL SEALANT AT FLANGES
(MARRY TO VERTICAL SEALANT)

#12-14 x 1" TEK3 12" O/C

AF-70 FASCIA COVER (12'-0"
LENGTHS)

ANCHOR BAR EXTRUDED

CONTINUOUS THERMAL CUT,
ONE-PART EXPANDING FOAM
SEALANT, AND SUPPORT ANGLE
ARE REQUIRED FOR COLD
STORAGE APPLICATIONS ONLY



BUTYL SEALANT

ADHERED ONEDEK® FLASHING

ONEDEK® THERMOPLASTIC ROOF
MEMBRANE (SEE "ONEDEK®
ROOFING MEMBRANE" FOR
ATTACHMENT OPTIONS)

BARBED MEMBRANE PLATE AT
EDGE CONDITION IS REQUIRED
FOR NON- COLD STORAGE
APPLICATIONS ONLY

#E PARAPET W/ EDGE METAL (HIGH EAVE)

(SECTION VIEW)

DETAIL:

PARAPET W/ EDGE METAL (HIGH EAVE), AF-70

APPLICATION:

RDI ROOF DECK, COLD-STORAGE

AWIP DETAIL NUMBER:

RDR-ACS-HEW-005

929 ALDRIDGE ROAD
VACAVILLE, CA 94688
TEL: (707) 359-2280
FAX: (707) 359-2286
WWW.AWIPANELS.COM

All Weather
Insulated Panels



SHEET:

1

OF 1

DATE:

02/28/25

DRAWN BY:

MMF