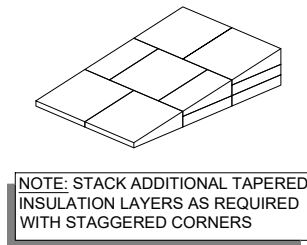
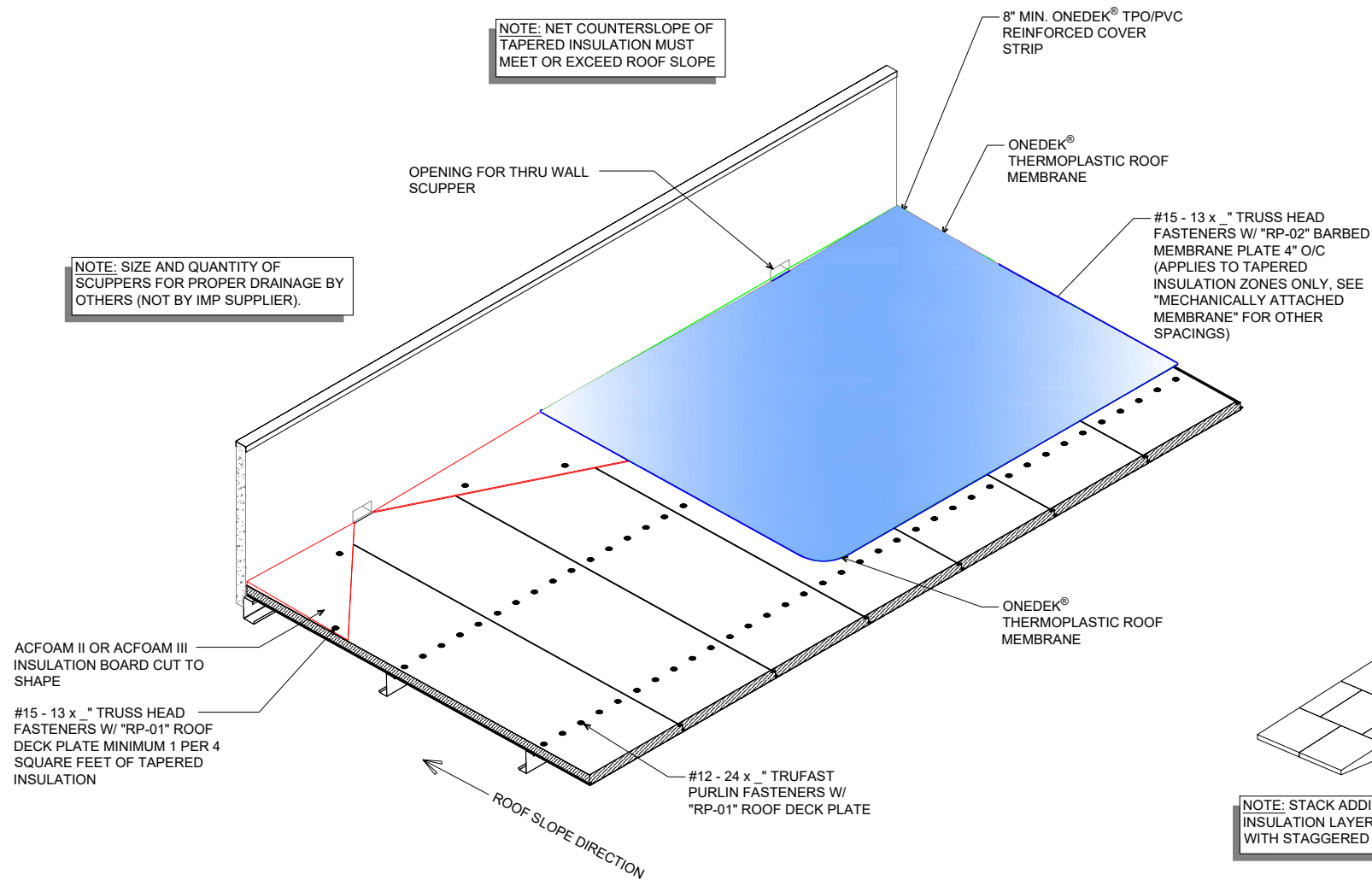


NOTE: NET COUNTERSLOPE OF TAPERED INSULATION MUST MEET OR EXCEED ROOF SLOPE

NOTE: SIZE AND QUANTITY OF SCUPPERS FOR PROPER DRAINAGE BY OTHERS (NOT BY IMP SUPPLIER).

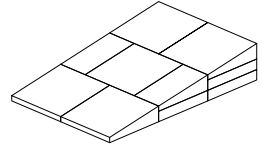
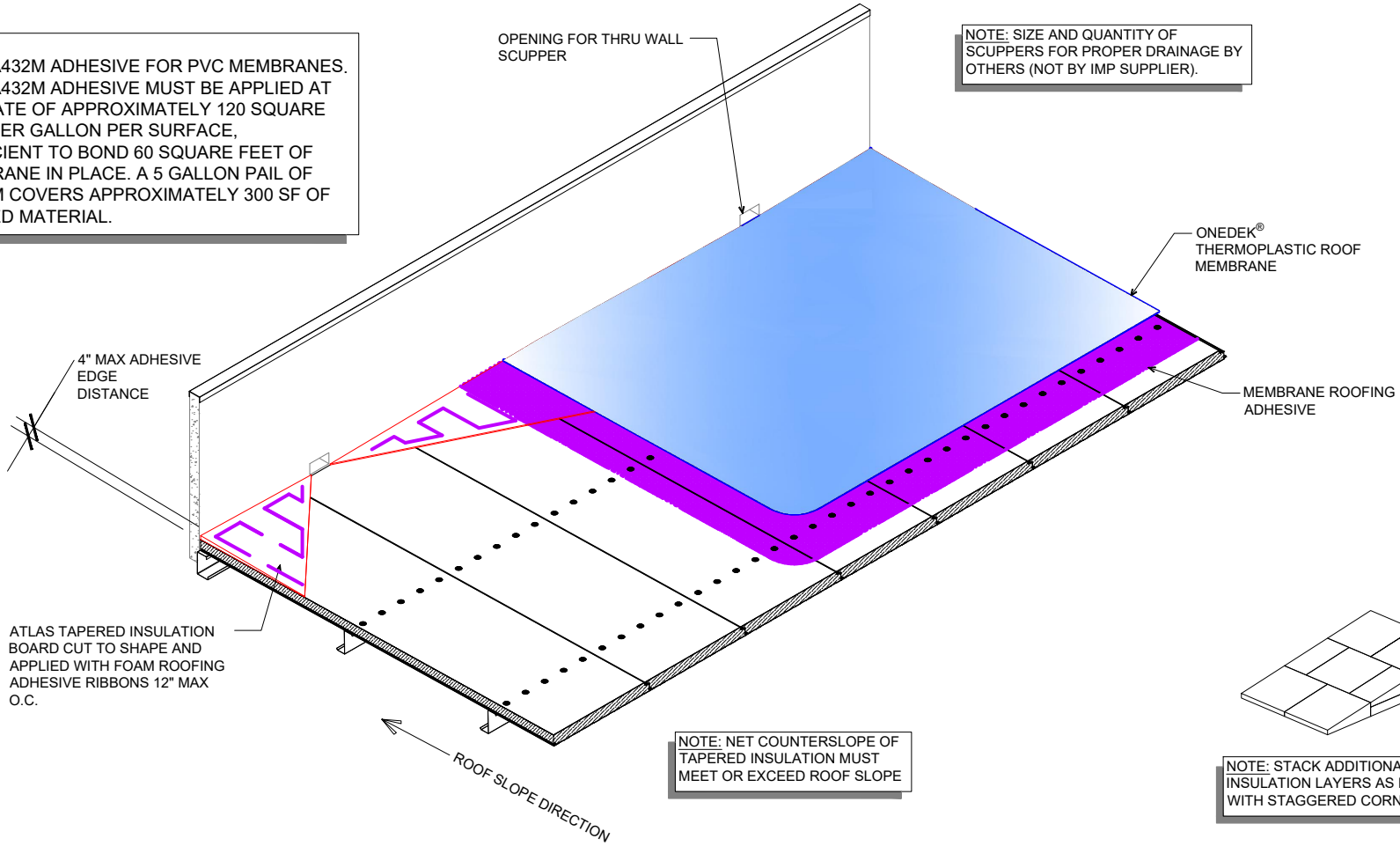


ONEDEK® TAPERED INSULATION AND SCUPPER INSTALLATION ALONG PARAPET (MECHANICALLY ATTACHED)
 (ISOMETRIC VIEW)

NOTE:
 USE LA505 ADHESIVE FOR TPO MEMBRANES.
 THE LA505 ADHESIVE MUST BE APPLIED AT
 THE RATE OF APPROXIMATELY 200 SQUARE
 FEET PER GALLON PER SURFACE,
 SUFFICIENT TO BOND 100 SQUARE FEET OF
 MEMBRANE IN PLACE. A 5 GALLON PAIL OF
 LA505 COVERS APPROXIMATELY 500 SF OF
 BONDED MATERIAL.

NOTE:
 USE LA432M ADHESIVE FOR PVC MEMBRANES.
 THE LA432M ADHESIVE MUST BE APPLIED AT
 THE RATE OF APPROXIMATELY 120 SQUARE
 FEET PER GALLON PER SURFACE,
 SUFFICIENT TO BOND 60 SQUARE FEET OF
 MEMBRANE IN PLACE. A 5 GALLON PAIL OF
 LA432M COVERS APPROXIMATELY 300 SF OF
 BONDED MATERIAL.

NOTE: SIZE AND QUANTITY OF
 SCUPPERS FOR PROPER DRAINAGE BY
 OTHERS (NOT BY IMP SUPPLIER).



NOTE: STACK ADDITIONAL TAPERED
 INSULATION LAYERS AS REQUIRED
 WITH STAGGERED CORNERS

NOTE: NET COUNTERSLOPE OF
 TAPERED INSULATION MUST
 MEET OR EXCEED ROOF SLOPE

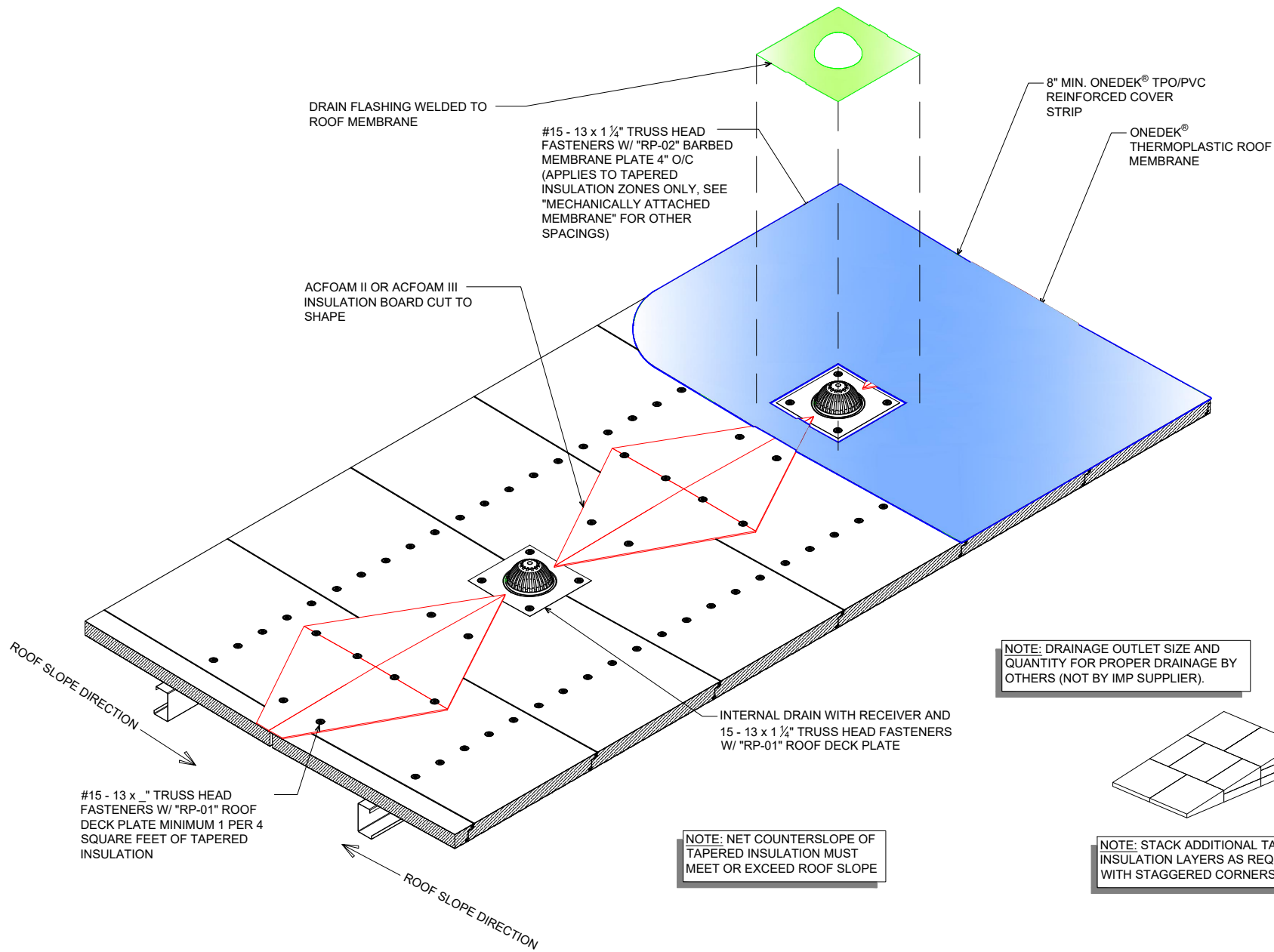
ONEDEK® TAPERED INSULATION AND SCUPPER
 INSTALLATION ALONG PARAPET (FULLY ADHERED)
 (ISOMETRIC VIEW)

DETAIL:	ONEDEK® TAPERED INSULATION AND SCUPPER INSTALLATION	
	DATE:	SHEET:
	11/06/23	1 OF 1
APPLICATION:	ONEDEK® FULLY ADHERED, COMMERCIAL & INDUSTRIAL, COLD-STORAGE	
AWIP DETAIL NUMBER:	RDR-C/ICS-DA-002	
DRAWN BY:	LDS	

929 ALDRIDGE ROAD
 VACAVILLE, CA 95688
 TEL: (707) 359-2280
 FAX: (707) 359-2286
 WWW.AWIPANELS.COM

All Weather
 Insulated Panels

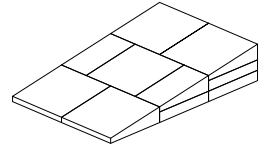




NOTE: DRAINAGE OUTLET SIZE AND QUANTITY FOR PROPER DRAINAGE BY OTHERS (NOT BY IMP SUPPLIER).

NOTE: NET COUNTERSLOPE OF TAPERED INSULATION MUST MEET OR EXCEED ROOF SLOPE

NOTE: STACK ADDITIONAL TAPERED INSULATION LAYERS AS REQUIRED WITH STAGGERED CORNERS



ONEDEK® TAPERED INSULATION AND INTERNAL DRAIN INSTALLATION (MECHANICALLY ATTACHED)
(ISOMETRIC VIEW)

DETAIL:

ONEDEK® TAPERED INSULATION AND INTERNAL DRAIN INSTALLATION

APPLICATION:
ONEDEK® MECHANICALLY ATTACHED, COMMERCIAL & INDUSTRIAL, COLD-STORAGE
AWIP DETAIL NUMBER:
RDR-C/ICS-DA-003

DATE:
11/06/23
DRAWN BY:
LDS

SHEET:
1 OF 1

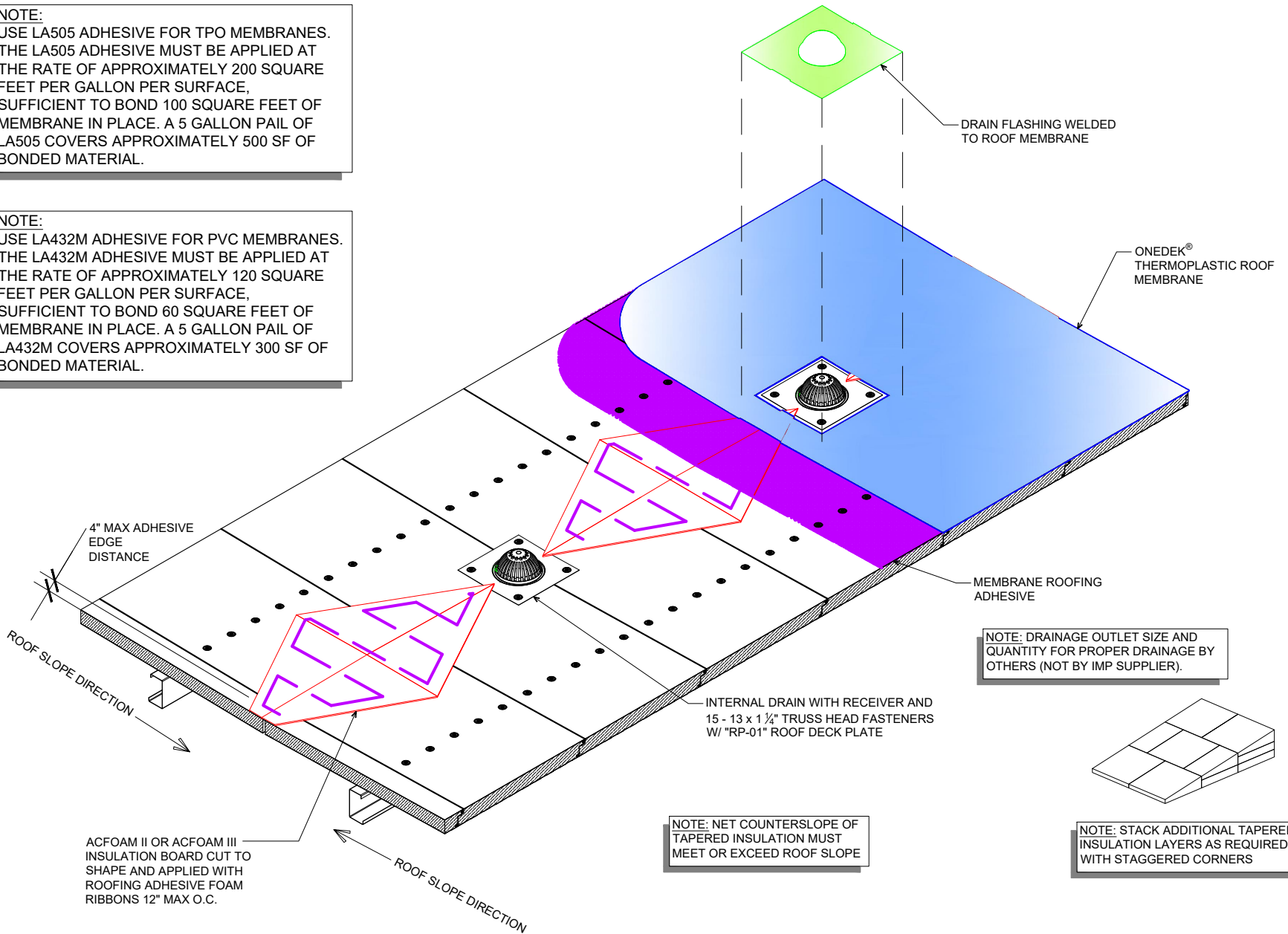
929 ALDRIDGE ROAD
VACAVILLE, CA 95688
TEL: (707) 359-2280
FAX: (707) 359-2286
WWW.AWIPANELS.COM

All Weather
Insulated Panels



NOTE:
 USE LA505 ADHESIVE FOR TPO MEMBRANES.
 THE LA505 ADHESIVE MUST BE APPLIED AT
 THE RATE OF APPROXIMATELY 200 SQUARE
 FEET PER GALLON PER SURFACE,
 SUFFICIENT TO BOND 100 SQUARE FEET OF
 MEMBRANE IN PLACE. A 5 GALLON PAIL OF
 LA505 COVERS APPROXIMATELY 500 SF OF
 BONDED MATERIAL.

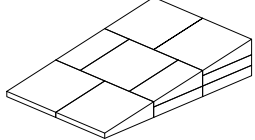
NOTE:
 USE LA432M ADHESIVE FOR PVC MEMBRANES.
 THE LA432M ADHESIVE MUST BE APPLIED AT
 THE RATE OF APPROXIMATELY 120 SQUARE
 FEET PER GALLON PER SURFACE,
 SUFFICIENT TO BOND 60 SQUARE FEET OF
 MEMBRANE IN PLACE. A 5 GALLON PAIL OF
 LA432M COVERS APPROXIMATELY 300 SF OF
 BONDED MATERIAL.



NOTE: DRAINAGE OUTLET SIZE AND
 QUANTITY FOR PROPER DRAINAGE BY
 OTHERS (NOT BY IMP SUPPLIER).

NOTE: NET COUNTERSLOPE OF
 TAPERED INSULATION MUST
 MEET OR EXCEED ROOF SLOPE

NOTE: STACK ADDITIONAL TAPERED
 INSULATION LAYERS AS REQUIRED
 WITH STAGGERED CORNERS



ONEDEK® TAPERED INSULATION AND INTERNAL DRAIN
 INSTALLATION (FULLY ADHERED)
 (ISOMETRIC VIEW)

DETAIL:

ONEDEK® TAPERED INSULATION AND INTERNAL DRAIN INSTALLATION		SHEET:	1 OF 1
APPLICATION:	DATE:	11/06/23	
ONEDEK® FULLY ADHERED, COMMERCIAL & INDUSTRIAL, COLD-STORAGE	DRAWN BY:	LDS	
AWIP DETAIL NUMBER:			
RDR-C/ICS-DA-004			

929 ALDRIDGE ROAD
 VACAVILLE, CA 95688
 TEL: (707) 359-2280
 FAX: (707) 359-2286
 WWW.AWIPANELS.COM



"BC-02" 20 GA CHANNEL CAP W/
#14 - 13 x 1½" TRUSS HEAD TEK
FASTENERS 12" O/C. W/ BUTYL
SEALANT AT FLANGES (MARRY TO
VERTICAL SEALANT)

W/ #12-14 x 1" TEK 3 STAINLESS
STEEL FASTENERS

8" WIDE CONCEALED SPLICE
PLATE, WITH DUAL NON-CURING
SEALANT STRIPS, AT EACH JOINT
GC-64 COPING COVER (12'-0"
LENGTHS)

ONEDEK® SCUPPER

ADHERED ONEDEK® FLASHING

#15 - 13 x _" TRUSS HEAD FASTENERS
W/ "RP-02" BARBED MEMBRANE
PLATE 4" O/C (APPLIES TO TAPERED
INSULATION ZONES ONLY, SEE
"MECHANICALLY ATTACHED
MEMBRANE" FOR OTHER SPACINGS)

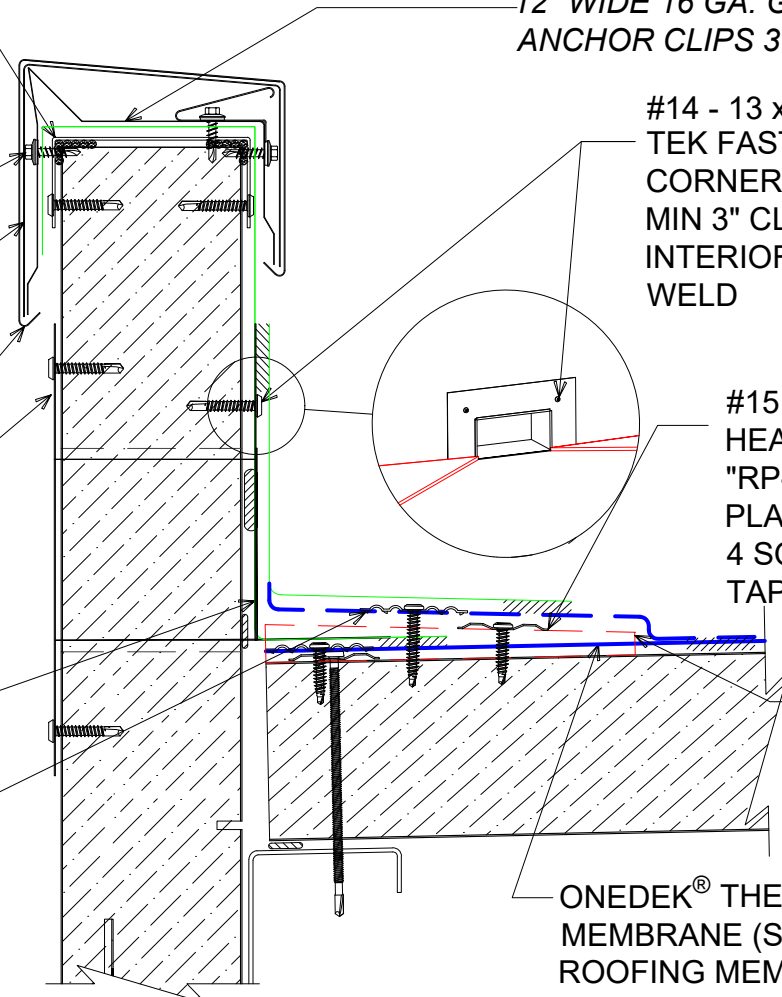
12" WIDE 16 GA. GALVANIZED
ANCHOR CLIPS 3'-0" O/C

#14 - 13 x 1½" TRUSS HEAD
TEK FASTENERS AT
CORNERS AND 6" MAX O.C.
MIN 3" CLEARANCE
INTERIOR FOR FLASHING
WELD

#15 - 13 x _" TRUSS
HEAD FASTENERS W/
"RP-01" ROOF DECK
PLATE MINIMUM 1 PER
4 SQUARE FEET OF
TAPERED INSULATION

ACFOAM II OR
ACFOAM III
TAPERED
INSULATION

ONEDEK® THERMOPLASTIC ROOF
MEMBRANE (SEE "ONEDEK®
ROOFING MEMBRANE" FOR
ATTACHMENT OPTIONS)



#E PARAPET W/ EDGE METAL AND SCUPPER (EAVE) (SECTION VIEW)

DETAIL:

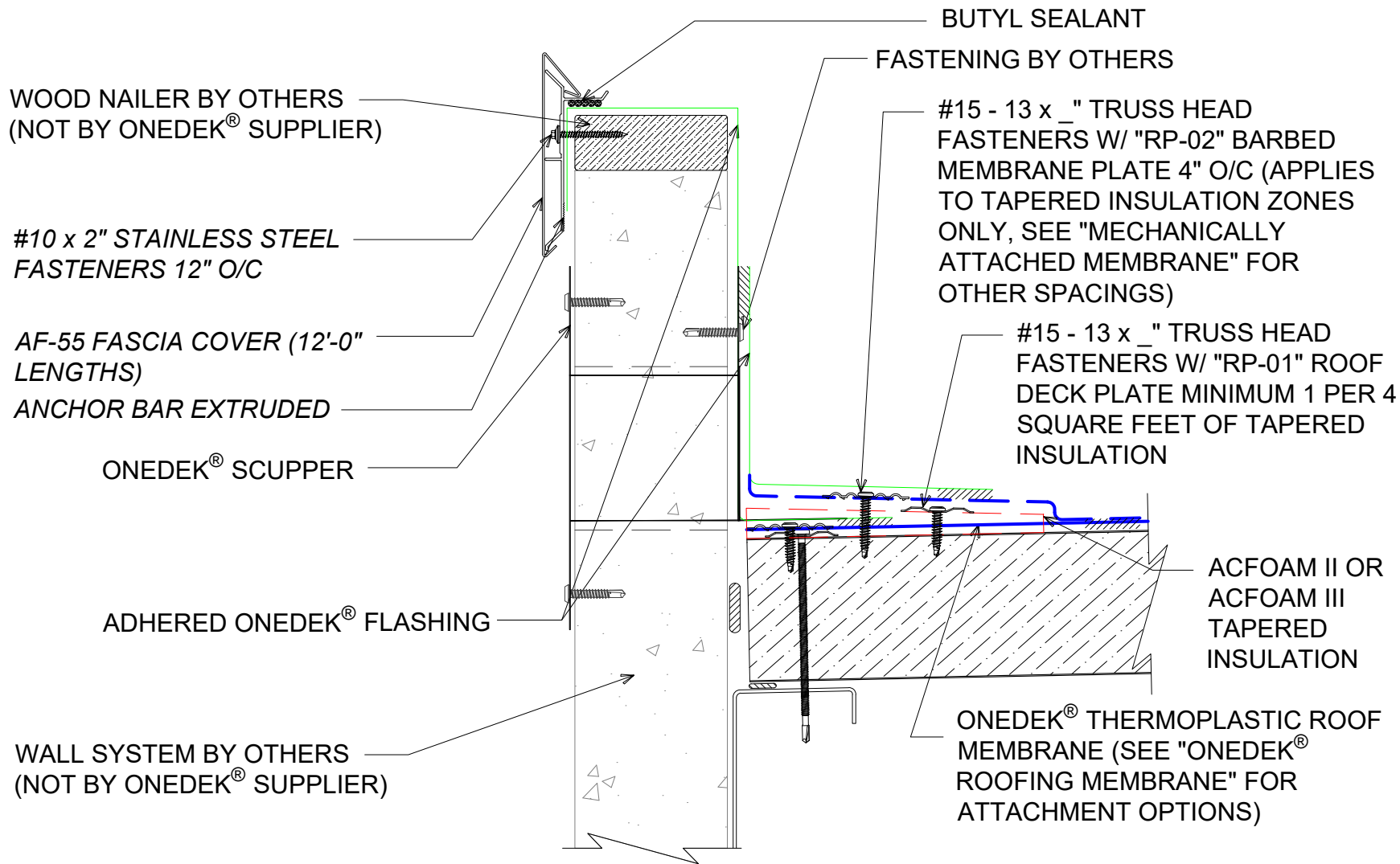
PARAPET WITH EDGE METAL AND SCUPPER (EAVE)

929 ALDRIDGE ROAD
VACAVILLE, CA 95688
TEL: (707) 359-2280
FAX: (707) 359-2286
WWW.AWIPANELS.COM

All Weather
Insulated Panels



APPLICATION: ONEDEK® MECHANICALLY ATTACHED, COMMERCIAL & INDUSTRIAL, COLD-STORAGE AWIP DETAIL NUMBER: RDR-CICS-DA-005	DATE: 11/06/23	SHEET: 1	OF 1
	DRAWN BY: LDS		



#E PARAPET W/ EDGE METAL AND SCUPPER
(EAVE)
(SECTION VIEW)

DETAIL:

PARAPET WITH EDGE METAL AND SCUPPER (EAVE)

APPLICATION:
ONEDEK® MECHANICALLY ATTACHED, COMMERCIAL & INDUSTRIAL, COLD-STORAGE
AWIP DETAIL NUMBER:
RDR-C/ICS-DA-006

DATE:
11/06/23

DRAWN BY:
LDS

SHEET:
1 OF 1

929 ALDRIDGE ROAD
VACAVILLE, CA 95688
TEL: (707) 359-2280
FAX: (707) 359-2286
WWW.AWIPANELS.COM



"BC-02" 20 GA CHANNEL CAP W/
#14 - 13 x 1½" TRUSS HEAD TEK
FASTENERS 12" O/C. W/ BUTYL
SEALANT AT FLANGES (MARRY TO
VERTICAL SEALANT)

W/ #12-14 x 1" TEK 3 STAINLESS
STEEL FASTENERS

8" WIDE CONCEALED SPLICE
PLATE, WITH DUAL NON-CURING
SEALANT STRIPS, AT EACH JOINT

GC-64 COPING COVER (12'-0"
LENGTHS)

ONEDEK® SCUPPER

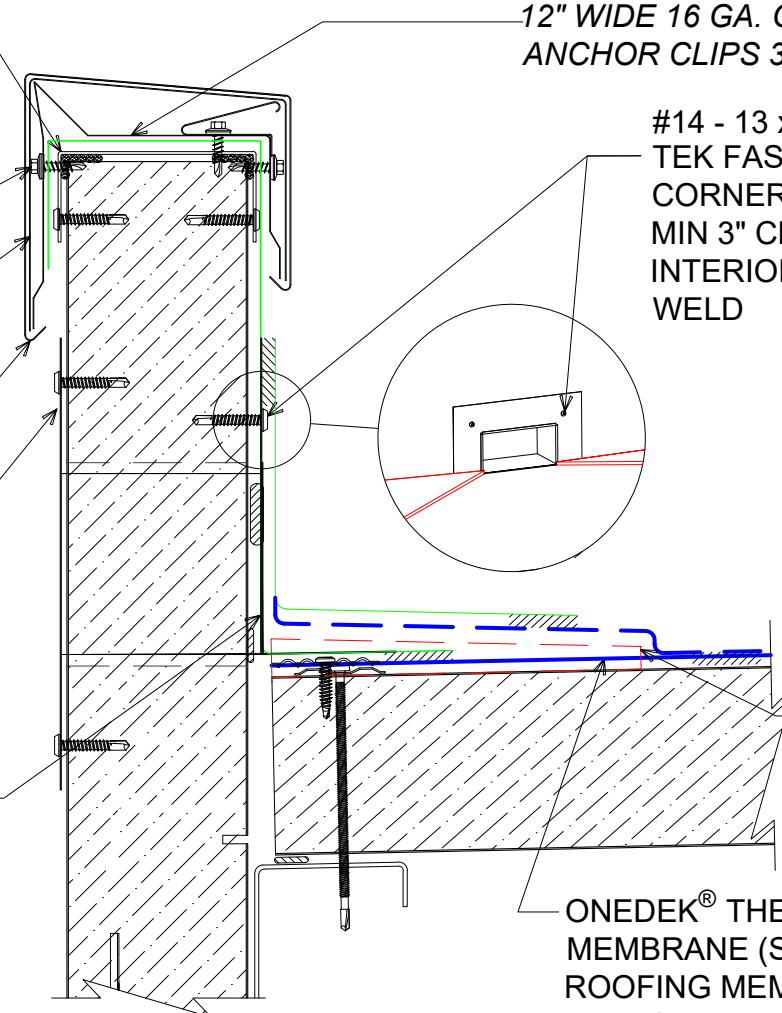
ADHERED ONEDEK® FLASHING

12" WIDE 16 GA. GALVANIZED
ANCHOR CLIPS 3'-0" O/C

#14 - 13 x 1½" TRUSS HEAD
TEK FASTENERS AT
CORNERS AND 6" MAX O.C.
MIN 3" CLEARANCE
INTERIOR FOR FLASHING
WELD

ACFOAM II OR
ACFOAM III
TAPERED
INSULATION

ONEDEK® THERMOPLASTIC ROOF
MEMBRANE (SEE "ONEDEK®
ROOFING MEMBRANE" FOR
ATTACHMENT OPTIONS)



#E PARAPET W/ EDGE METAL AND SCUPPER
(EAVE)
(SECTION VIEW)

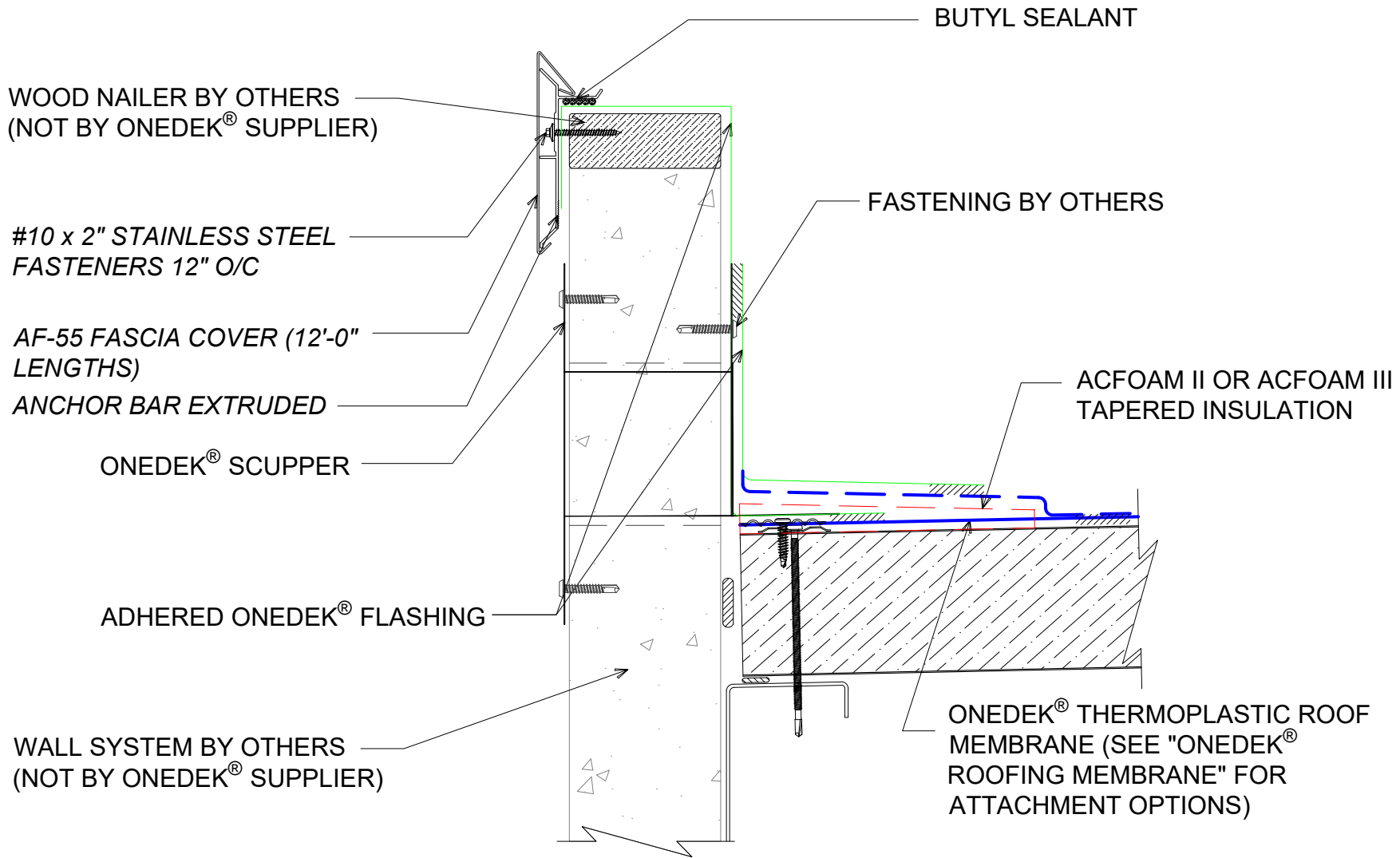
DETAIL:

PARAPET WITH EDGE METAL AND SCUPPER (EAVE)

DATE:	11/06/23	SHEET:	1	OF	1
APPLICATION:	ONEDEK® FULLY ADHERED, COMMERCIAL & INDUSTRIAL, COLD-STORAGE	DRAWN BY:	LDS		
AWIP DETAIL NUMBER:	RDR-C/ICS-DA-007				

929 ALDRIDGE ROAD
VACAVILLE, CA 95688
TEL: (707) 359-2280
FAX: (707) 359-2286
WWW.AWIPANELS.COM





#E PARAPET W/ EDGE METAL AND SCUPPER (EAVE)
(SECTION VIEW)

DETAIL:

PARAPET WITH EDGE METAL AND SCUPPER (EAVE)

APPLICATION:
ONEDEK® FULLY ADHERED, COMMERCIAL & INDUSTRIAL, COLD-STORAGE
AWIP DETAIL NUMBER:
RDR-CICS-DA-008

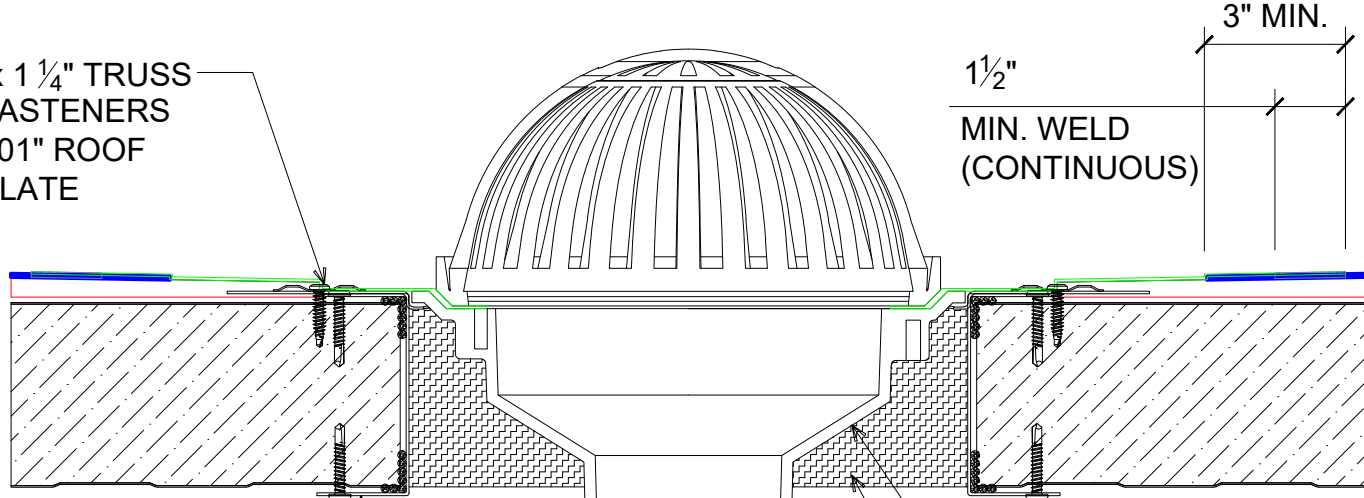
DATE: 11/06/23
DRAWN BY: LDS

SHEET: 1 OF 1

929 ALDRIDGE ROAD
VACAVILLE, CA 95688
TEL: (707) 359-2280
FAX: (707) 359-2286
WWW.AWIPANELS.COM



15 - 13 x 1 1/4" TRUSS
HEAD FASTENERS
W/ "RP-01" ROOF
DECK PLATE



1 1/2"
MIN. WELD
(CONTINUOUS)

3" MIN.

PIPE SIZE
12.5" MIN CUTOUT

INTERNAL DRAIN
WITH RECEIVER
FILL GAP CONTINUOUSLY
WITH TWO-PART
FOAMED-IN-PLACE
URETHANE; FOR DRY, MILD
CLIMATES COMPRESSIBLE
INSULATION MAY BE USED
(NOT BY IMP SUPPLIER)

"BC-02" 20 GA CHANNEL CAP W/ #14 - 13
x 1 1/2" TRUSS HEAD TEK FASTENERS 12"
O/C. W/ BUTYL SEALANT AT FLANGES
ON ALL 4 SIDES OF OPENING

INTERNAL DRAIN INSTALLATION (W/ TAPERED INSULATION)

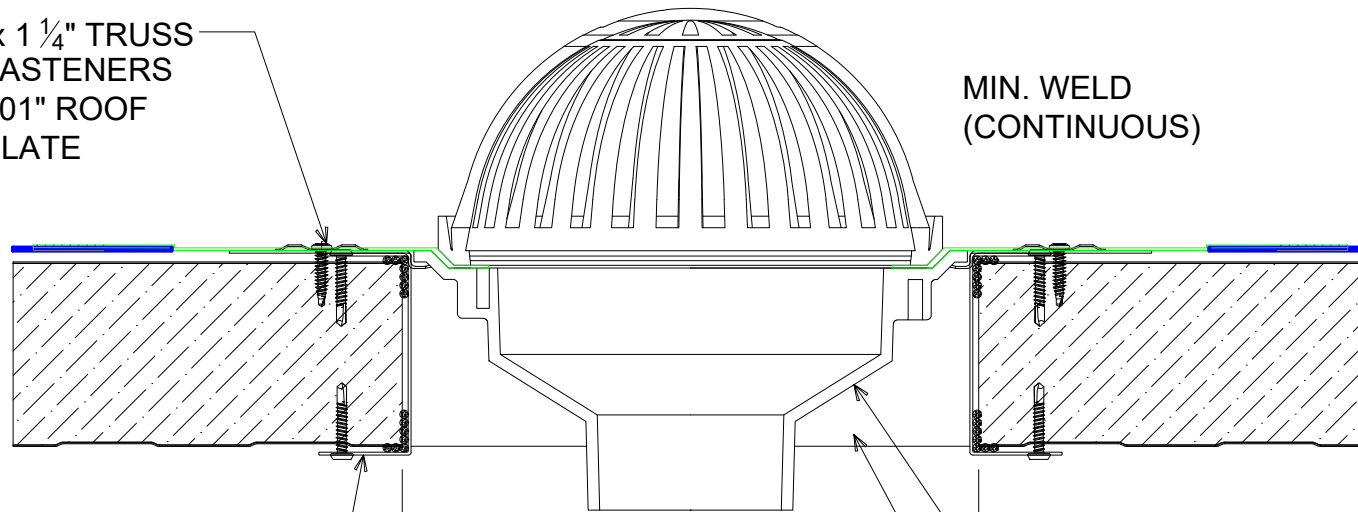
(SECTION VIEW)

DETAIL:	INTERNAL DRAIN INSTALLATION W/ TAPERED INSULATION		
	APPLICATION:	DATE:	SHEET:
	ONEDEK®, COMMERCIAL & INDUSTRIAL, COLD-STORAGE AWIP DETAIL NUMBER: RDR-CICS-DA-009	11/06/23	1 OF 1
		DRAWN BY:	LDS

929 ALDRIDGE ROAD
VACAVILLE, CA 95688
TEL: (707) 359-2280
FAX: (707) 359-2286
WWW.AWIPANELS.COM



15 - 13 x 1 ¼" TRUSS
HEAD FASTENERS
W/ "RP-01" ROOF
DECK PLATE



MIN. WELD
(CONTINUOUS)

PIPE SIZE
12.5" MIN CUTOUT

INTERNAL DRAIN
WITH RECEIVER

FILL GAP CONTINUOUSLY
WITH TWO-PART
FOAMED-IN-PLACE
URETHANE; FOR DRY, MILD
CLIMATES COMPRESSIBLE
INSULATION MAY BE USED
(NOT BY IMP SUPPLIER)

"BC-02" 20 GA CHANNEL CAP W/ #14 - 13
x 1 ½" TRUSS HEAD TEK FASTENERS 12"
O/C. W/ BUTYL SEALANT AT FLANGES
ON ALL 4 SIDES OF OPENING

INTERNAL DRAIN INSTALLATION (NO TAPERED INSULATION)

(SECTION VIEW)

DETAIL:

INTERNAL DRAIN INSTALLATION W/O TAPERED INSULATION

APPLICATION:
ONEDEK®, COMMERCIAL & INDUSTRIAL, COLD-STORAGE
AWIP DETAIL NUMBER:

DATE: 11/06/23
DRAWN BY: LDS

SHEET: 1 OF 1

929 ALDRIDGE ROAD
VACAVILLE, CA 95688
TEL: (707) 359-2280
FAX: (707) 359-2286
WWW.AWIPANELS.COM

