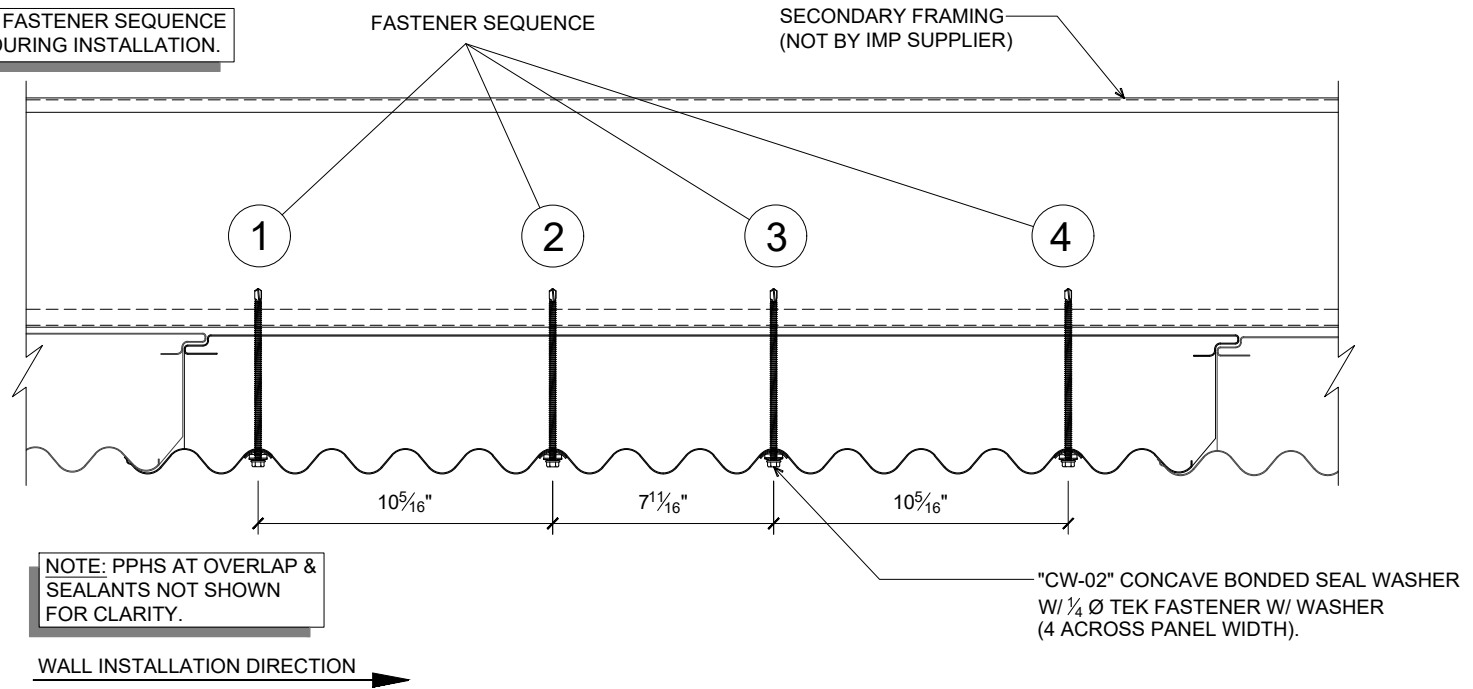


NOTE: ENSURE FASTENER SEQUENCE IS FOLLOWED DURING INSTALLATION.



## CW36 WALL PANEL THROUGH FASTENING

(PLAN VIEW)

DETAIL:

### WALL PANEL THROUGH FASTENING

APPLICATION:  
CW36 WALL, COMMERCIAL & INDUSTRIAL

AWIP DETAIL NUMBER:

CWW-ACI-FS-001

DATE:  
07/17/23

DRAWN BY:  
MMF

SHEET:

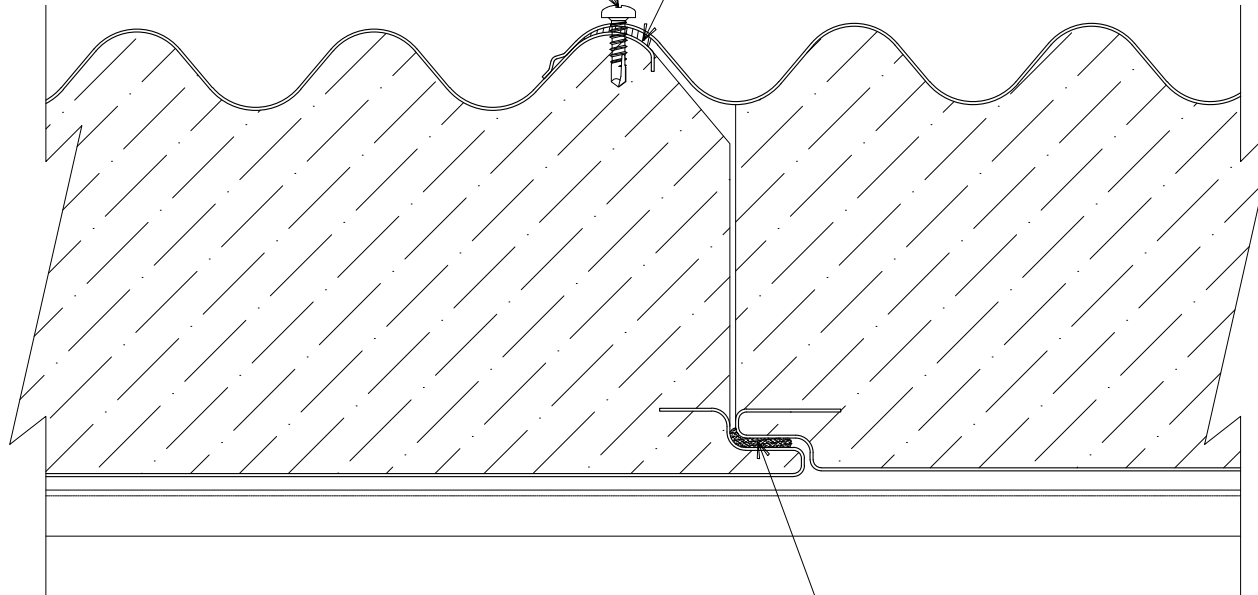
1 OF 1

929 ALDRIDGE ROAD  
VACAVILLE, CA 95688  
TEL: (707) 359-2280  
FAX: (707) 359-2286  
WWW.AWIPANELS.COM



PPH AT 8" ON CENTER

$\frac{3}{4}$ " x  $\frac{3}{32}$ " BUTYL TAPE SEALANT



FIELD-APPLIED CONTINUOUS  
 $\frac{3}{8}$ " DIAMETER BEAD (APPROXIMATE)  
OF NON-SKINNING BUTYL SEALANT

# CW36 WALL PANEL JOINT

(PLAN VIEW)

DETAIL:

## PANEL JOINT

APPLICATION:  
CW36 WALL, COMMERCIAL & INDUSTRIAL  
AWIP DETAIL NUMBER:  
CWW-ACI-PJ-001

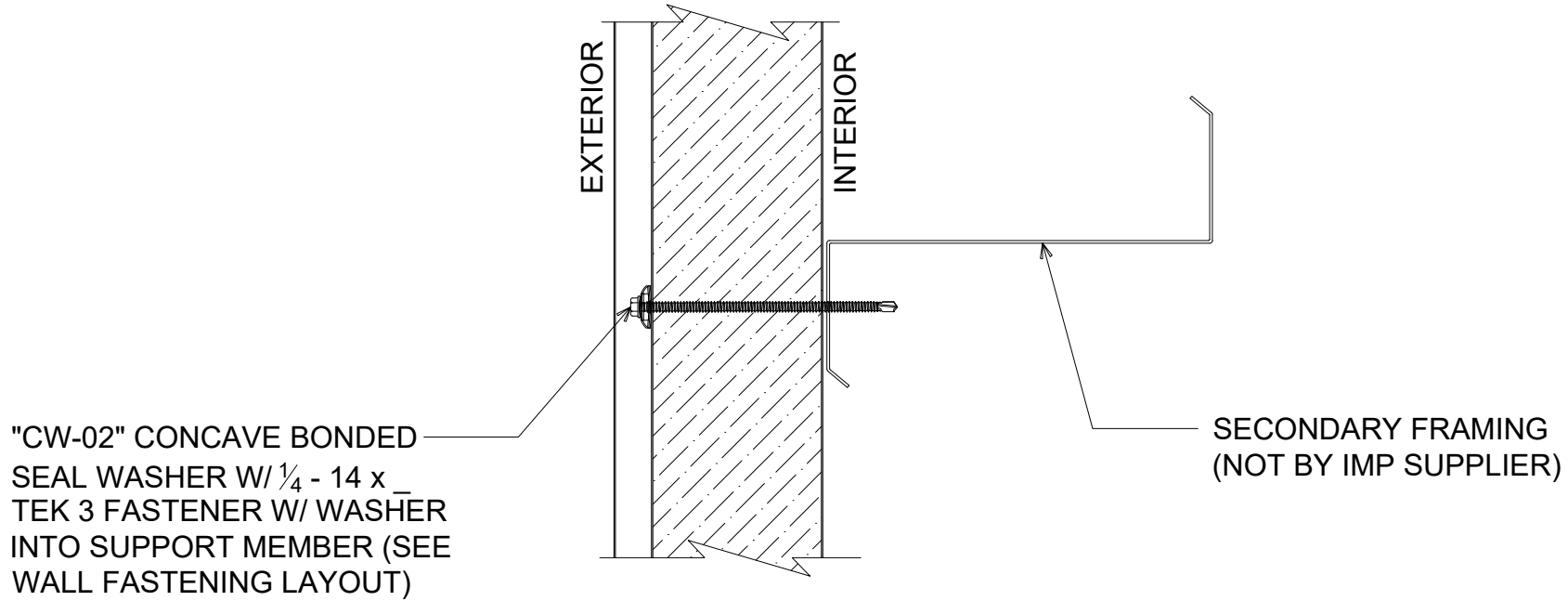
DATE:  
07/17/23  
DRAWN BY:  
MMF

SHEET:  
1 OF 1

929 ALDRIDGE ROAD  
VACAVILLE, CA 95688  
TEL: (707) 359-2280  
FAX: (707) 359-2286  
WWW.AWIPANELS.COM



NOTE: FASTENING SCHEDULE  
MAY VARY DEPENDING ON  
SPECIFIC APPLICATION.



## CW36 INTERMEDIATE WALL FASTENING

(SECTION VIEW)

DETAIL:  
**INTERMEDIATE WALL FASTENING**

APPLICATION:  
CW36 WALL, COMMERCIAL & INDUSTRIAL  
AWIP DETAIL NUMBER:  
CWW-ACH-W-001

DATE:  
08/24/22  
DRAWN BY:  
MMF

SHEET:  
1  
OF  
1

929 ALDRIDGE ROAD  
VACAVILLE, CA 95688  
TEL: (707) 359-2280  
FAX: (707) 359-2286  
WWW.AWIPANELS.COM

**All Weather**  
Insulated Panels



"CW-02" CONCAVE BONDED SEAL WASHER W/ 1/4" - 14 x 1/2" TEK 3 FASTENER W/ WASHER INTO SUPPORT MEMBER (SEE WALL FASTENING LAYOUT)

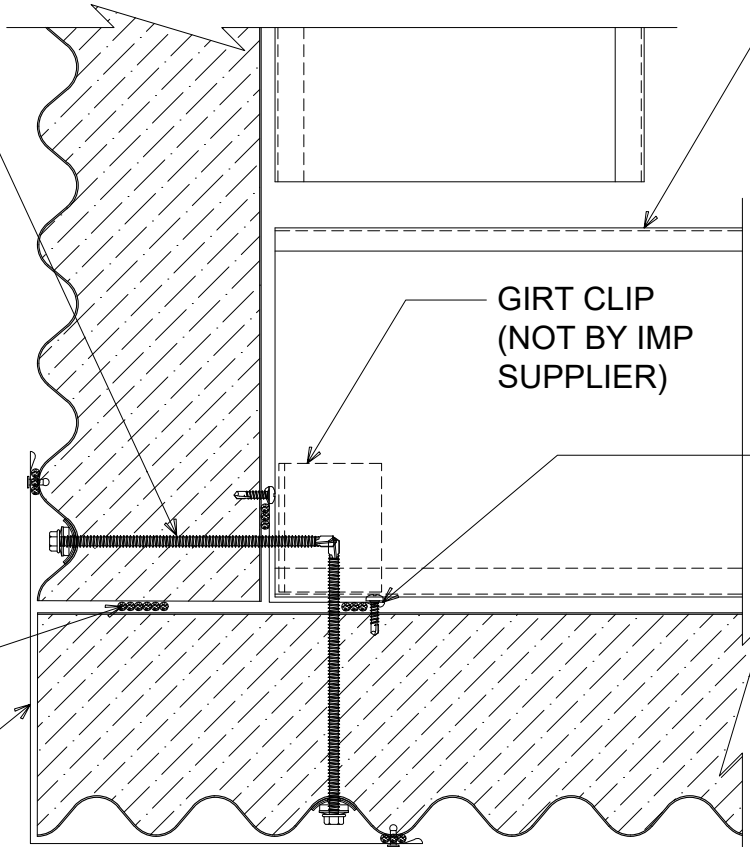
SECONDARY FRAMING (NOT BY IMP SUPPLIER)

GIRT CLIP (NOT BY IMP SUPPLIER)

"IC-01" INSIDE CORNER W/ #10 x 3/4" PPH 12" O/C (SET TRIM IN BUTYL SEALANT)

1/2" DIAMETER BEAD OF BUTYL SEALANT

"OC-03" OUTSIDE CORNER W/ POP RIVETS 12" O/C (SET TRIM IN BUTYL SEALANT)



NOTE: FIELD CUT STARTING PANEL AND ENDING PANEL AS REQUIRED AT CORNER TRANSITION.

# # CORNER TRANSITION - FLAT OUTSIDE

(PLAN VIEW)

DETAIL: CORNER TRANSITION - FLAT OUTSIDE

APPLICATION:  
CW/36 WALL, COMMERCIAL & INDUSTRIAL  
AWIP DETAIL NUMBER:  
CWW-AI-CT-001

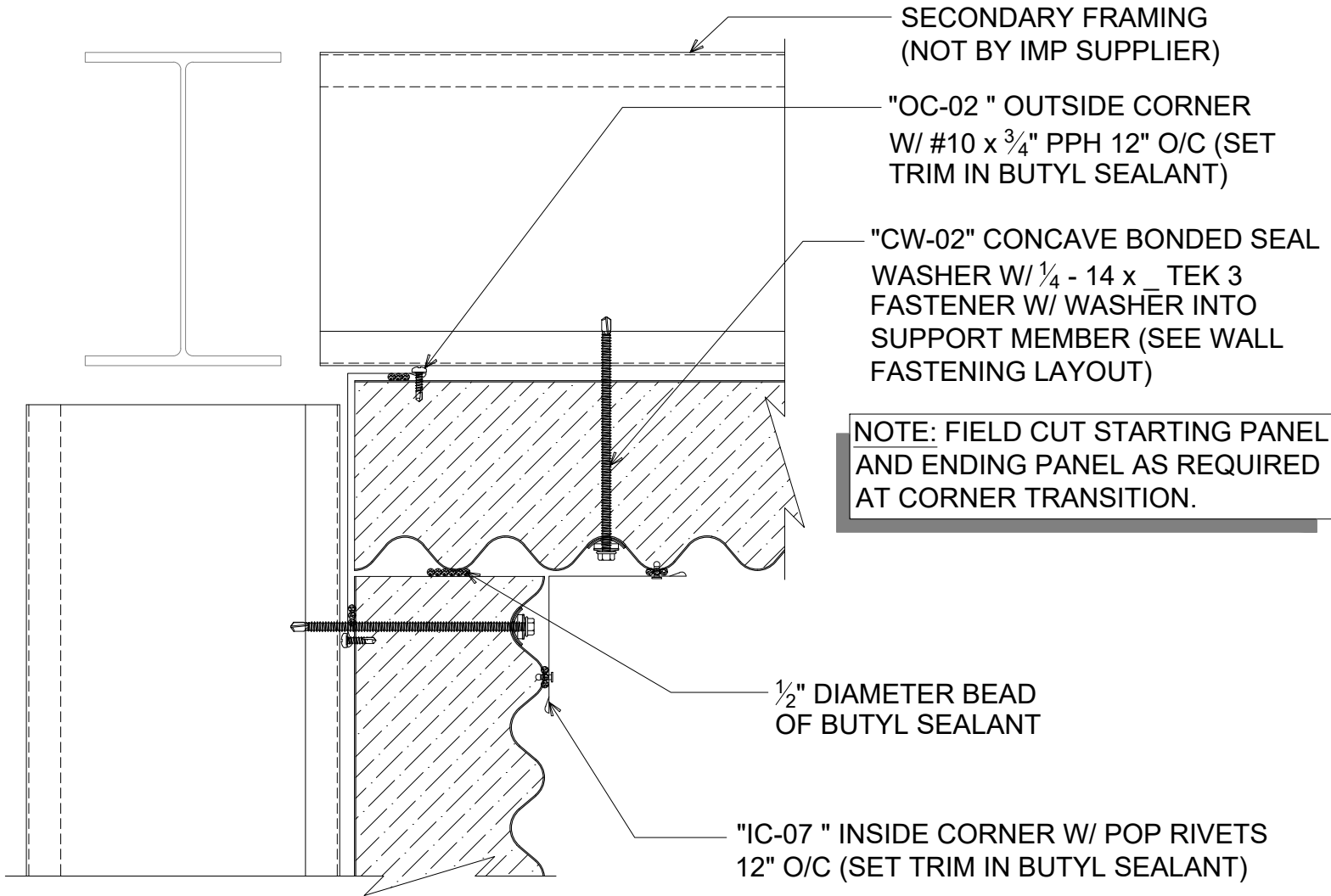
DATE: 08/24/22  
DRAWN BY: MMF

SHEET: 1 OF 1

929 ALDRIDGE ROAD  
VACAVILLE, CA 95688  
TEL: (707) 359-2280  
FAX: (707) 359-2286  
WWW.AWIPANELS.COM

**All Weather**  
Insulated Panels





# # CORNER TRANSITION - FLAT INSIDE

(PLAN VIEW)

DETAIL: CORNER TRANSITION - FLAT INSIDE

APPLICATION:  
CW36 WALL, COMMERCIAL & INDUSTRIAL  
AWIP DETAIL NUMBER:  
CWW-ACI-CT-002

929 ALDRIDGE ROAD  
VACAVILLE, CA 95688  
TEL: (707) 359-2280  
FAX: (707) 359-2286  
WWW.AWIPANELS.COM

**All Weather**  
Insulated Panels



SHEET:  
1 OF 1

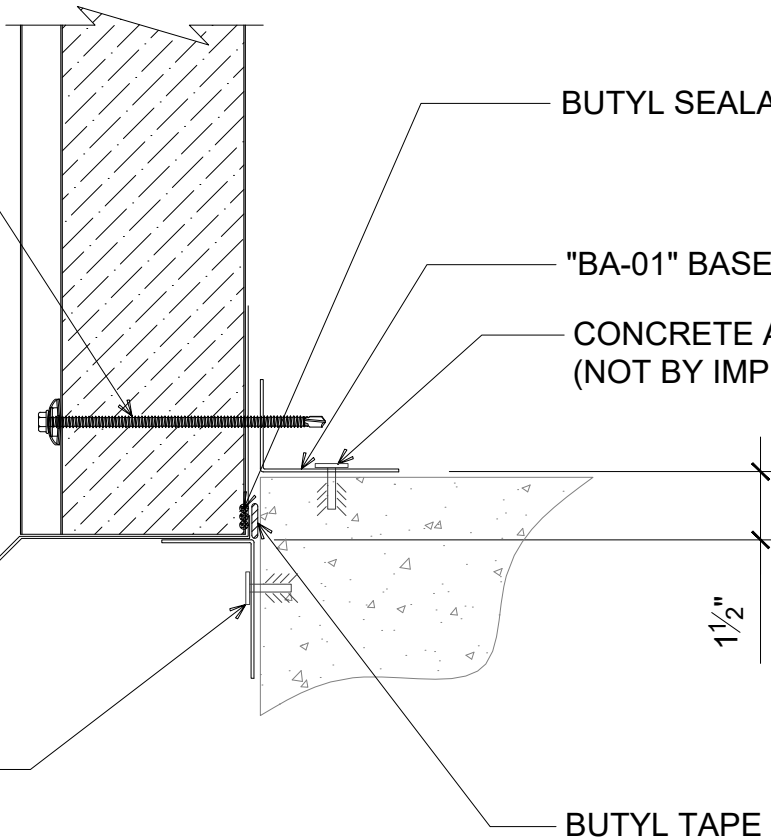
DATE:  
08/24/22  
DRAWN BY:  
MMF

"CW-02" CONCAVE BONDED  
SEAL WASHER W/ 1/4" x 14  
TEK 3 FASTENER W/ WASHER  
INTO SUPPORT MEMBER (SEE  
WALL FASTENING LAYOUT)

NOTE: TREAT RAW/UNPAINTED  
EDGE OF EXPOSED METAL W/  
CLEAR ACRYLIC PAINT TO AVOID  
RUSTING (NOT BY IMP SUPPLIER)

"DF-04" DRIP FLASHING

SUPPORT ANGLE & ALL  
ACCESSORIES BY OTHERS  
(NOT BY IMP SUPPLIER)



BUTYL SEALANT

"BA-01" BASE ANGLE

CONCRETE ANCHORS  
(NOT BY IMP SUPPLIER)

1 1/2"

BUTYL TAPE

# # BASE CONDITION - BYPASS

(SECTION VIEW)

DETAIL:

**BASE CONDITION - BYPASS**

APPLICATION:  
CW36 WALL, COMMERCIAL & INDUSTRIAL

AWIP DETAIL NUMBER:

CWW-ACI-BC-001

929 ALDRIDGE ROAD  
VACAVILLE, CA 95688  
TEL: (707) 359-2280  
FAX: (707) 359-2286  
WWW.AWIPANELS.COM

**All Weather**  
Insulated Panels



SHEET:

DATE:  
08/24/22

DRAWN BY:  
MMF

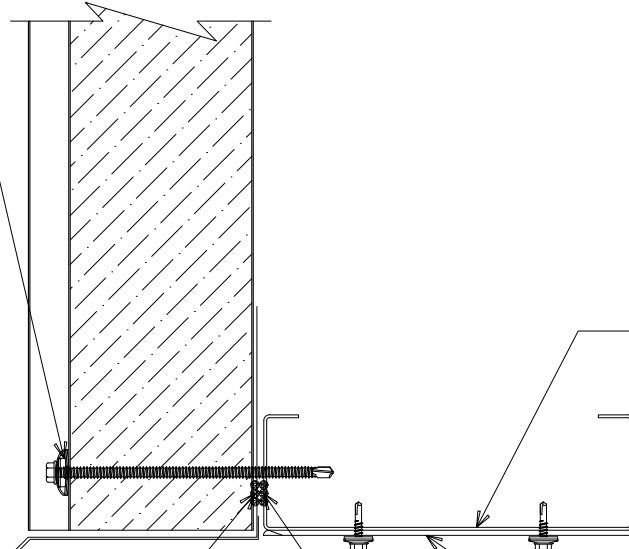
1 OF 1

"CW-02" CONCAVE BONDED SEAL WASHER W/ 1/4 - 14 x 1/2 TEK 3 FASTENER W/ WASHER INTO SUPPORT MEMBER (SEE WALL FASTENING LAYOUT)

NOTE: TREAT RAW/UNPAINTED EDGE OF EXPOSED METAL W/ CLEAR ACRYLIC PAINT TO AVOID RUSTING (NOT BY IMP SUPPLIER)

"DF-04" DRIP FLASHING

SET PANEL IN BUTYL SEALANT



FRAMED OPENING (NOT BY IMP SUPPLIER)

"JT-01" JAMB TRIM W/ (2) 1/4 - 14 x 7/8" STITCH TEK 36" O/C (AT O.H.D. ONLY)

BUTYL SEALANT (OPTIONAL; NOT BY IMP SUPPLIER)

#

## FRAMED OPENING - HEADER

(SECTION VIEW)

DETAIL:

FRAMED OPENING - HEADER

APPLICATION:  
CW/36 WALL, COMMERCIAL & INDUSTRIAL  
AWIP DETAIL NUMBER:  
CWW-ACI-FO-001

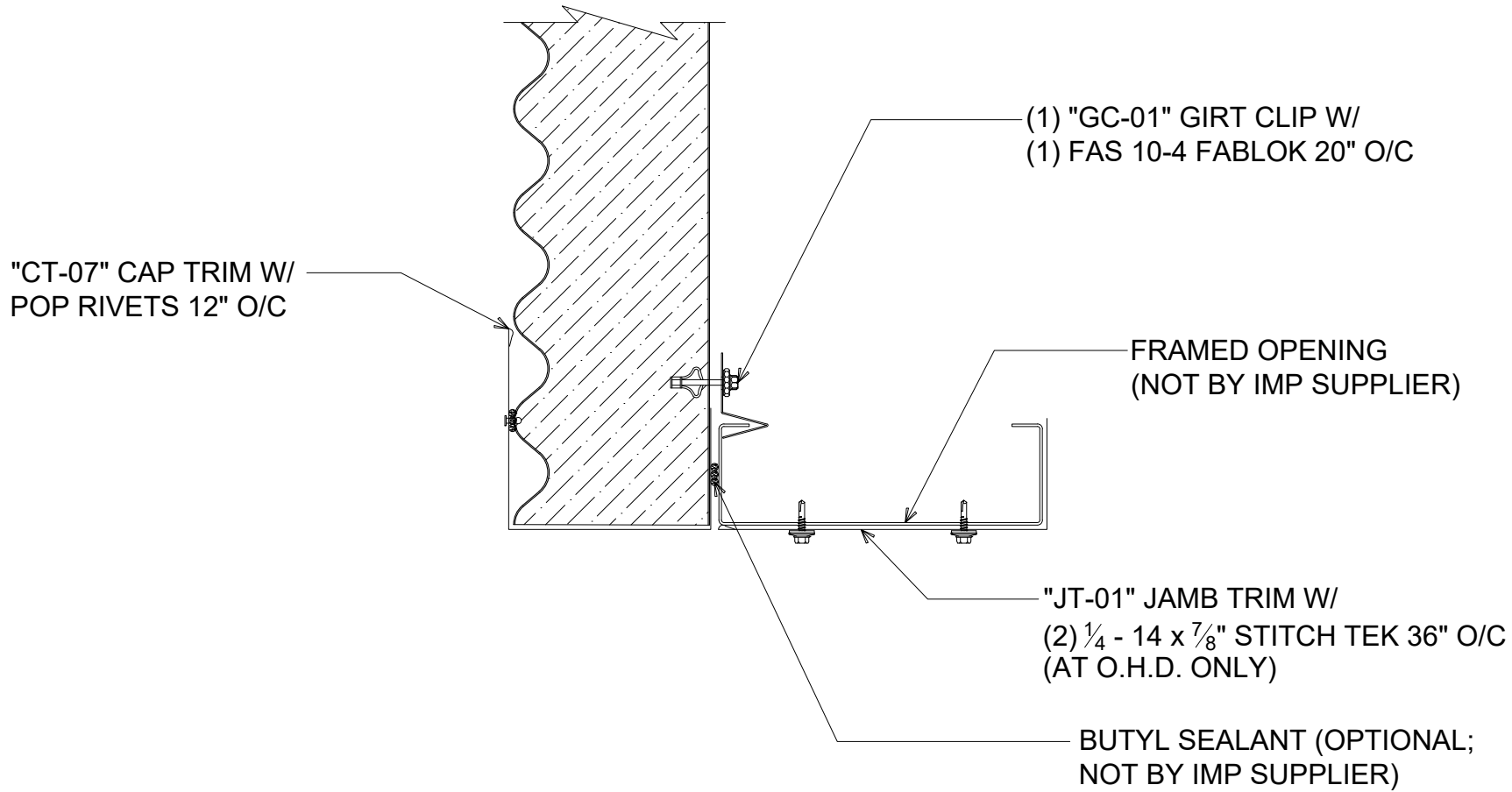
DATE:  
08/24/22  
DRAWN BY:  
MMF

SHEET:  
1  
OF  
1

929 ALDRIDGE ROAD  
VACAVILLE, CA 95688  
TEL: (707) 359-2280  
FAX: (707) 359-2286  
WWW.AWIPANELS.COM

**All Weather**  
Insulated Panels





# # FRAMED OPENING - JAMB

(PLAN VIEW )

DETAIL:

## FRAMED OPENING - JAMB

APPLICATION:  
CW/36 WALL, COMMERCIAL & INDUSTRIAL

AWIP DETAIL NUMBER:

CWM-ACI-FO-002

929 ALDRIDGE ROAD  
VACAVILLE, CA 95688  
TEL: (707) 359-2280  
FAX: (707) 359-2286  
WWW.AWIPANELS.COM



SHEET:

DATE:  
08/24/22

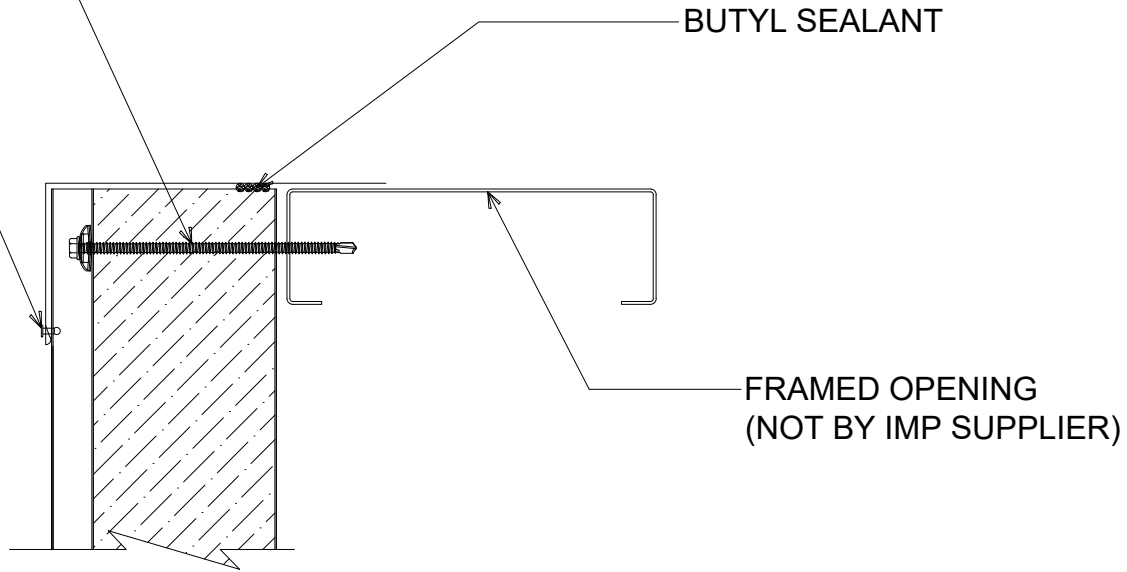
DRAWN BY:  
MMF

1 OF 1



"CW-02" CONCAVE BONDED  
SEAL WASHER W/ 1/4 - 14 x \_  
TEK 3 FASTENER W/ WASHER  
INTO SUPPORT MEMBER (SEE  
WALL FASTENING LAYOUT)

"SF-02" SILL FLASHING W/  
POP RIVETS AT EACH HIGH



#

## FRAMED OPENING - SILL

(SECTION VIEW)

DETAIL:

### FRAMED OPENING - SILL

APPLICATION:  
CW/36 WALL, COMMERCIAL & INDUSTRIAL  
AWIP DETAIL NUMBER:  
CWW-ACI-FO-003

DATE:

08/24/22

SHEET:

DRAWN BY:

MMF

1

OF

1

929 ALDRIDGE ROAD  
VACAVILLE, CA 95688  
TEL: (707) 359-2280  
FAX: (707) 359-2286  
WWW.AWIPANELS.COM

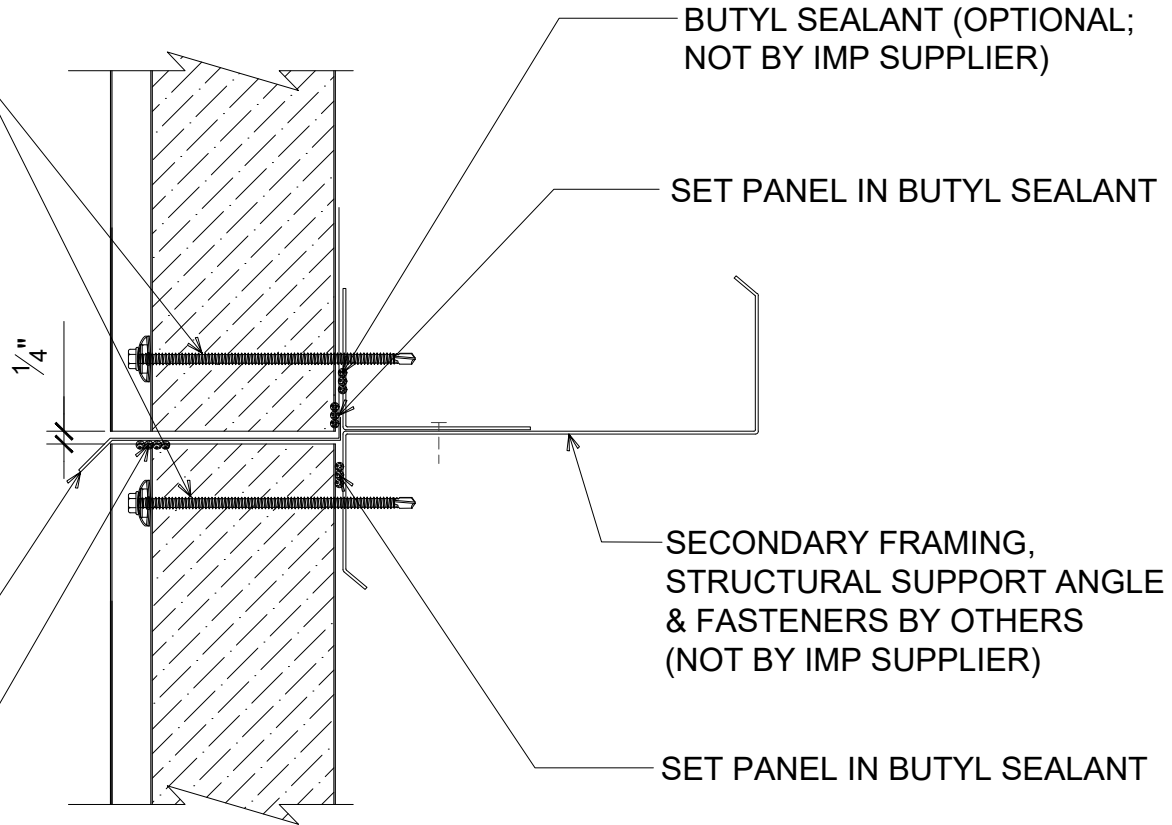


"CW-02" CONCAVE BONDED SEAL WASHER W/ 1/4 - 14 x TEK 3 FASTENER W/ WASHER INTO SUPPORT MEMBER (SEE WALL FASTENING LAYOUT)

NOTE: TREAT RAW/UNPAINTED EDGE OF EXPOSED METAL W/ CLEAR ACRYLIC PAINT TO AVOID RUSTING (NOT BY IMP SUPPLIER)

"DF-04" DRIP FLASHING

BUTYL SEALANT



# # STACK JOINT

(SECTION VIEW)

DETAIL:

## STACK JOINT

APPLICATION:  
CW/36 WALL, COMMERCIAL & INDUSTRIAL  
AWIP DETAIL NUMBER:  
CWW-ACI-SJ-001

DATE:  
08/24/22  
DRAWN BY:  
MMF

SHEET:  
1 OF 1

929 ALDRIDGE ROAD  
VACAVILLE, CA 95688  
TEL: (707) 359-2280  
FAX: (707) 359-2286  
WWW.AWIPANELS.COM

