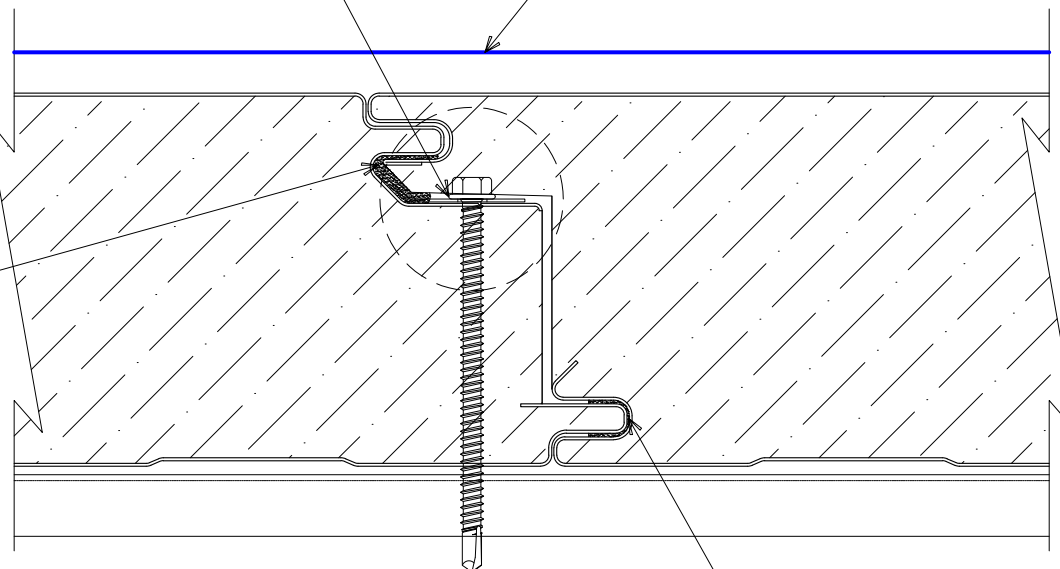


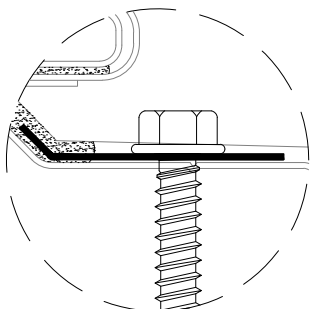
"WC-01" PANEL CLIP W/
 1/4" Ø TEK FASTENERS
 W/O WASHER PER SUPPORT

ONEDEK® THERMOPLASTIC
 ROOF MEMBRANE
 (SEE "ONEDEK® ROOFING MEMBRANE"
 FOR ATTACHMENT OPTIONS)

FACTORY-APPLIED
 NON-SKINNING
 BUTYL SEALANT



FACTORY-APPLIED NON-SKINNING
 BUTYL SEALANT



"WC-01" ORIENTATION

NOTE: FACTORY SEALANT IS APPLIED PRIOR TO THE
 INLINE CUT OFF SAW AND IS NECESSARY TO LEAVE A
 3" TO 5" UNCAULKED SECTION AT PANEL ENDS TO
 AVOID GETTING CAULKING ON SAW BLADE. THESE
 AREAS MUST BE FILLED IN THE FIELD.

RD1 PANEL JOINT (HIDDEN CLIP)

(SECTION VIEW)

DETAIL:

RD1 PANEL JOINT (HIDDEN CLIP)

APPLICATION:
 RD1 ROOF DECK, C&I, COLD-STORAGE, COLD-CLIMATE
 AWIP DETAIL NUMBER:
 RDR-CICSCC-PJ-003

929 ALDRIDGE ROAD
 VACAVILLE, CA 95688
 TEL: (707) 359-2280
 FAX: (707) 359-2286
 WWW.AWIPANELS.COM



DATE:
 02/16/23
 DRAWN BY:
 MMF

SHEET:
 1
 OF
 1