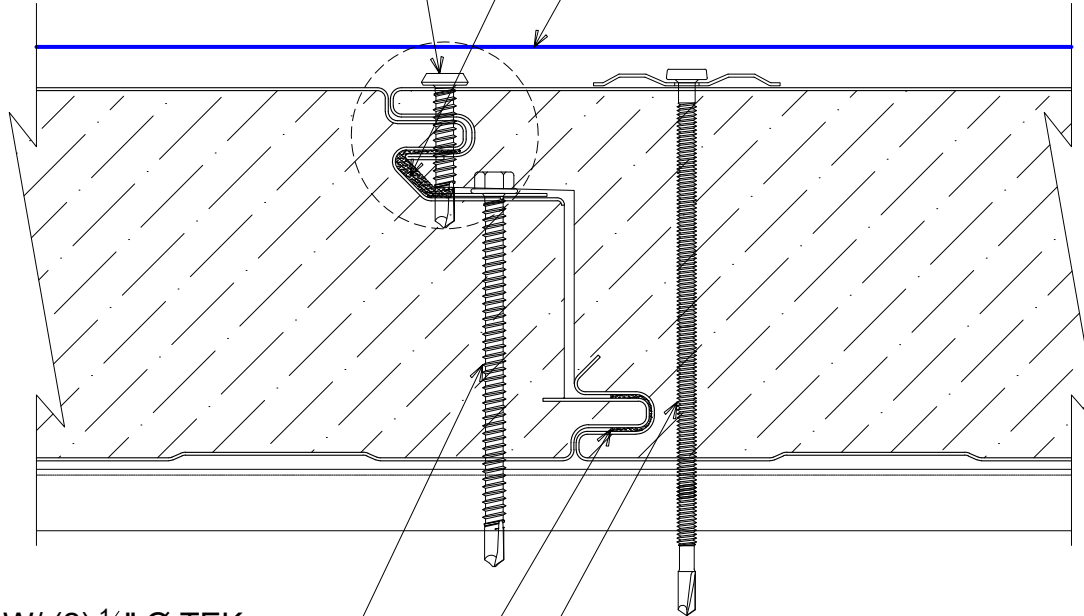
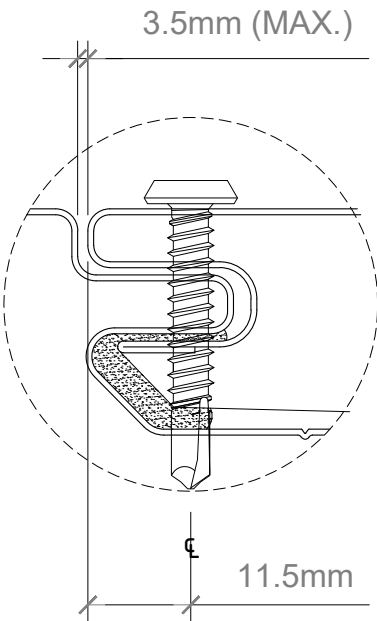


#14 - 13 x 1½" TRUSS HEAD TEK FASTENERS 6" O/C AT JOINERY (ALIGN WITH THROUGH FASTENERS AT THE RAKE)

FACTORY-APPLIED NON-SKINNING BUTYL SEALANT

ONEDEK® THERMOPLASTIC ROOF MEMBRANE (SEE "ONEDEK® ROOFING MEMBRANE" FOR ATTACHMENT OPTIONS)



"WC-01" PANEL CLIP W/ (2) ¼" Ø TEK FASTENERS W/O WASHER PER SUPPORT

FACTORY-APPLIED NON-SKINNING BUTYL SEALANT

#12 - 24 x _" TRUFEST PURLIN FASTENERS W/ "RP-01" ROOF DECK PLATE

NOTE: FACTORY SEALANT IS APPLIED PRIOR TO THE INLINE CUT OFF SAW AND IS NECESSARY TO LEAVE A 3" TO 5" UNCAULKED SECTION AT PANEL ENDS TO AVOID GETTING CAULKING ON SAW BLADE. THESE AREAS MUST BE FILLED IN THE FIELD.

RD1 PANEL JOINT (DIAPHRAGM; 40/7-6)

(SECTION VIEW)

DETAIL: RD1 PANEL JOINT (DIAPHRAGM; 40/7-6)

APPLICATION: RD1 ROOF DECK, C&I, COLD-STORAGE, COLD-CLIMATE
 AWIP DETAIL NUMBER: RDR-CICSCC-PJ-002

DATE: 02/16/23
 DRAWN BY: MMF
 SHEET: 1 OF 1

929 ALDRIDGE ROAD
 VACAVILLE, CA 95688
 TEL: (707) 359-2280
 FAX: (707) 359-2286
 WWW.AWIPANELS.COM

All Weather
 Insulated Panels

