

WOOD NAILER BY OTHERS
(NOT BY ONEDEK® SUPPLIER)

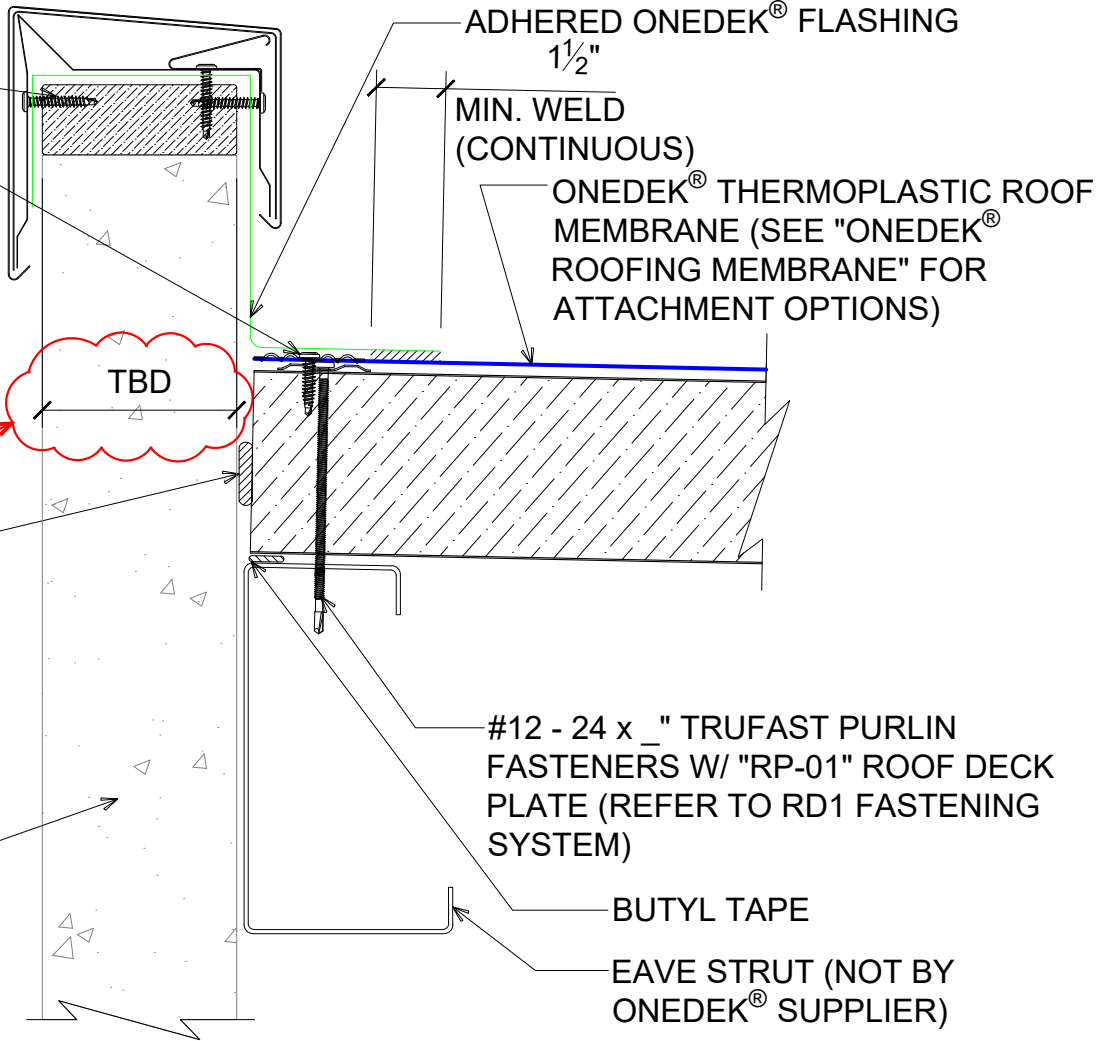
#15 - 13 x 1 1/4" TRUSS HEAD
FASTENERS W/ "RP-02" BARBED
MEMBRANE PLATE 6" O/C

NOTE: REFER TO DETAIL _E FOR
EDGE METAL ASSEMBLY
INFORMATION.

VERIFY

FILL VOID WITH ONE-PART
EXPANDING FOAM SEALANT
(NOT BY ONEDEK® SUPPLIER)

WALL SYSTEM BY OTHERS
(NOT BY ONEDEK® SUPPLIER)



BASE FLASHING AT PARAPET W/ METAL COPING (HIGH EAVE)

(SECTION VIEW)



DETAIL: **PARAPET W/ METAL COPING (HIGH EAVE)**

929 ALDRIDGE ROAD
VACAVILLE, CA 95688
TEL: (707) 359-2280
FAX: (707) 359-2286
WWW.AWIPANELS.COM

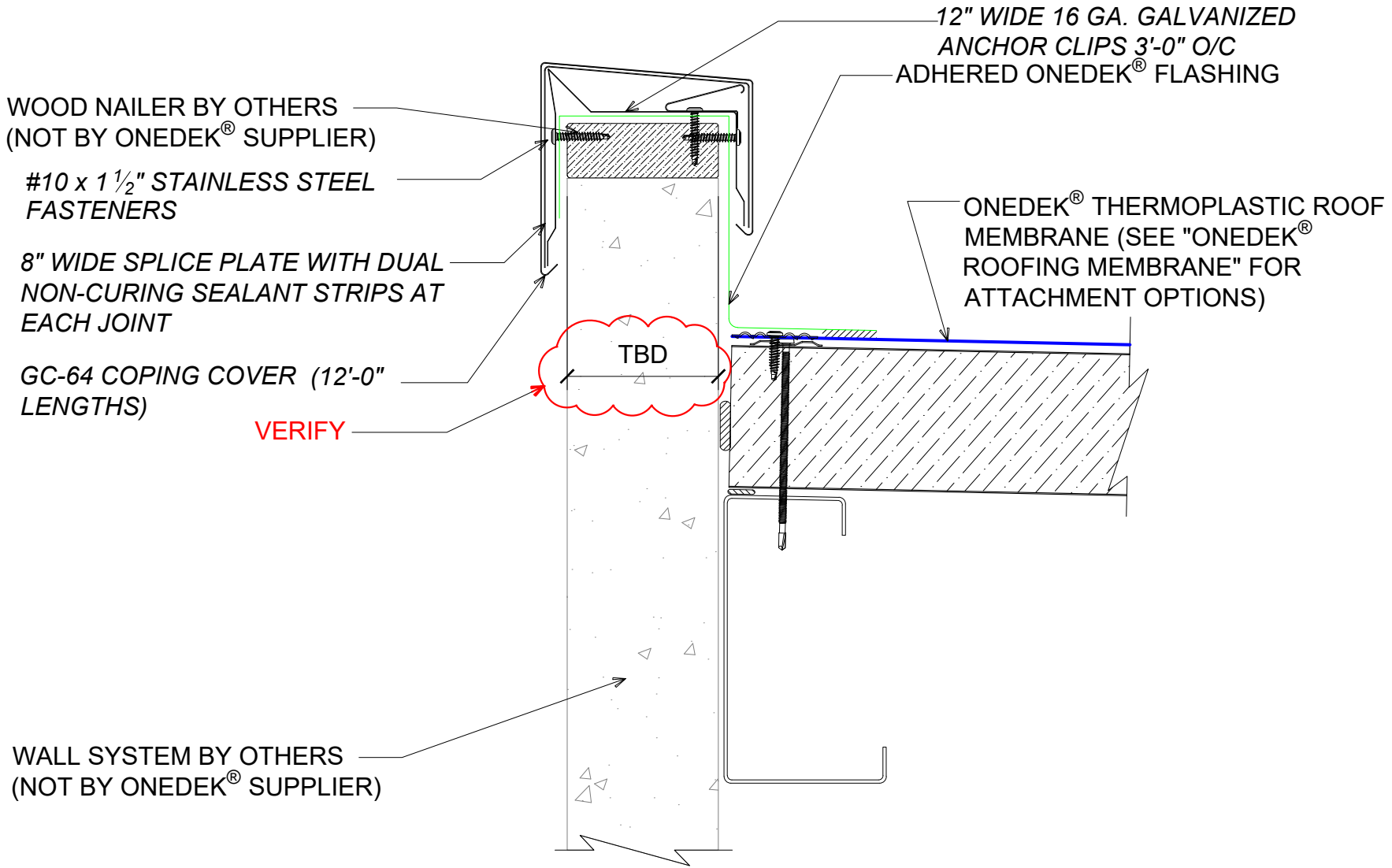
All Weather
Insulated Panels



APPLICATION:
RD1 ROOF DECK, COMMERCIAL & INDUSTRIAL, COLD-STORAGE
AWIP DETAIL NUMBER:

DATE: 02/07/23
DRAWN BY: MMF

SHEET: 1 OF 1



#E BASE FLASHING AT PARAPET W/ METAL COPING (HIGH EAVE)

(SECTION VIEW)

DETAIL: **PARAPET W/ METAL COPING (HIGH EAVE), GC-64**

929 ALDRIDGE ROAD
 VACAVILLE, CA 95688
 TEL: (707) 359-2280
 FAX: (707) 359-2286
 WWW.AWIPANELS.COM

All Weather
 Insulated Panels



APPLICATION:
 RD1 ROOF DECK, COMMERCIAL & INDUSTRIAL, COLD-STORAGE
 AWIP DETAIL NUMBER:
 RDR-CICS-WBO-009

DATE:
 02/07/23

DRAWN BY:
 MMF

SHEET:
 1 OF 1