

WOOD NAILER BY OTHERS
(NOT BY ONEDEK® SUPPLIER)

NOTE: REFER TO DETAIL _E FOR
EDGE METAL ASSEMBLY
INFORMATION.

ADHERED ONEDEK® FLASHING

FILL VOID WITH ONE-PART
EXPANDING FOAM SEALANT
(NOT BY ONEDEK® SUPPLIER)

WALL SYSTEM BY OTHERS
(NOT BY ONEDEK® SUPPLIER)

SCUPPER AND DRAINAGE SYSTEM BY
OTHERS (NOT BY ONEDEK® SUPPLIER)
1 1/2"

MIN. WELD
(CONTINUOUS)

ONEDEK® THERMOPLASTIC ROOF
MEMBRANE (SEE "ONEDEK®
ROOFING MEMBRANE" FOR
ATTACHMENT OPTIONS)

#15 - 13 x 1 1/4" TRUSS HEAD
FASTENERS W/ "RP-02" BARBED
MEMBRANE PLATE 6" O/C

#12 - 24 x _" TRUFast PURLIN
FASTENERS W/ "RP-01" ROOF DECK
PLATE (REFER TO RD1 FASTENING
SYSTEM)

BUTYL TAPE

EAVE STRUT (NOT BY
ONEDEK® SUPPLIER)

PARAPET W/ EDGE METAL (EAVE)

(SECTION VIEW)

DETAIL:

PARAPET W/ EDGE METAL (EAVE)

929 ALDRIDGE ROAD
VACAVILLE, CA 95688
TEL: (707) 359-2280
FAX: (707) 359-2286
WWW.AWIPANELS.COM

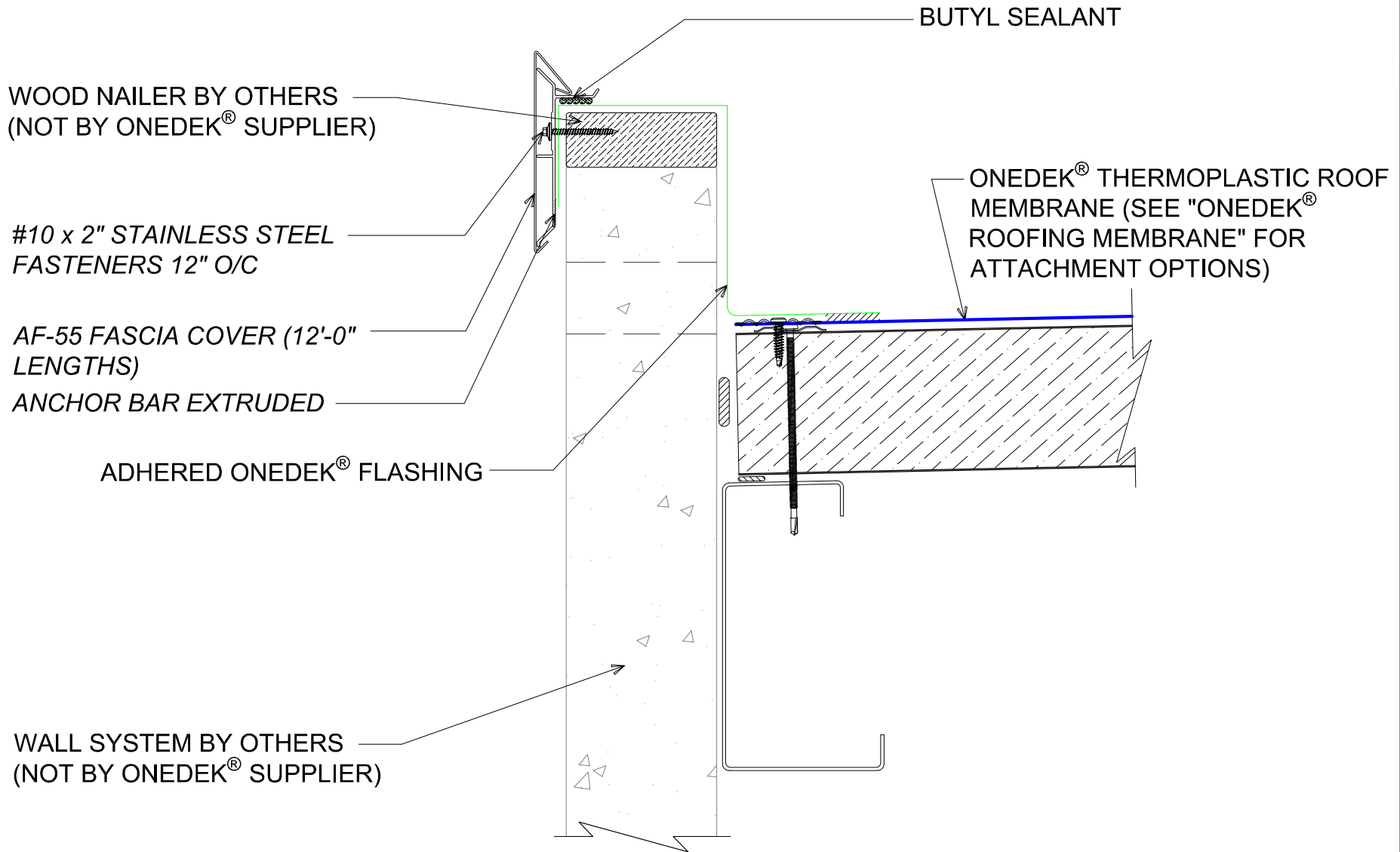
All Weather
Insulated Panels



APPLICATION:
RD1 ROOF DECK, COMMERCIAL & INDUSTRIAL, COLD-STORAGE
AWIP DETAIL NUMBER:
RDR-CICS-WBO-007

DATE:
11/07/22

SHEET:
DRAWN BY:
MMF
1
OF
1



#E PARAPET W/ EDGE METAL (EAVE)

(SECTION VIEW)

DETAIL:

PARAPET W/ EDGE METAL (EAVE), AF-55

APPLICATION:

RD1 ROOF DECK, COMMERCIAL & INDUSTRIAL, COLD-STORAGE

AWIP DETAIL NUMBER:

RDR-CICS-WBO-007

DATE:

11/07/22

DRAWN BY:

MMF

SHEET:

1

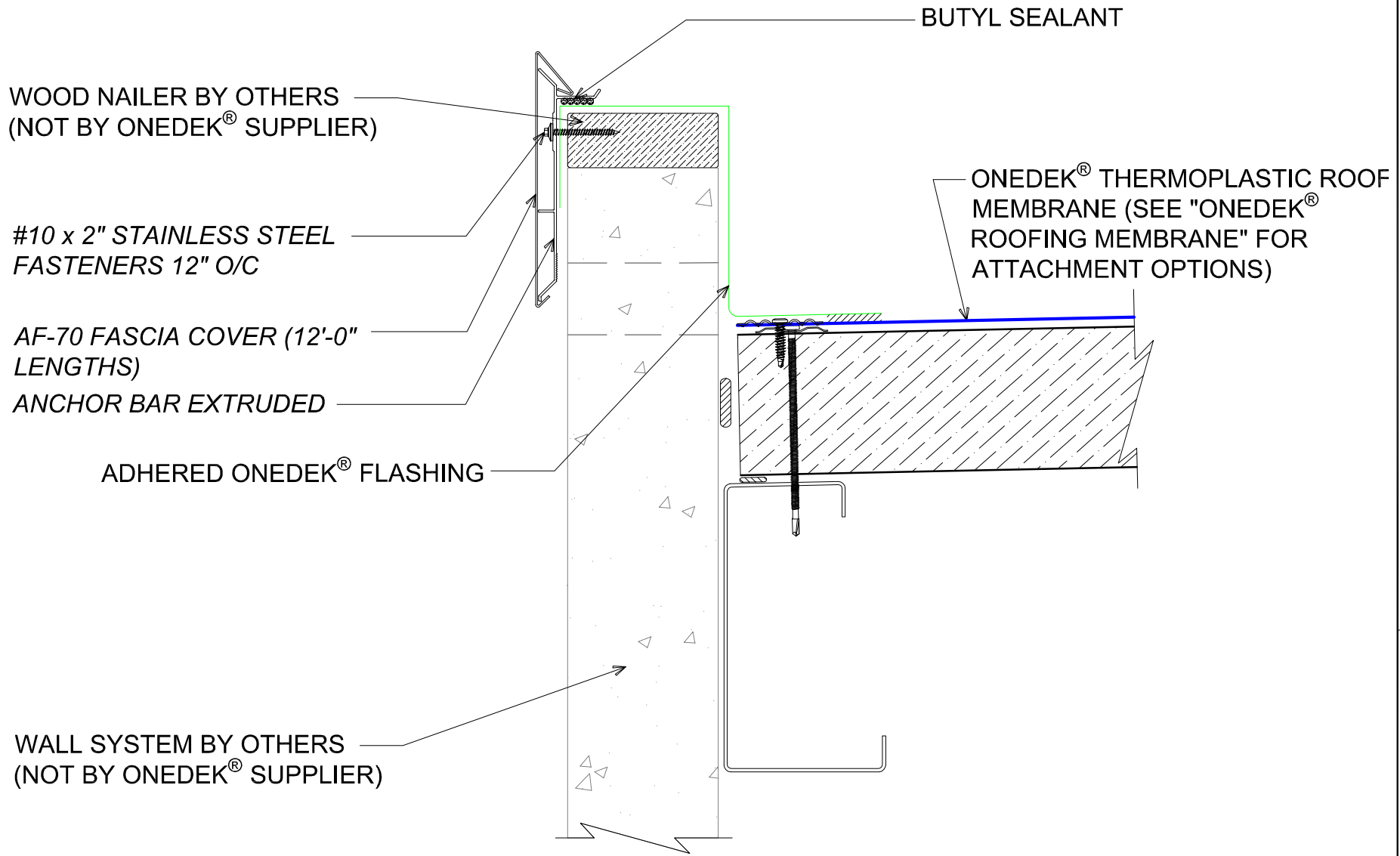
OF

1

929 ALDRIDGE ROAD
VACAVILLE, CA 95688
TEL: (707) 359-2280
FAX: (707) 359-2286
WWW.AWIPANELS.COM

All Weather
Insulated Panels





#E PARAPET W/ EDGE METAL (EAVE)

(SECTION VIEW)

DETAIL: **PARAPET W/ EDGE METAL (EAVE), AF-70**

929 ALDRIDGE ROAD
 VACAVILLE, CA 95688
 TEL: (707) 359-2280
 FAX: (707) 359-2286
 WWW.AWIPANELS.COM



APPLICATION:
 RD1 ROOF DECK, COMMERCIAL & INDUSTRIAL, COLD-STORAGE
 AWIP DETAIL NUMBER:
 RDR-CICS-WBO-007

DATE: 11/07/22
 DRAWN BY: MMF

SHEET: 1 OF 1