

NOTE: REFER TO DETAIL \_E FOR  
EDGE METAL ASSEMBLY  
INFORMATION.

WOOD NAILER BY OTHERS  
(NOT BY ONEDEK® SUPPLIER)

FILL VOID WITH ONE-PART  
EXPANDING FOAM SEALANT

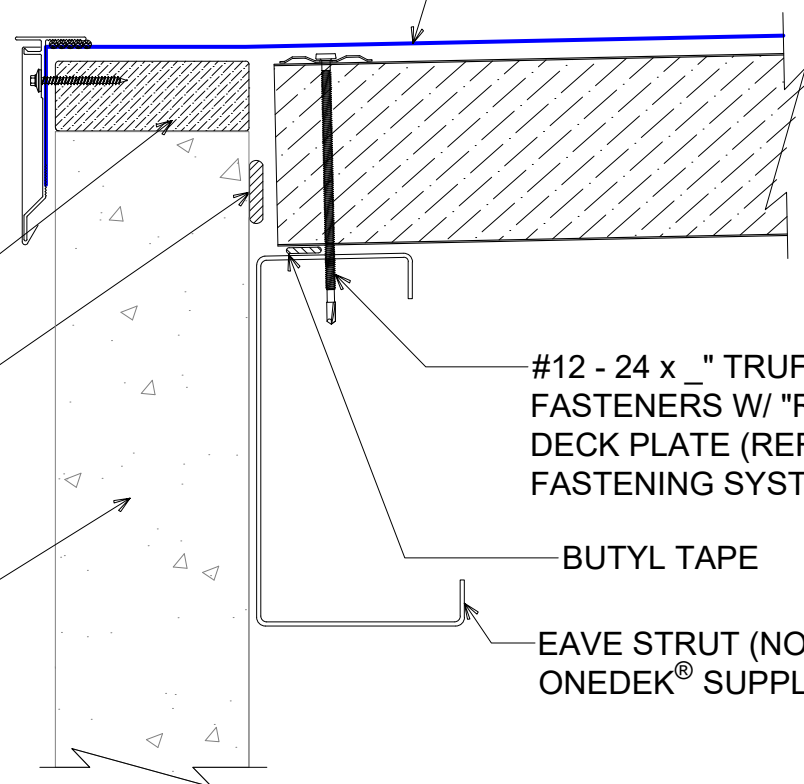
WALL SYSTEM BY OTHERS  
(NOT BY ONEDEK® SUPPLIER)

ONEDEK® THERMOPLASTIC  
ROOF MEMBRANE  
(SEE "ONEDEK® ROOFING  
MEMBRANE" FOR  
ATTACHMENT OPTIONS)

#12 - 24 x \_" TRUFEST PURLIN  
FASTENERS W/ "RP-01" ROOF  
DECK PLATE (REFER TO RD1  
FASTENING SYSTEM)

BUTYL TAPE

EAVE STRUT (NOT BY  
ONEDEK® SUPPLIER)



# # DRAINING PERIMETER EDGE METAL (GUTTERLESS EAVE)

(SECTION VIEW)



DETAIL:

<b>DRAINING PERIMETER EDGE METAL (GUTTERLESS EAVE)</b>		DATE:	02/07/23	SHEET:	1	OF	1
APPLICATION: RD1 ROOF DECK, COMMERCIAL & INDUSTRIAL, COLD-STORAGE		DRAWN BY:	MMF				
AWIP DETAIL NUMBER: RDR-CJCS-WBO-005							

929 ALDRIDGE ROAD  
VACAVILLE, CA 95688  
TEL: (707) 359-2280  
FAX: (707) 359-2286  
WWW.AWIPANELS.COM



ANCHOR BAR EXTRUDED

AFDE-45 DRIP EDGE COVER (12'-0"  
LENGTHS)

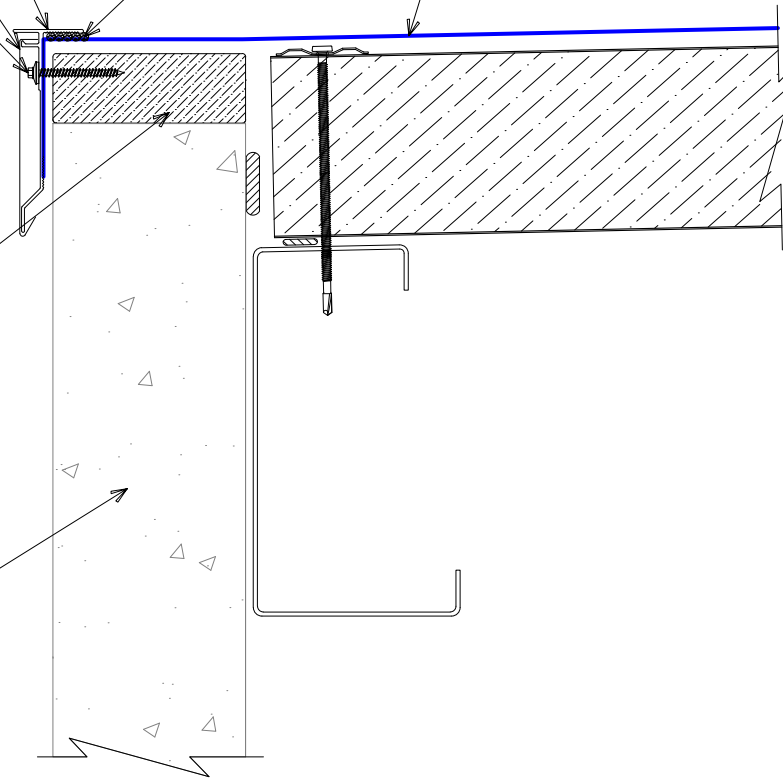
#10 x 2" STAINLESS STEEL  
FASTENERS 12" O/C

WOOD NAILER BY OTHERS  
(NOT BY ONEDEK® SUPPLIER)

WALL SYSTEM BY OTHERS  
(NOT BY ONEDEK® SUPPLIER)

BUTYL SEALANT

ONEDEK® THERMOPLASTIC  
ROOF MEMBRANE  
(SEE "ONEDEK® ROOFING  
MEMBRANE" FOR  
ATTACHMENT OPTIONS)



# #E DRAINING PERIMETER EDGE METAL (GUTTERLESS EAVE)

(SECTION VIEW)

DETAIL:

DRAINING PERIMETER EDGE (GUTTERLESS EAVE), AFDE-45

APPLICATION:	DATE:	SHEET:
RD1 ROOF DECK, COMMERCIAL & INDUSTRIAL, COLD-STORAGE	02/07/23	1
AWIP DETAIL NUMBER:	DRAWN BY:	OF 1
RDR-C/ICS-WBO-005	MMF	

929 ALDRIDGE ROAD  
VACAVILLE, CA 95688  
TEL: (707) 359-2280  
FAX: (707) 359-2286  
WWW.AWIPANELS.COM



ANCHOR BAR EXTRUDED

AFDE-60 DRIP EDGE COVER (12'-0"  
LENGTHS)

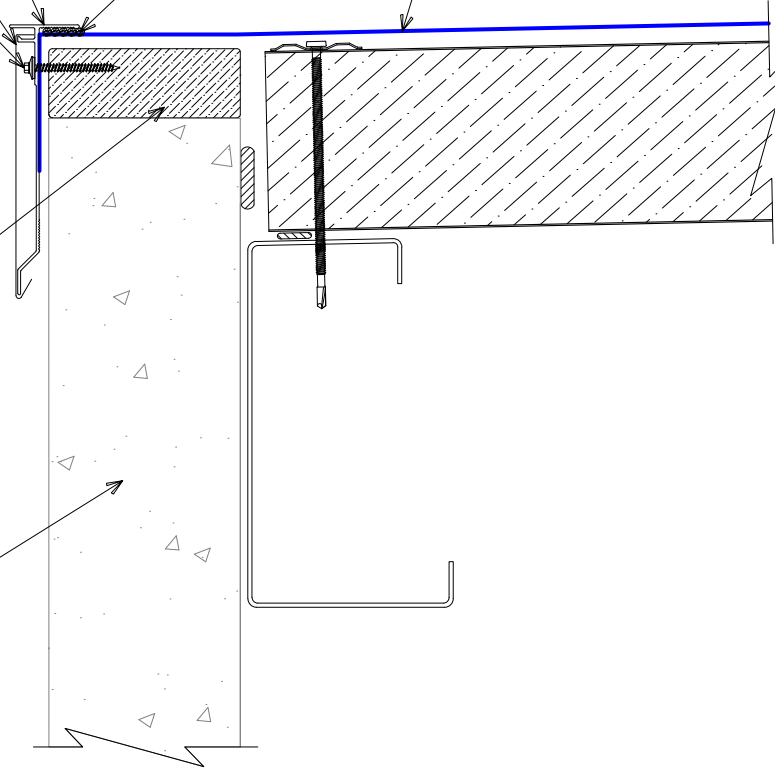
#10 x 2" STAINLESS STEEL  
FASTENERS 12" O/C

BUTYL SEALANT

ONEDEK® THERMOPLASTIC  
ROOF MEMBRANE  
(SEE "ONEDEK® ROOFING  
MEMBRANE" FOR  
ATTACHMENT OPTIONS)

WOOD NAILER BY OTHERS  
(NOT BY ONEDEK® SUPPLIER)

WALL SYSTEM BY OTHERS  
(NOT BY ONEDEK® SUPPLIER)



# #E DRAINING PERIMETER EDGE METAL (GUTTERLESS EAVE)

(SECTION VIEW)

DETAIL:

DRAINING PERIMETER EDGE (GUTTERLESS EAVE), AFDE-60

APPLICATION:

RD1 ROOF DECK, COMMERCIAL & INDUSTRIAL, COLD-STORAGE

AWIP DETAIL NUMBER:

RDR-C/ICS-WBO-005

DATE:

02/07/23

DRAWN BY:

MMF

SHEET:

1

OF 1

929 ALDRIDGE ROAD  
VACAVILLE, CA 95688  
TEL: (707) 359-2280  
FAX: (707) 359-2286  
WWW.AWIPANELS.COM

**All Weather**  
Insulated Panels



ANCHOR BAR EXTRUDED

AFDE-75 DRIP EDGE COVER (12'-0"  
LENGTHS)

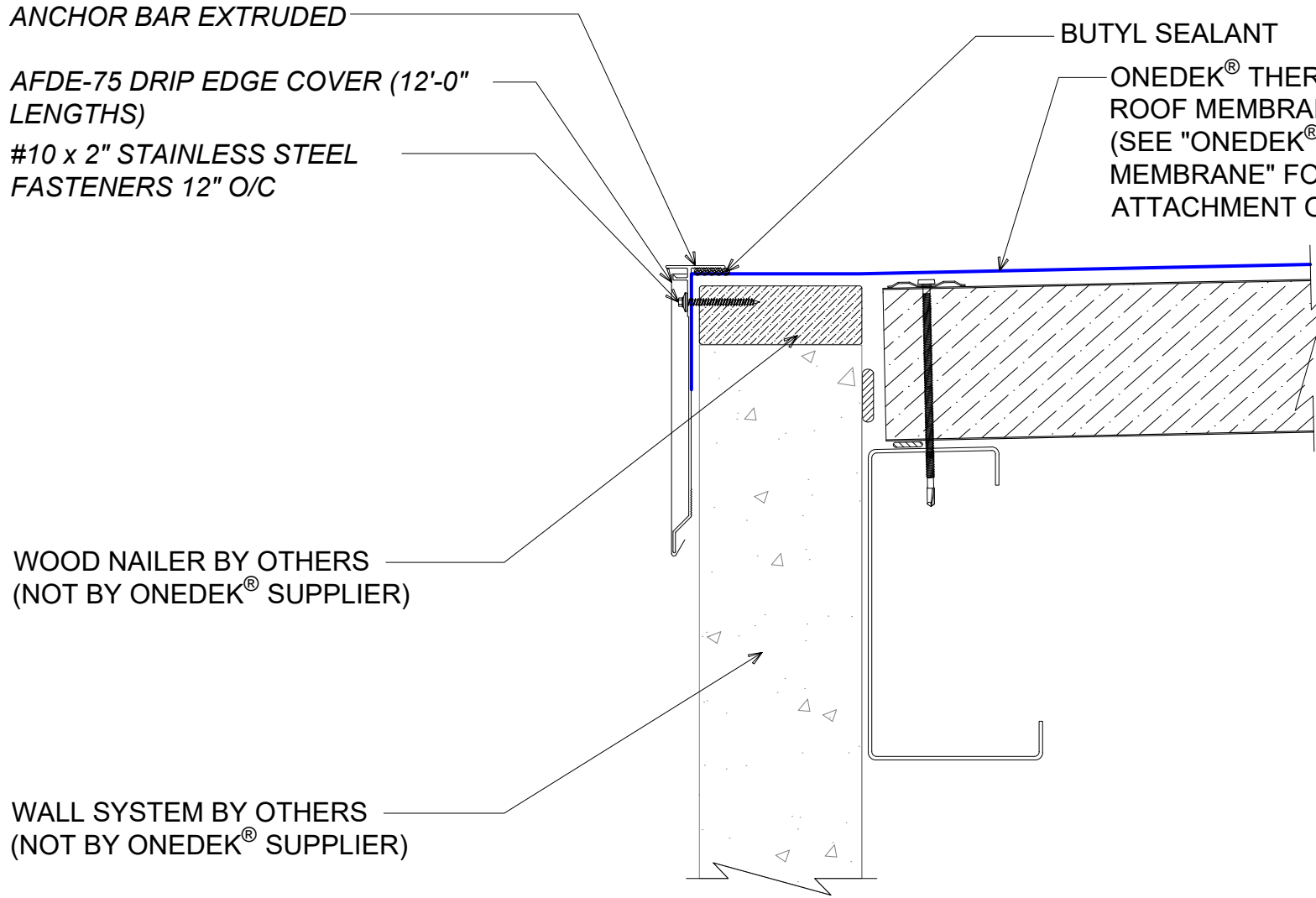
#10 x 2" STAINLESS STEEL  
FASTENERS 12" O/C

WOOD NAILER BY OTHERS  
(NOT BY ONEDEK® SUPPLIER)

WALL SYSTEM BY OTHERS  
(NOT BY ONEDEK® SUPPLIER)

BUTYL SEALANT

ONEDEK® THERMOPLASTIC  
ROOF MEMBRANE  
(SEE "ONEDEK® ROOFING  
MEMBRANE" FOR  
ATTACHMENT OPTIONS)



# #E DRAINING PERIMETER EDGE METAL (GUTTERLESS EAVE)

(SECTION VIEW)

DETAIL:

DRAINING PERIMETER EDGE (GUTTERLESS EAVE), AFDE-75

APPLICATION:

RD1 ROOF DECK, COMMERCIAL & INDUSTRIAL, COLD-STORAGE

AWIP DETAIL NUMBER:

RDR-CICS-WBO-005

DATE:

02/07/23

DRAWN BY:

MMF

SHEET:

1

OF

1

929 ALDRIDGE ROAD  
VACAVILLE, CA 95688  
TEL: (707) 359-2280  
FAX: (707) 359-2286  
WWW.AWIPANELS.COM

**All Weather**  
Insulated Panels

