

"BC-02" 20 GA CHANNEL CAP W/
 #14 - 13 x 1½" TRUSS HEAD TEK
 FASTENERS 12" O/C. W/ BUTYL
 SEALANT AT FLANGES (MARRY TO
 VERTICAL SEALANT)

#15 - 13 x 1¼" TRUSS HEAD
 FASTENERS W/ "RP-02" BARBED
 MEMBRANE PLATE 6" O/C

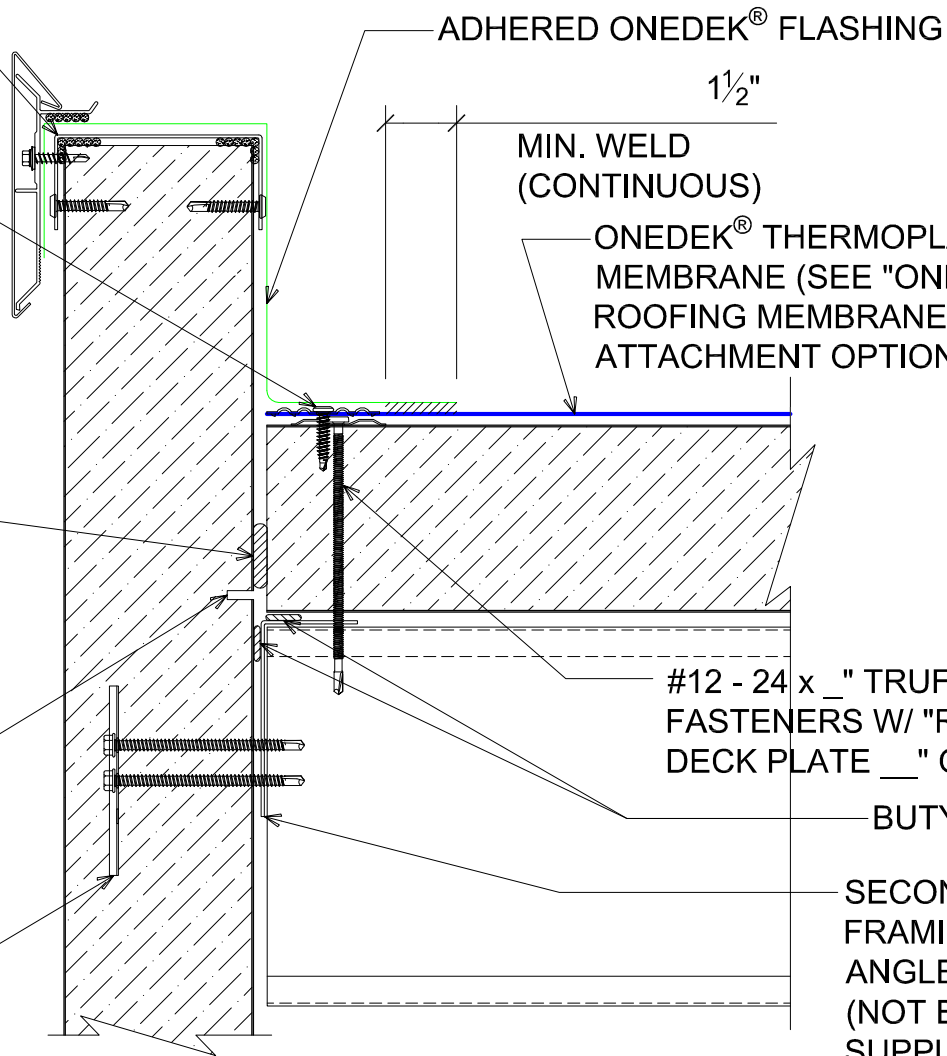
NOTE: REFER TO DETAIL _E FOR
 EDGE METAL ASSEMBLY
 INFORMATION.

FILL VOID WITH ONE-PART
 EXPANDING FOAM SEALANT

NOTE: BUTYL SEALANT AT WALL
 JOINERY NOT SHOWN FOR CLARITY.
 ENSURE ALL SEALANTS MARRY TO
 CREATE A THERMAL ENVELOPE.

CONTINUOUS THERMAL
 CUT FOR COLD STORAGE
 APPLICATIONS

"WC-01" PANEL CLIP W/
 () ¼ - 14 x _ TEK 3 FASTENERS
 W/O WASHER AT PANEL JOINT



MIN. WELD
 (CONTINUOUS)

ONEDEK® THERMOPLASTIC ROOF
 MEMBRANE (SEE "ONEDEK®
 ROOFING MEMBRANE" FOR
 ATTACHMENT OPTIONS)

#12 - 24 x _" TRUFAST PURLIN
 FASTENERS W/ "RP-01" ROOF
 DECK PLATE _" O/C

BUTYL TAPE

SECONDARY
 FRAMING & RAKE
 ANGLE BY OTHERS
 (NOT BY ONEDEK®
 SUPPLIER)

PARAPET W/ EDGE METAL (RAKE)

(SECTION VIEW)

DETAIL: PARAPET W/ EDGE METAL (RAKE)

929 ALDRIDGE ROAD
 VACAVILLE, CA 95688
 TEL: (707) 359-2280
 FAX: (707) 359-2286
 WWW.AWIPANELS.COM

All Weather
 Insulated Panels



APPLICATION: RD1 ROOF DECK, COMMERCIAL & INDUSTRIAL, COLD-STORAGE
 AWIP DETAIL NUMBER: RDR-CJCS-RW-005

DATE: 11/07/22
 SHEET: 1 OF 1
 DRAWN BY: MMF

"BC-02" 20 GA CHANNEL CAP W/
#14 - 13 x 1 1/2" TRUSS HEAD TEK
FASTENERS 12" O/C. W/ BUTYL
SEALANT AT FLANGES (MARRY TO
VERTICAL SEALANT)

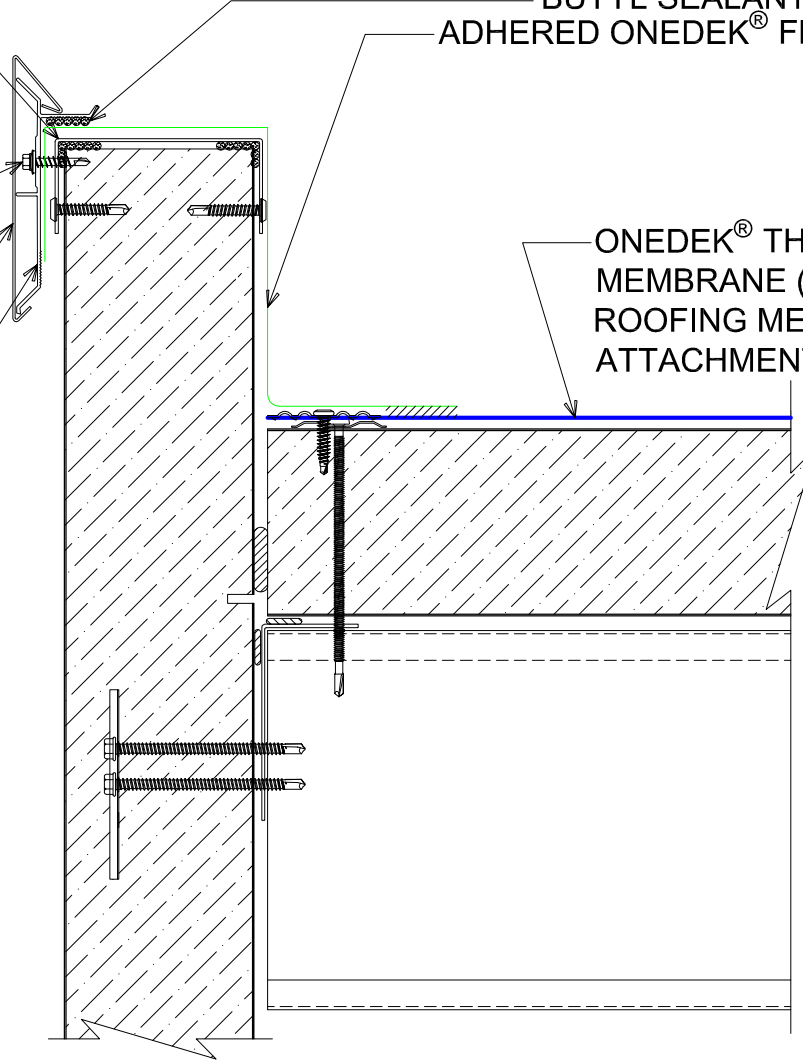
#12-14 x 1 1/4" HWH/BD TEK 2
STAINLESS STEEL FASTENERS
12" O/C

AF-55 FASCIA COVER (12'-0"
LENGTHS)

ANCHOR BAR EXTRUDED

BUTYL SEALANT
ADHERED ONEDEK® FLASHING

ONEDEK® THERMOPLASTIC ROOF
MEMBRANE (SEE "ONEDEK®
ROOFING MEMBRANE" FOR
ATTACHMENT OPTIONS)



#E PARAPET W/ EDGE METAL (RAKE)

(SECTION VIEW)

DETAIL:

PARAPET W/ EDGE METAL (RAKE), AF-55

APPLICATION:
RD1 ROOF DECK, COMMERCIAL & INDUSTRIAL, COLD-STORAGE
AWIP DETAIL NUMBER:
RDR-CICS-RW-005

DATE:
11/07/22
DRAWN BY:
MMF

SHEET:
1
OF
1

929 ALDRIDGE ROAD
VACAVILLE, CA 95688
TEL: (707) 359-2280
FAX: (707) 359-2286
WWW.AWIPANELS.COM



"BC-02" 20 GA CHANNEL CAP W/
 #14 - 13 x 1½" TRUSS HEAD TEK
 FASTENERS 12" O/C. W/ BUTYL
 SEALANT AT FLANGES (MARRY TO
 VERTICAL SEALANT)

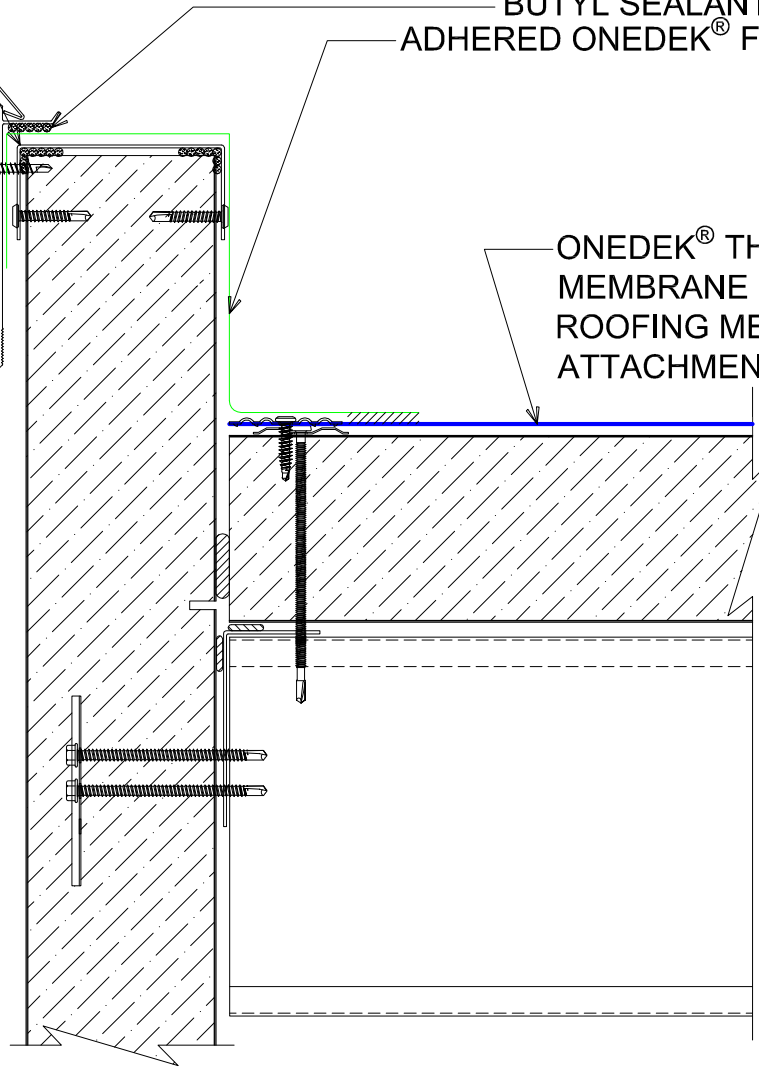
#12-14 x 1¼" HWH/BD TEK 2
 STAINLESS STEEL FASTENERS
 12" O/C

AF-70 FASCIA COVER (12'-0"
 LENGTHS)

ANCHOR BAR EXTRUDED

BUTYL SEALANT
 ADHERED ONEDEK® FLASHING

ONEDEK® THERMOPLASTIC ROOF
 MEMBRANE (SEE "ONEDEK®
 ROOFING MEMBRANE" FOR
 ATTACHMENT OPTIONS)



#E PARAPET W/ EDGE METAL (RAKE)

(SECTION VIEW)

DETAIL: PARAPET W/ EDGE METAL (RAKE), AF-70

DATE:	11/07/22	SHEET:	1	OF	1
DRAWN BY:	MMF				

APPLICATION:
 RD1 ROOF DECK, COMMERCIAL & INDUSTRIAL, COLD-STORAGE
 A/W/P DETAIL NUMBER:
 RDR-CICS-RW-005

929 ALDRIDGE ROAD
 VACAVILLE, CA 95688
 TEL: (707) 359-2280
 FAX: (707) 359-2286
 WWW.AWIPANELS.COM

