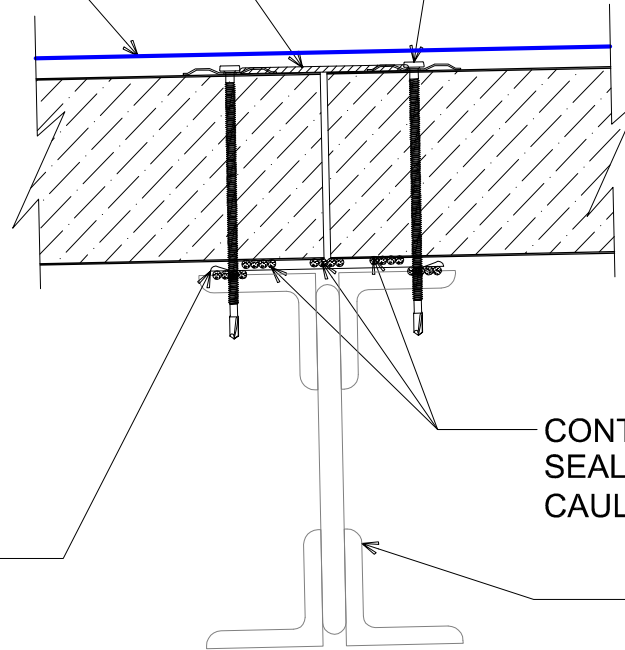


6" WIDE CONTINUOUS 5.5 MIL FSK FACING TAPE AT END JOINTS

ONEDEK® THERMOPLASTIC ROOF MEMBRANE (SEE "ONEDEK® ROOFING MEMBRANE" FOR ATTACHMENT OPTIONS)

#12 - 24 x _" TRUFEST PURLIN FASTENERS W/ "RP-01" ROOF DECK PLATE (REFER TO RD1 FASTENING SYSTEM)



"JC-01" JOINT COVER (SET TRIM IN BUTYL SEALANT)

CONTINUOUS 1/2" Ø BEAD OF BUTYL SEALANT (CONNECT ENDS OF CAULK BEADS TO CLOSE AND BOX)

SECONDARY FRAMING (NOT BY ONEDEK® SUPPLIER)

BUTT JOINT DETAIL - JOIST

(SECTION VIEW)

DETAIL:

BUTT JOINT - JOIST

APPLICATION:

RD1 ROOF DECK, COMMERCIAL & INDUSTRIAL, COLD-STORAGE

AWIP DETAIL NUMBER:

RDR-CJCS-PT-003

DATE:

11/30/22

DRAWN BY:

MMF

SHEET:

1

OF

1

929 ALDRIDGE ROAD
VACAVILLE, CA 95688
TEL: (707) 359-2280
FAX: (707) 359-2286
WWW.AWIPANELS.COM

