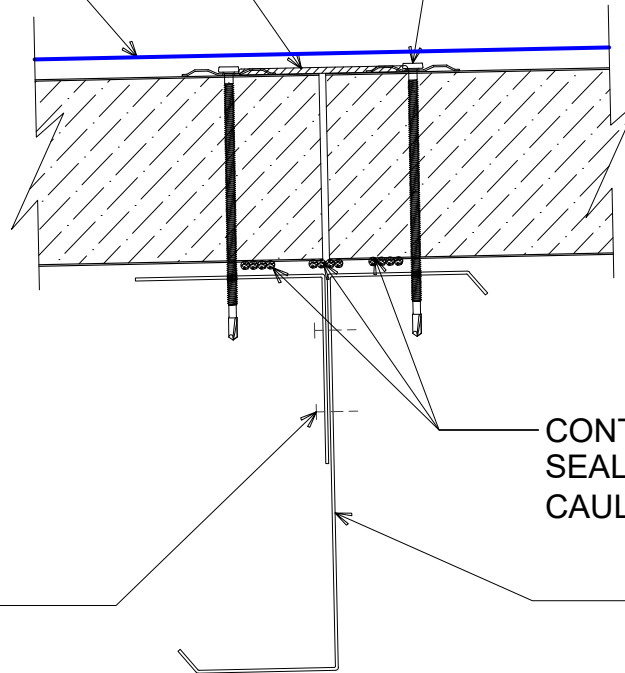


6" WIDE CONTINUOUS 5.5 MIL FSK FACING TAPE AT END JOINTS

ONEDEK® THERMOPLASTIC ROOF MEMBRANE (SEE "ONEDEK® ROOFING MEMBRANE" FOR ATTACHMENT OPTIONS)

#12 - 24 x _" TRUFEST PURLIN FASTENERS W/ "RP-01" ROOF DECK PLATE (REFER TO RD1 FASTENING SYSTEM)



NOTE: ENGINEER OF RECORD TO DETERMINE THE REQUIRED ATTACHMENT METHOD OF SUPPORT ANGLE TO PURLIN AND ENSURE CONTINUITY OF SHEAR LOAD TRANSFER AT THIS LOCATION.

CONTINUOUS 1/2" Ø BEAD OF BUTYL SEALANT (CONNECT ENDS OF CAULK BEADS TO CLOSE AND BOX)

SUPPORT ANGLE AND FASTENERS BY OTHERS (NOT BY ONEDEK® SUPPLIER)

SECONDARY FRAMING (NOT BY ONEDEK® SUPPLIER)

BUTT JOINT DETAIL - PURLIN

(SECTION VIEW)

DETAIL:

BUTT JOINT - PURLIN

APPLICATION:
RD1 ROOF DECK, COMMERCIAL & INDUSTRIAL, COLD-STORAGE
AWIP DETAIL NUMBER:
RDR-CJCS-PT-001

DATE:
11/30/22

DRAWN BY:
MMF

SHEET:
1 OF 1

929 ALDRIDGE ROAD
VACAVILLE, CA 95688
TEL: (707) 359-2280
FAX: (707) 359-2286
WWW.AWIPANELS.COM

