

"BC-02" 20 GA CHANNEL CAP W/
 #14 - 13 x 1 1/2" TRUSS HEAD TEK
 FASTENERS 12" O/C. W/ BUTYL
 SEALANT AT FLANGES (MARRY TO
 VERTICAL SEALANT)

#15 - 13 x 1 1/4" TRUSS HEAD
 FASTENERS W/ "RP-02" BARBED
 MEMBRANE PLATE 6" O/C

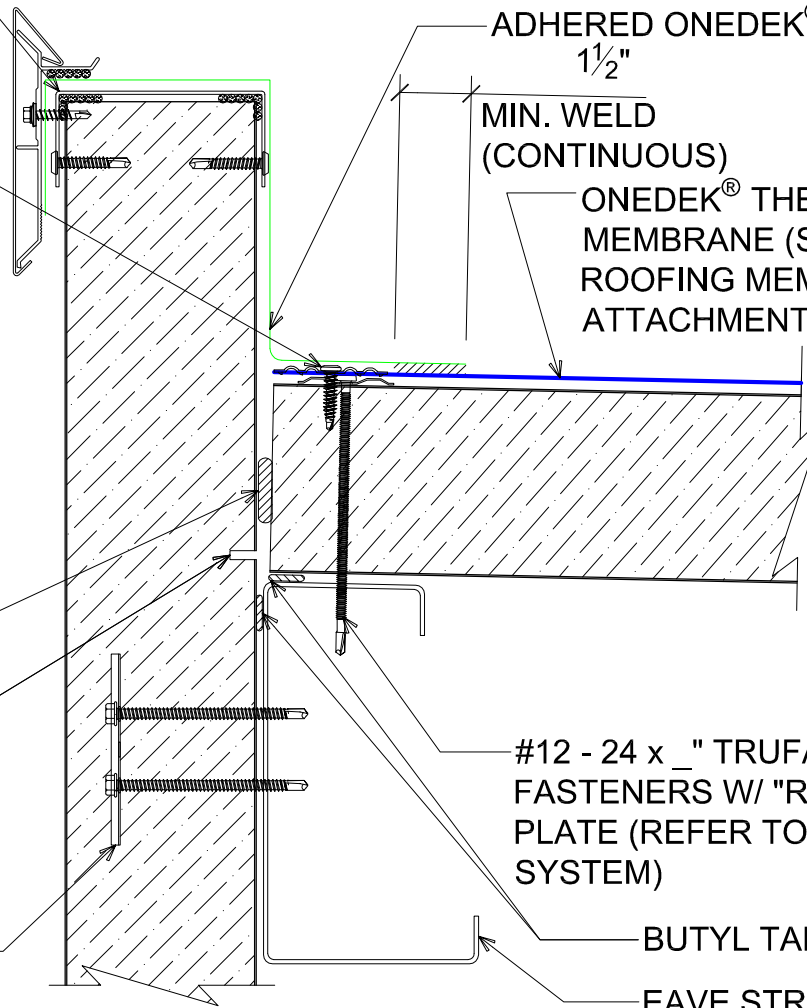
NOTE: REFER TO DETAIL _E FOR
 EDGE METAL ASSEMBLY
 INFORMATION.

NOTE: BUTYL SEALANT AT WALL
 JOINERY NOT SHOWN FOR CLARITY.
 ENSURE ALL SEALANTS MARRY TO
 CREATE A THERMAL ENVELOPE.

FILL VOID WITH ONE-PART
 EXPANDING FOAM SEALANT

CONTINUOUS THERMAL
 CUT FOR COLD STORAGE
 APPLICATIONS

"WC-01" PANEL CLIP W/
 () 1/4 - 14 x _ TEK 3 FASTENERS
 W/O WASHER AT PANEL JOINT



ADHERED ONEDEK® FLASHING
 1/2"

MIN. WELD
 (CONTINUOUS)

ONEDEK® THERMOPLASTIC ROOF
 MEMBRANE (SEE "ONEDEK®
 ROOFING MEMBRANE" FOR
 ATTACHMENT OPTIONS)

#12 - 24 x _" TRUFAST PURLIN
 FASTENERS W/ "RP-01" ROOF DECK
 PLATE (REFER TO RD1 FASTENING
 SYSTEM)

BUTYL TAPE

EAVE STRUT (NOT BY
 ONEDEK® SUPPLIER)

PARAPET W/ EDGE METAL (HIGH EAVE)

(SECTION VIEW)

DETAIL: PARAPET W/ EDGE METAL (HIGH EAVE)

929 ALDRIDGE ROAD
 VACAVILLE, CA 95688
 TEL: (707) 359-2280
 FAX: (707) 359-2286
 WWW.AWIPANELS.COM

All Weather
 Insulated Panels



APPLICATION: RD1 ROOF DECK, COMMERCIAL & INDUSTRIAL, COLD-STORAGE
 AWIP DETAIL NUMBER: RDR-CJCS-HEW-005

DATE: 11/07/22
 DRAWN BY: MMF

SHEET: 1 OF 1

"BC-02" 20 GA CHANNEL CAP W/
 #14 - 13 x 1 1/2" TRUSS HEAD TEK
 FASTENERS 12" O/C. W/ BUTYL
 SEALANT AT FLANGES (MARRY TO
 VERTICAL SEALANT)

#12-14 x 1 1/4" HWH/BD TEK 2
 STAINLESS STEEL FASTENERS
 12" O/C

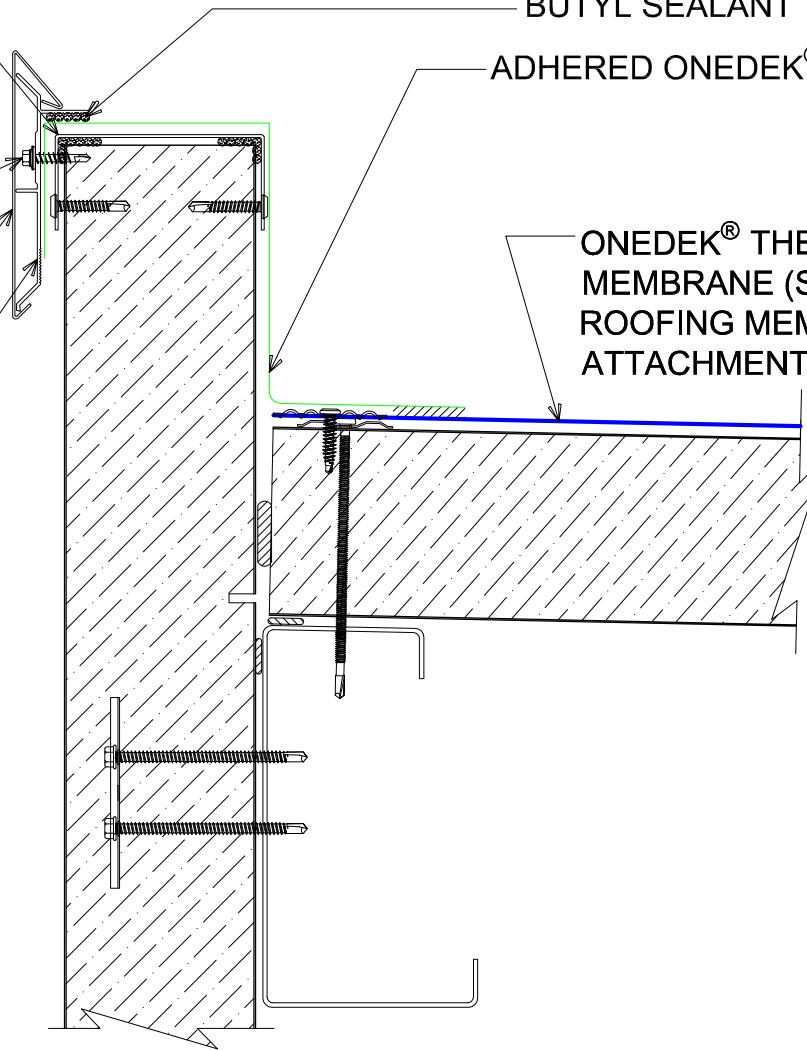
AF-55 FASCIA COVER (12'-0"
 LENGTHS)

ANCHOR BAR EXTRUDED

BUTYL SEALANT

ADHERED ONEDEK® FLASHING

ONEDEK® THERMOPLASTIC ROOF
 MEMBRANE (SEE "ONEDEK®
 ROOFING MEMBRANE" FOR
 ATTACHMENT OPTIONS)



#E PARAPET W/ EDGE METAL (HIGH EAVE)

(SECTION VIEW)

DETAIL:

PARAPET W/ EDGE METAL (HIGH EAVE), AF-55

APPLICATION:
 RD1 ROOF DECK, COMMERCIAL & INDUSTRIAL, COLD-STORAGE
 AW/P DETAIL NUMBER:
 RDR-CICS-HEW-005

DATE:
 11/07/22

SHEET:
 1 OF 1
 DRAWN BY:
 MMF

929 ALDRIDGE ROAD
 VACAVILLE, CA 95688
 TEL: (707) 359-2280
 FAX: (707) 359-2286
 WWW.AWIPANELS.COM



"BC-02" 20 GA CHANNEL CAP W/
 #14 - 13 x 1½" TRUSS HEAD TEK
 FASTENERS 12" O/C. W/ BUTYL
 SEALANT AT FLANGES (MARRY TO
 VERTICAL SEALANT)

#12-14 x 1¼" HWH/BD TEK 2
 STAINLESS STEEL FASTENERS
 12" O/C

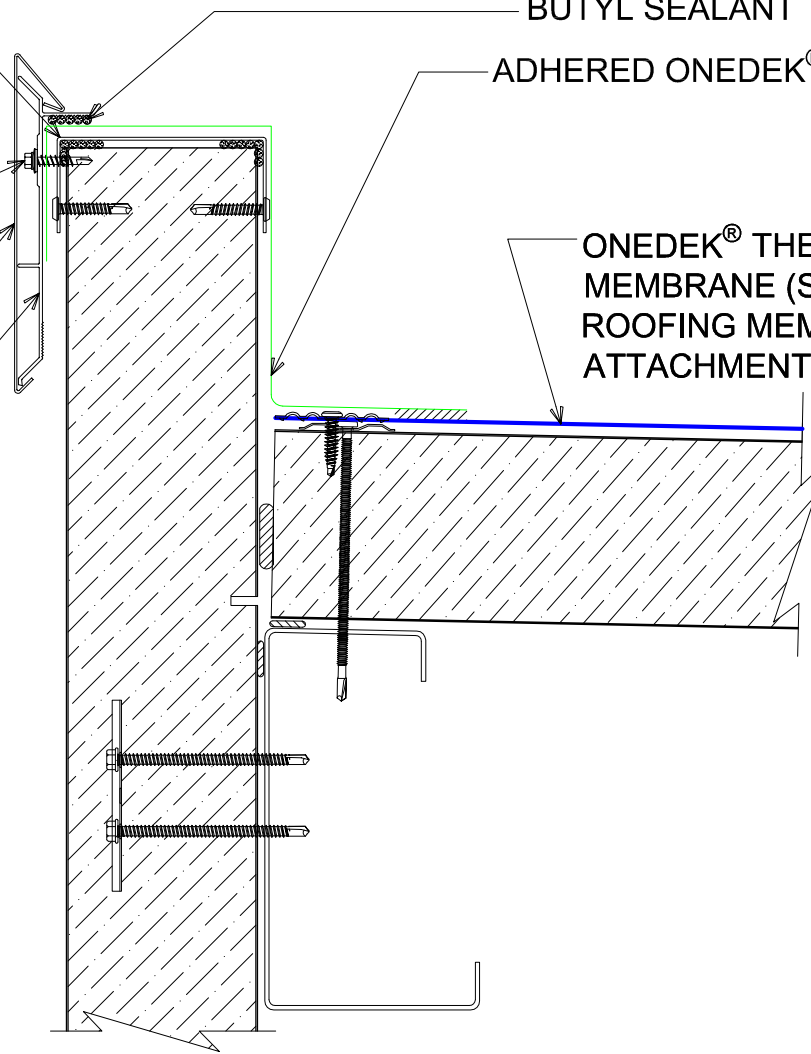
AF-70 FASCIA COVER (12'-0"
 LENGTHS)

ANCHOR BAR EXTRUDED

BUTYL SEALANT

ADHERED ONEDEK® FLASHING

ONEDEK® THERMOPLASTIC ROOF
 MEMBRANE (SEE "ONEDEK®
 ROOFING MEMBRANE" FOR
 ATTACHMENT OPTIONS)



#E PARAPET W/ EDGE METAL (HIGH EAVE)

(SECTION VIEW)

DETAIL:

PARAPET W/ EDGE METAL (HIGH EAVE), AF-70

APPLICATION:
 RD1 ROOF DECK, COMMERCIAL & INDUSTRIAL, COLD-STORAGE
 AW/P DETAIL NUMBER:
 RDR-CICS-HEW-005

DATE:
 11/07/22

SHEET:
 1 OF 1
 DRAWN BY:
 MMF

929 ALDRIDGE ROAD
 VACAVILLE, CA 95688
 TEL: (707) 359-2280
 FAX: (707) 359-2286
 WWW.AWIPANELS.COM

