

"BC-02" 20 GA CHANNEL CAP W/
 #14 - 13 x 1½" TRUSS HEAD TEK
 FASTENERS 12" O/C. W/ BUTYL
 SEALANT AT FLANGES (MARRY TO
 VERTICAL SEALANT)

#15 - 13 x 1¼" TRUSS HEAD
 FASTENERS W/ "RP-02" BARBED
 MEMBRANE PLATE 6" O/C

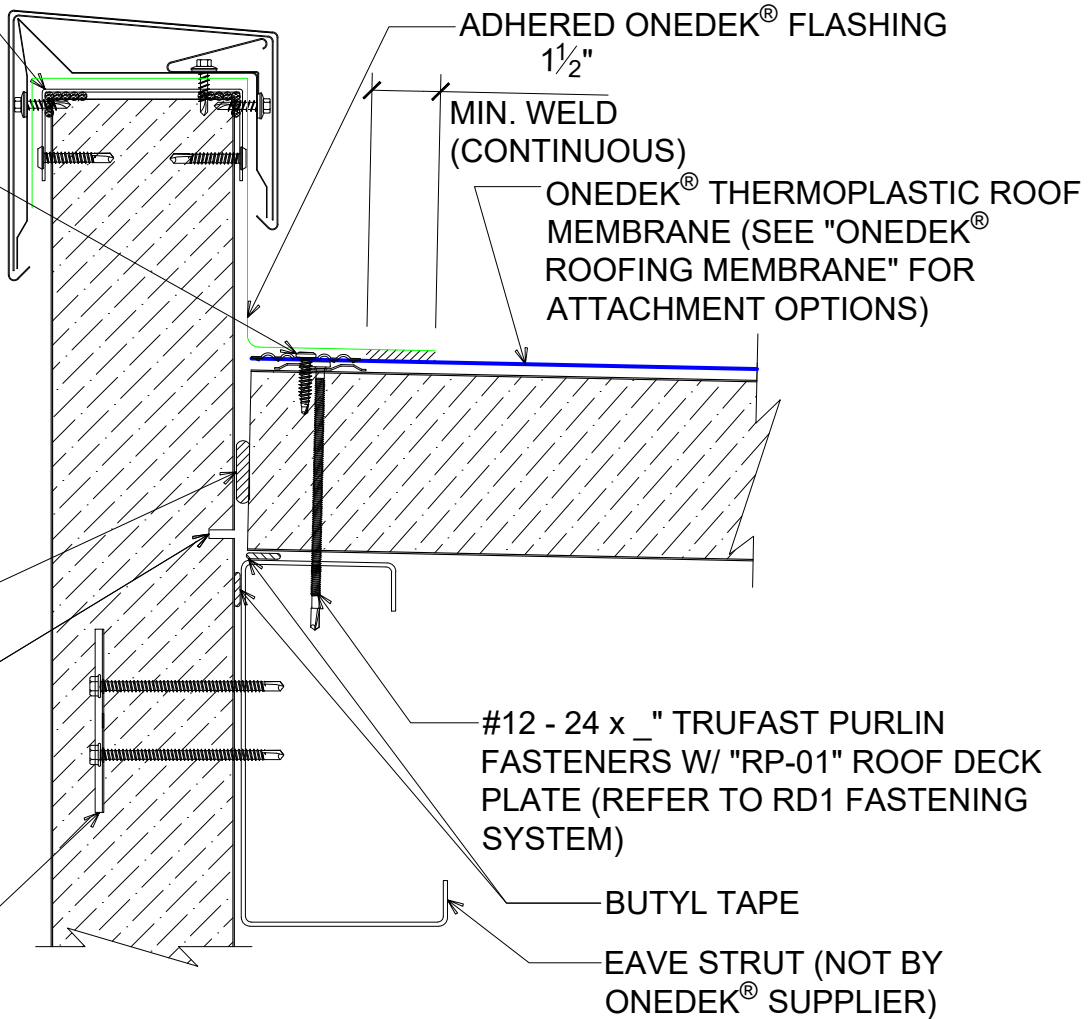
NOTE: REFER TO DETAIL _E FOR
 EDGE METAL ASSEMBLY
 INFORMATION.

NOTE: BUTYL SEALANT AT WALL
 JOINERY NOT SHOWN FOR CLARITY.
 ENSURE ALL SEALANTS MARRY TO
 CREATE A THERMAL ENVELOPE.

FILL VOID WITH ONE-PART
 EXPANDING FOAM SEALANT

CONTINUOUS THERMAL
 CUT FOR COLD STORAGE
 APPLICATIONS

"WC-01" PANEL CLIP W/
 () ¼ - 14 x _ TEK 3 FASTENERS
 W/O WASHER AT PANEL JOINT



BASE FLASHING AT PARAPET W/ METAL COPING (HIGH EAVE)

(SECTION VIEW)



DETAIL: **PARAPET W/ METAL COPING (HIGH EAVE)**

APPLICATION: RD1 ROOF DECK, COMMERCIAL & INDUSTRIAL, COLD-STORAGE
 AWIP DETAIL NUMBER: RDR-CJCS-HEW-001

929 ALDRIDGE ROAD
 VACAVILLE, CA 95688
 TEL: (707) 359-2280
 FAX: (707) 359-2286
 WWW.AWIPANELS.COM

All Weather
 Insulated Panels

AWIP

SHEET: 1 OF 1
 DATE: 02/06/23
 DRAWN BY: MMF

"BC-02" 20 GA CHANNEL CAP W/
#14 - 13 x 1½" TRUSS HEAD TEK
FASTENERS 12" O/C. W/ BUTYL
SEALANT AT FLANGES (MARRY TO
VERTICAL SEALANT)

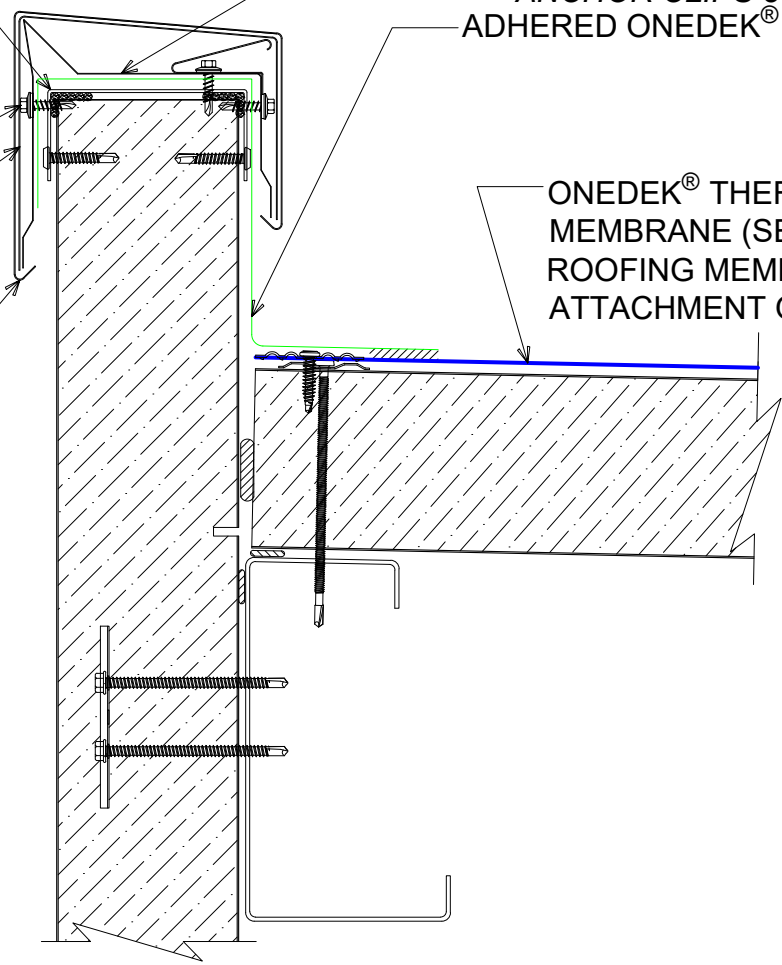
W/ #12-14 x 1" TEK 3 STAINLESS
STEEL FASTENERS

8" WIDE CONCEALED SPLICE
PLATE, WITH DUAL NON-CURING
SEALANT STRIPS, AT EACH JOINT

GC-64 COPING COVER (12'-0"
LENGTHS)

12" WIDE 16 GA. GALVANIZED
ANCHOR CLIPS 3'-0" O/C
ADHERED ONEDEK® FLASHING

ONEDEK® THERMOPLASTIC ROOF
MEMBRANE (SEE "ONEDEK®
ROOFING MEMBRANE" FOR
ATTACHMENT OPTIONS)



#E BASE FLASHING AT PARAPET W/ METAL COPING (HIGH EAVE)

(SECTION VIEW)

DETAIL:

PARAPET W/ METAL COPING (HIGH EAVE), GC-64

APPLICATION: RD1 ROOF DECK, COMMERCIAL & INDUSTRIAL, COLD-STORAGE	DATE: 02/06/23	SHEET: 1
AWIP DETAIL NUMBER: RDR-CICS-HEW-001	DRAWN BY: MMF	OF 1

929 ALDRIDGE ROAD
VACAVILLE, CA 95688
TEL: (707) 359-2280
FAX: (707) 359-2286
WWW.AWIPANELS.COM

All Weather
Insulated Panels

