

NOTE: REFER TO DETAIL _E FOR
EDGE METAL ASSEMBLY
INFORMATION.

"BC-02" 20 GA CHANNEL CAP W/
#14 - 13 x 1½" TRUSS HEAD TEK
FASTENERS 12" O/C. W/ BUTYL
SEALANT AT FLANGES (MARRY
TO VERTICAL SEALANT)

NOTE: BUTYL SEALANT AT WALL
JOINERY NOT SHOWN FOR CLARITY.
ENSURE ALL SEALANTS MARRY TO
CREATE A THERMAL ENVELOPE.

FILL VOID WITH ONE-PART
EXPANDING FOAM SEALANT

CONTINUOUS THERMAL CUT FOR
COLD STORAGE APPLICATIONS

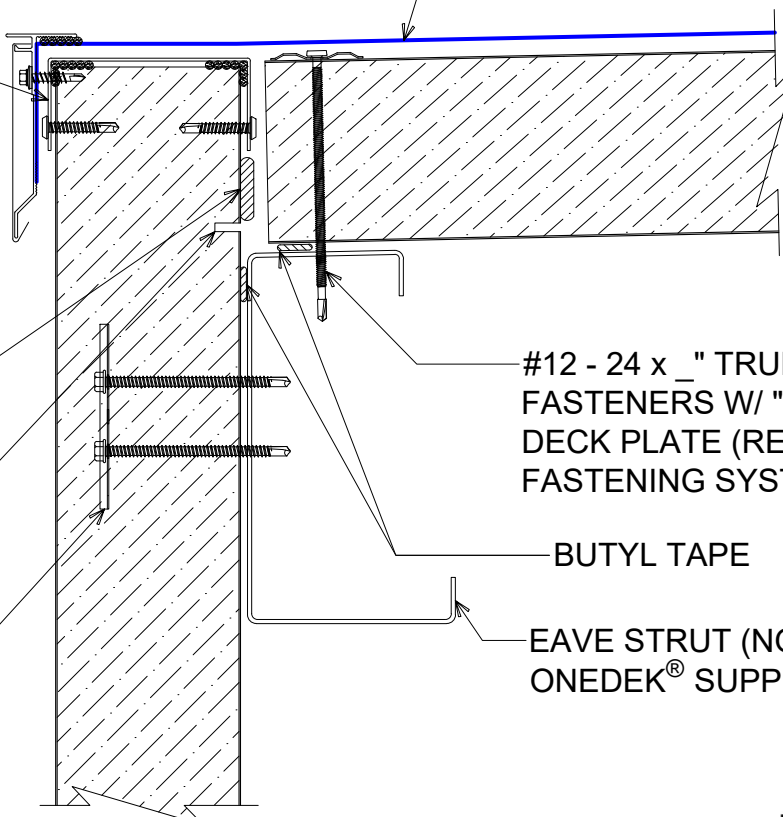
"WC-01" PANEL CLIP W/
() ¼ - 14 x _ TEK 3 FASTENERS
W/O WASHER AT PANEL JOINT

ONEDEK® THERMOPLASTIC
ROOF MEMBRANE
(SEE "ONEDEK® ROOFING
MEMBRANE" FOR
ATTACHMENT OPTIONS)

#12 - 24 x _" TRUFEST PURLIN
FASTENERS W/ "RP-01" ROOF
DECK PLATE (REFER TO RD1
FASTENING SYSTEM)

BUTYL TAPE

EAVE STRUT (NOT BY
ONEDEK® SUPPLIER)



DRAINING PERIMETER EDGE METAL (GUTTERLESS EAVE)

(SECTION VIEW)



DETAIL:	DRAINING PERIMETER EDGE METAL (GUTTERLESS EAVE)		
	DATE:	02/06/23	SHEET:
APPLICATION:	RD1 ROOF DECK, COMMERCIAL & INDUSTRIAL, COLD-STORAGE	DRAWN BY:	MMF
AWIP DETAIL NUMBER:	RDR-CJCS-GE-001		1 OF 1

929 ALDRIDGE ROAD
VACAVILLE, CA 95688
TEL: (707) 359-2280
FAX: (707) 359-2286
WWW.AWIPANELS.COM



ANCHOR BAR EXTRUDED

AFDE-45 DRIP EDGE COVER (12'-0"
LENGTHS)

#12-14 x 1 1/4" HWH/BD TEK 2
STAINLESS STEEL FASTENERS
12" O/C

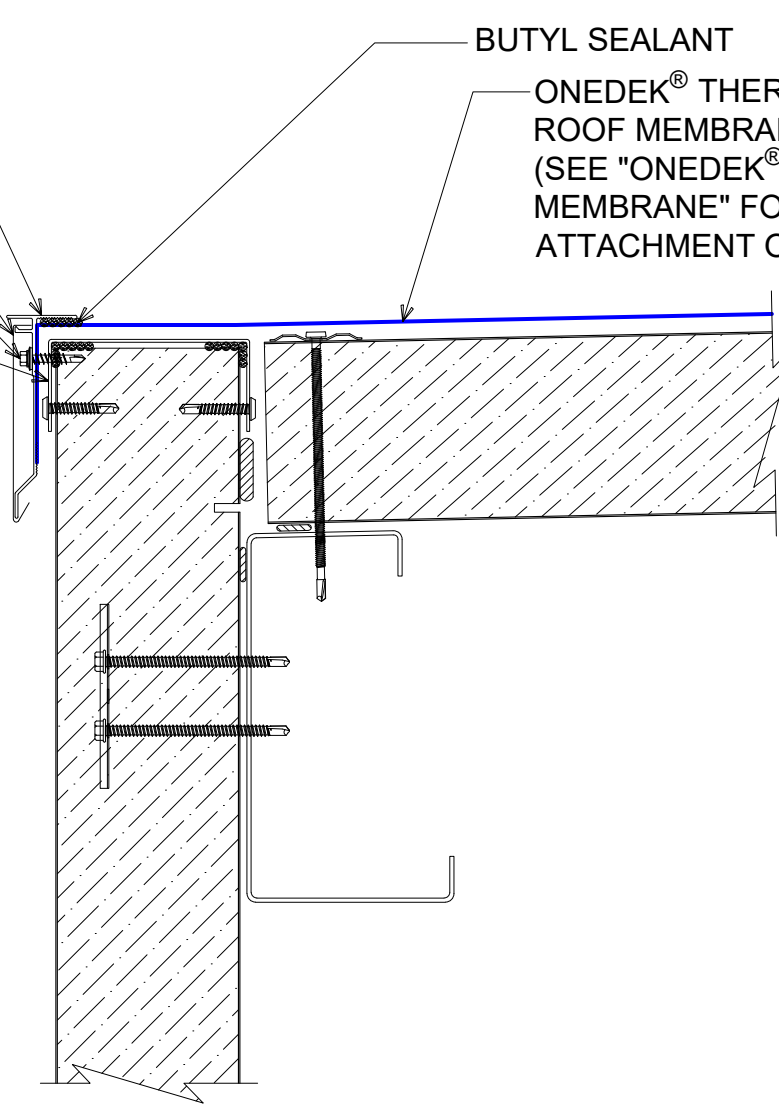
"BC-02" 20 GA CHANNEL CAP W/
#14 - 13 x 1 1/2" TRUSS HEAD TEK
FASTENERS 12" O/C. W/ BUTYL
SEALANT AT FLANGES (MARRY
TO VERTICAL SEALANT)

BUTYL SEALANT

ONEDEK® THERMOPLASTIC
ROOF MEMBRANE
(SEE "ONEDEK® ROOFING
MEMBRANE" FOR
ATTACHMENT OPTIONS)

#E DRAINING PERIMETER EDGE METAL (GUTTERLESS EAVE)

(SECTION VIEW)



DETAIL:

DRAINING PERIMETER EDGE (GUTTERLESS EAVE), AFDE-45

APPLICATION:

RD1 ROOF DECK, COMMERCIAL & INDUSTRIAL, COLD-STORAGE

AWIP DETAIL NUMBER:

RDR-C/ICS-GE-001

DATE:

02/06/23

DRAWN BY:

MMF

SHEET:

1

OF

1

929 ALDRIDGE ROAD
VACAVILLE, CA 95688
TEL: (707) 359-2280
FAX: (707) 359-2286
WWW.AWIPANELS.COM



ANCHOR BAR EXTRUDED

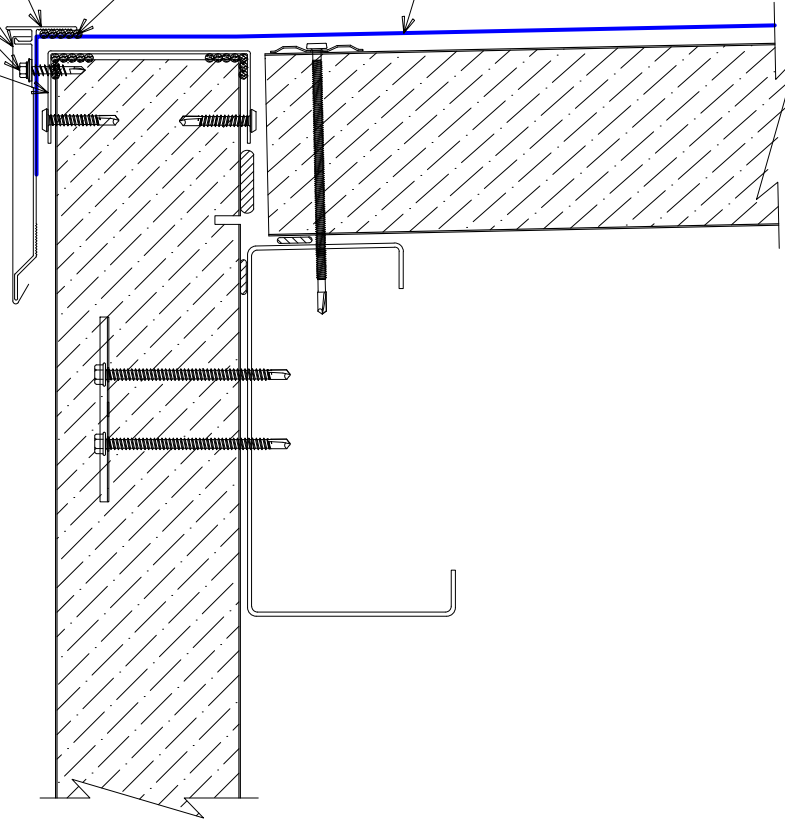
AFDE-60 DRIP EDGE COVER (12'-0"
LENGTHS)

#12-14 x 1 1/4" HWH/BD TEK 2
STAINLESS STEEL FASTENERS
12" O/C

"BC-02" 20 GA CHANNEL CAP W/
#14 - 13 x 1 1/2" TRUSS HEAD TEK
FASTENERS 12" O/C. W/ BUTYL
SEALANT AT FLANGES (MARRY
TO VERTICAL SEALANT)

BUTYL SEALANT

ONEDEK® THERMOPLASTIC
ROOF MEMBRANE
(SEE "ONEDEK® ROOFING
MEMBRANE" FOR
ATTACHMENT OPTIONS)



#E DRAINING PERIMETER EDGE METAL (GUTTERLESS EAVE)

(SECTION VIEW)

DETAIL:

DRAINING PERIMETER EDGE (GUTTERLESS EAVE), AFDE-60

APPLICATION:
RD1 ROOF DECK, COMMERCIAL & INDUSTRIAL, COLD-STORAGE
AWIP DETAIL NUMBER:
RDR-C/ICS-GE-001

DATE:
02/06/23
DRAWN BY:
MMF

SHEET:
1
OF
1

929 ALDRIDGE ROAD
VACAVILLE, CA 95688
TEL: (707) 359-2280
FAX: (707) 359-2286
WWW.AWIPANELS.COM

All Weather
Insulated Panels



ANCHOR BAR EXTRUDED

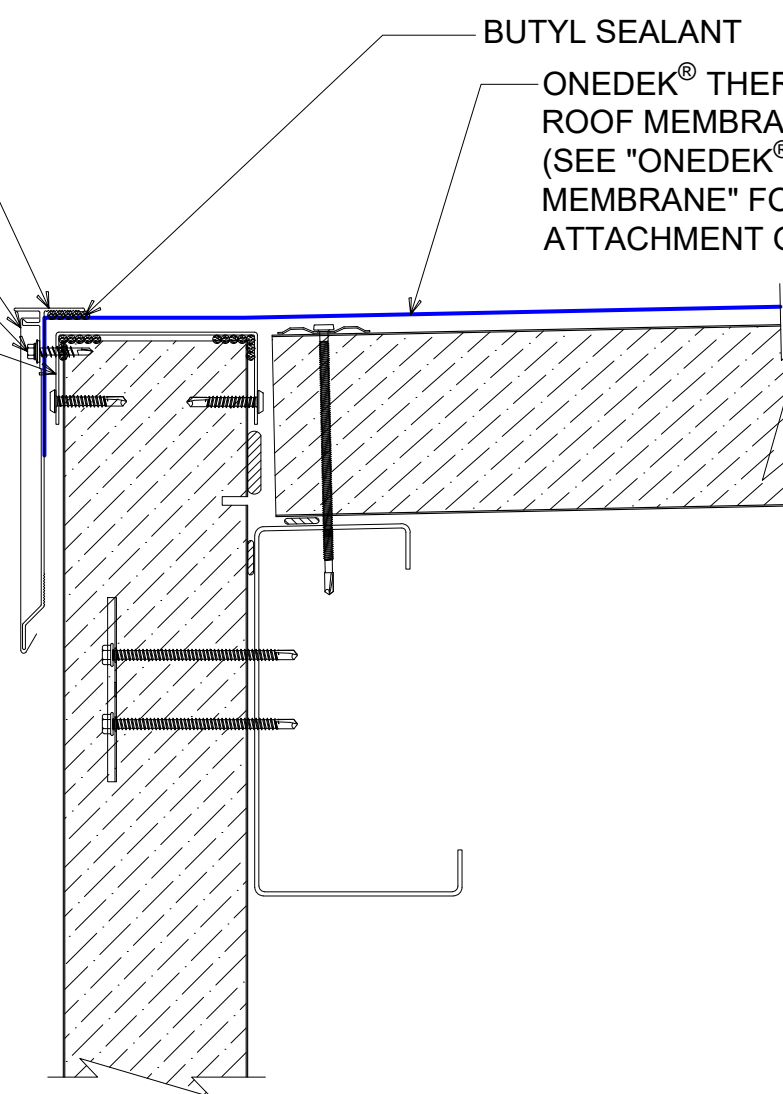
AFDE-75 DRIP EDGE COVER (12'-0"
LENGTHS)

#12-14 x 1 1/4" HWH/BD TEK 2
STAINLESS STEEL FASTENERS
12" O/C

"BC-02" 20 GA CHANNEL CAP W/
#14 - 13 x 1 1/2" TRUSS HEAD TEK
FASTENERS 12" O/C. W/ BUTYL
SEALANT AT FLANGES (MARRY
TO VERTICAL SEALANT)

BUTYL SEALANT

ONEDEK® THERMOPLASTIC
ROOF MEMBRANE
(SEE "ONEDEK® ROOFING
MEMBRANE" FOR
ATTACHMENT OPTIONS)



#E DRAINING PERIMETER EDGE METAL (GUTTERLESS EAVE)

(SECTION VIEW)

DETAIL:

DRAINING PERIMETER EDGE (GUTTERLESS EAVE), AFDE-75

APPLICATION:	DATE:	SHEET:
RD1 ROOF DECK, COMMERCIAL & INDUSTRIAL, COLD-STORAGE	02/06/23	1
AWIP DETAIL NUMBER:	DRAWN BY:	OF 1
RDR-C/ICS-GE-001	MMF	

929 ALDRIDGE ROAD
VACAVILLE, CA 95688
TEL: (707) 359-2280
FAX: (707) 359-2286
WWW.AWIPANELS.COM

