

"BC-02" 20 GA CHANNEL CAP W/  
#14 - 13 x 1/2" TRUSS HEAD TEK  
FASTENERS 12" O/C. W/ BUTYL  
SEALANT AT FLANGES (MARRY TO  
VERTICAL SEALANT)

NOTE: REFER TO DETAIL \_E FOR  
EDGE METAL ASSEMBLY  
INFORMATION.

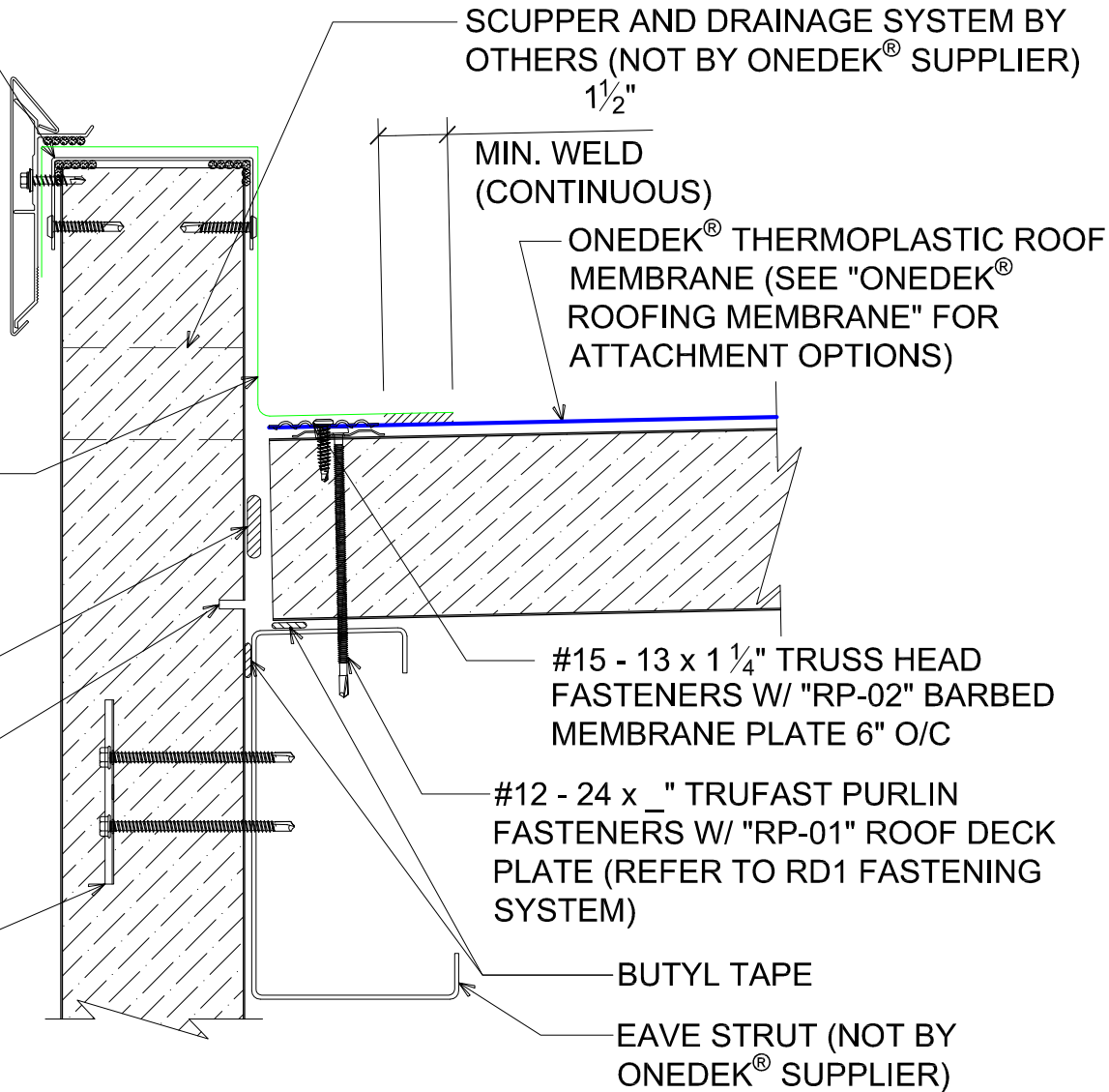
ADHERED ONEDEK® FLASHING

NOTE: BUTYL SEALANT AT WALL  
JOINERY NOT SHOWN FOR CLARITY.  
ENSURE ALL SEALANTS MARRY TO  
CREATE A THERMAL ENVELOPE.

FILL VOID WITH ONE-PART  
EXPANDING FOAM SEALANT

CONTINUOUS THERMAL  
CUT FOR COLD STORAGE  
APPLICATIONS

"WC-01" PANEL CLIP W/  
( ) 1/4 - 14 x \_ TEK 3 FASTENERS  
W/O WASHER AT PANEL JOINT



SCUPPER AND DRAINAGE SYSTEM BY  
OTHERS (NOT BY ONEDEK® SUPPLIER)  
1 1/2"

MIN. WELD  
(CONTINUOUS)

ONEDEK® THERMOPLASTIC ROOF  
MEMBRANE (SEE "ONEDEK®  
ROOFING MEMBRANE" FOR  
ATTACHMENT OPTIONS)

#15 - 13 x 1 1/4" TRUSS HEAD  
FASTENERS W/ "RP-02" BARBED  
MEMBRANE PLATE 6" O/C

#12 - 24 x \_" TRUFAST PURLIN  
FASTENERS W/ "RP-01" ROOF DECK  
PLATE (REFER TO RD1 FASTENING  
SYSTEM)

BUTYL TAPE

EAVE STRUT (NOT BY  
ONEDEK® SUPPLIER)

# # PARAPET W/ EDGE METAL (EAVE)

(SECTION VIEW)

DETAIL: PARAPET W/ EDGE METAL (EAVE)

929 ALDRIDGE ROAD  
VACAVILLE, CA 95688  
TEL: (707) 359-2280  
FAX: (707) 359-2286  
WWW.AWIPANELS.COM

**All Weather**  
Insulated Panels



DATE: 11/07/22  
DRAWN BY: MMF

SHEET: 1 OF 1

APPLICATION: RD1 ROOF DECK, COMMERCIAL & INDUSTRIAL, COLD-STORAGE  
AWIP DETAIL NUMBER: RDR-CJCS-EW-003

"BC-02" 20 GA CHANNEL CAP W/  
 #14 - 13 x 1½" TRUSS HEAD TEK  
 FASTENERS 12" O/C. W/ BUTYL  
 SEALANT AT FLANGES (MARRY TO  
 VERTICAL SEALANT)

#12-14 x 1¼" HWH/BD TEK 2  
 STAINLESS STEEL FASTENERS  
 12" O/C

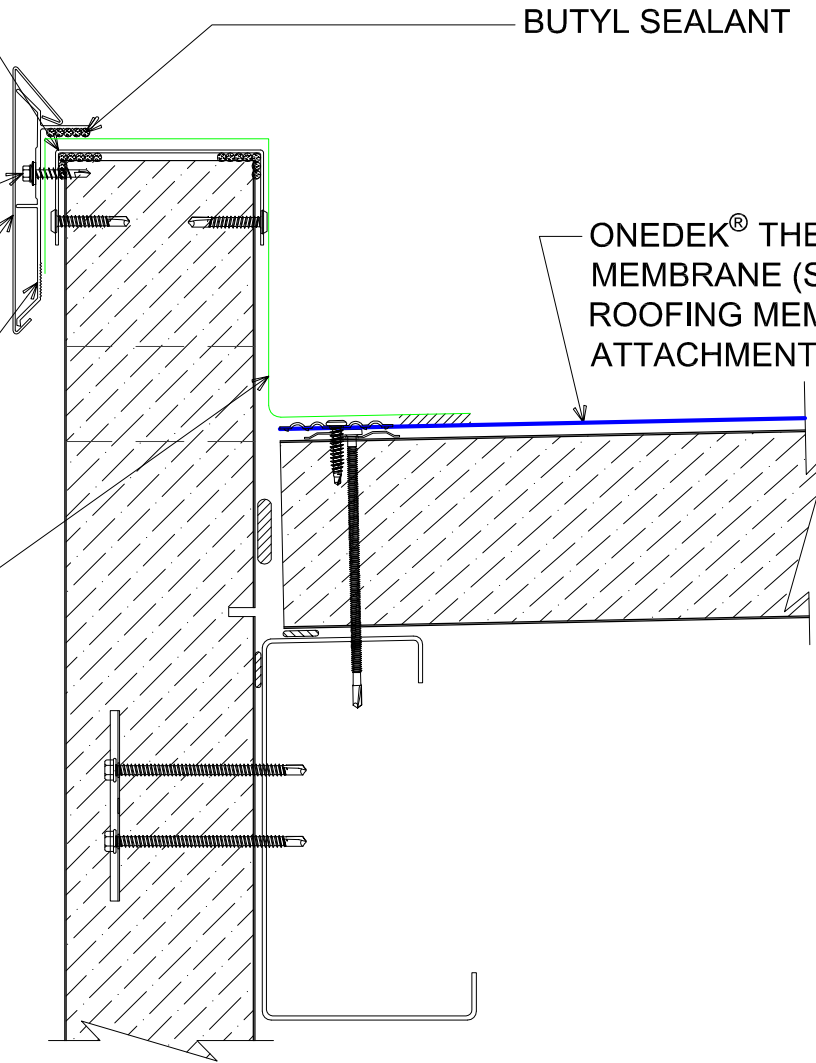
AF-55 FASCIA COVER (12'-0"  
 LENGTHS)

ANCHOR BAR EXTRUDED

ADHERED ONEDEK® FLASHING

BUTYL SEALANT

ONEDEK® THERMOPLASTIC ROOF  
 MEMBRANE (SEE "ONEDEK®  
 ROOFING MEMBRANE" FOR  
 ATTACHMENT OPTIONS)



# #E PARAPET W/ EDGE METAL (EAVE)

(SECTION VIEW)

DETAIL: **PARAPET W/ EDGE METAL (EAVE), AF-55**

DATE:	11/07/22	SHEET:	1
APPLICATION:	RD1 ROOF DECK, COMMERCIAL & INDUSTRIAL, COLD-STORAGE	DRAWN BY:	MMF
AW/P DETAIL NUMBER:	RDR-CICS-EW-003		OF 1

929 ALDRIDGE ROAD  
 VACAVILLE, CA 95688  
 TEL: (707) 359-2280  
 FAX: (707) 359-2286  
 WWW.AWIPANELS.COM



"BC-02" 20 GA CHANNEL CAP W/  
 #14 - 13 x 1 1/2" TRUSS HEAD TEK  
 FASTENERS 12" O/C. W/ BUTYL  
 SEALANT AT FLANGES (MARRY TO  
 VERTICAL SEALANT)

#12-14 x 1 1/4" HWH/BD TEK 2  
 STAINLESS STEEL FASTENERS  
 12" O/C

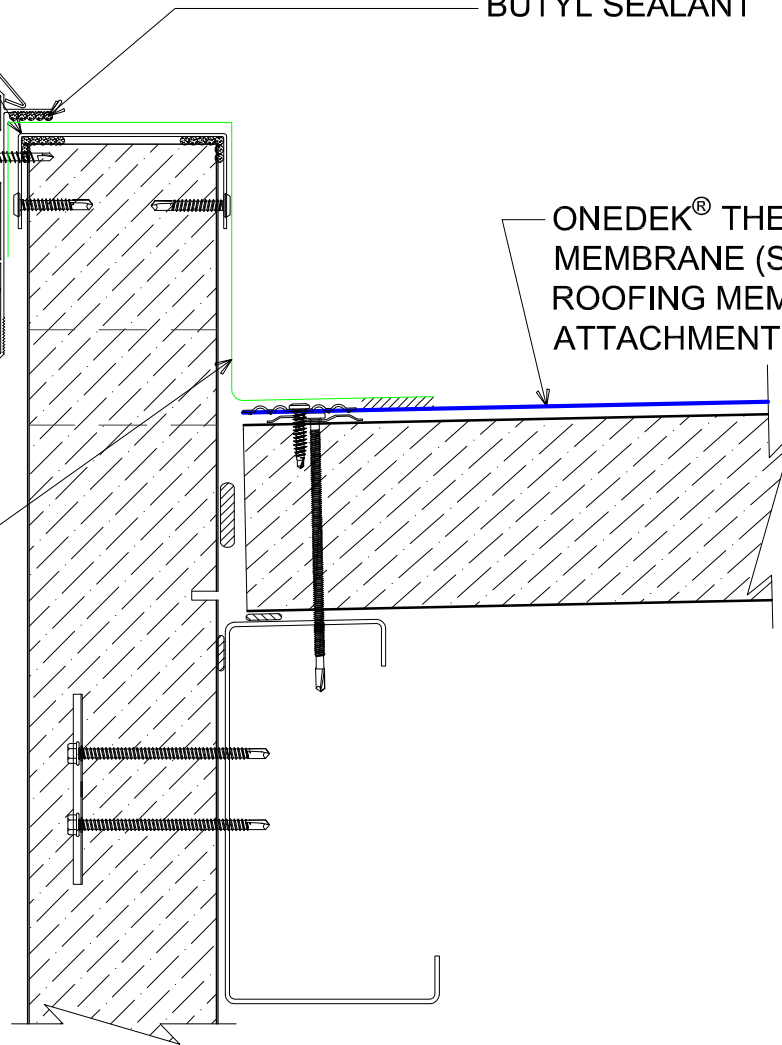
AF-70 FASCIA COVER (12'-0"  
 LENGTHS)

ANCHOR BAR EXTRUDED

ADHERED ONEDEK® FLASHING

BUTYL SEALANT

ONEDEK® THERMOPLASTIC ROOF  
 MEMBRANE (SEE "ONEDEK®  
 ROOFING MEMBRANE" FOR  
 ATTACHMENT OPTIONS)



# #E PARAPET W/ EDGE METAL (EAVE)

(SECTION VIEW)

DETAIL:  
**PARAPET W/ EDGE METAL (EAVE), AF-70**

929 ALDRIDGE ROAD  
 VACAVILLE, CA 95688  
 TEL: (707) 359-2280  
 FAX: (707) 359-2286  
 WWW.AWIPANELS.COM

**All Weather**  
 Insulated Panels

**AWIP**

APPLICATION:  
 RD1 ROOF DECK, COMMERCIAL & INDUSTRIAL, COLD-STORAGE  
 AWIP DETAIL NUMBER:  
 RDR-CICS-EW-003

DATE:  
 11/07/22  
 DRAWN BY:  
 MMF

SHEET:  
 1  
 OF  
 1