

"BC-02" 20 GA CHANNEL CAP W/
#14 - 13 x 1½" TRUSS HEAD TEK
FASTENERS 12" O/C. W/ BUTYL
SEALANT AT FLANGES (MARRY TO
VERTICAL SEALANT)

NOTE: REFER TO DETAIL _E FOR
EDGE METAL ASSEMBLY
INFORMATION.

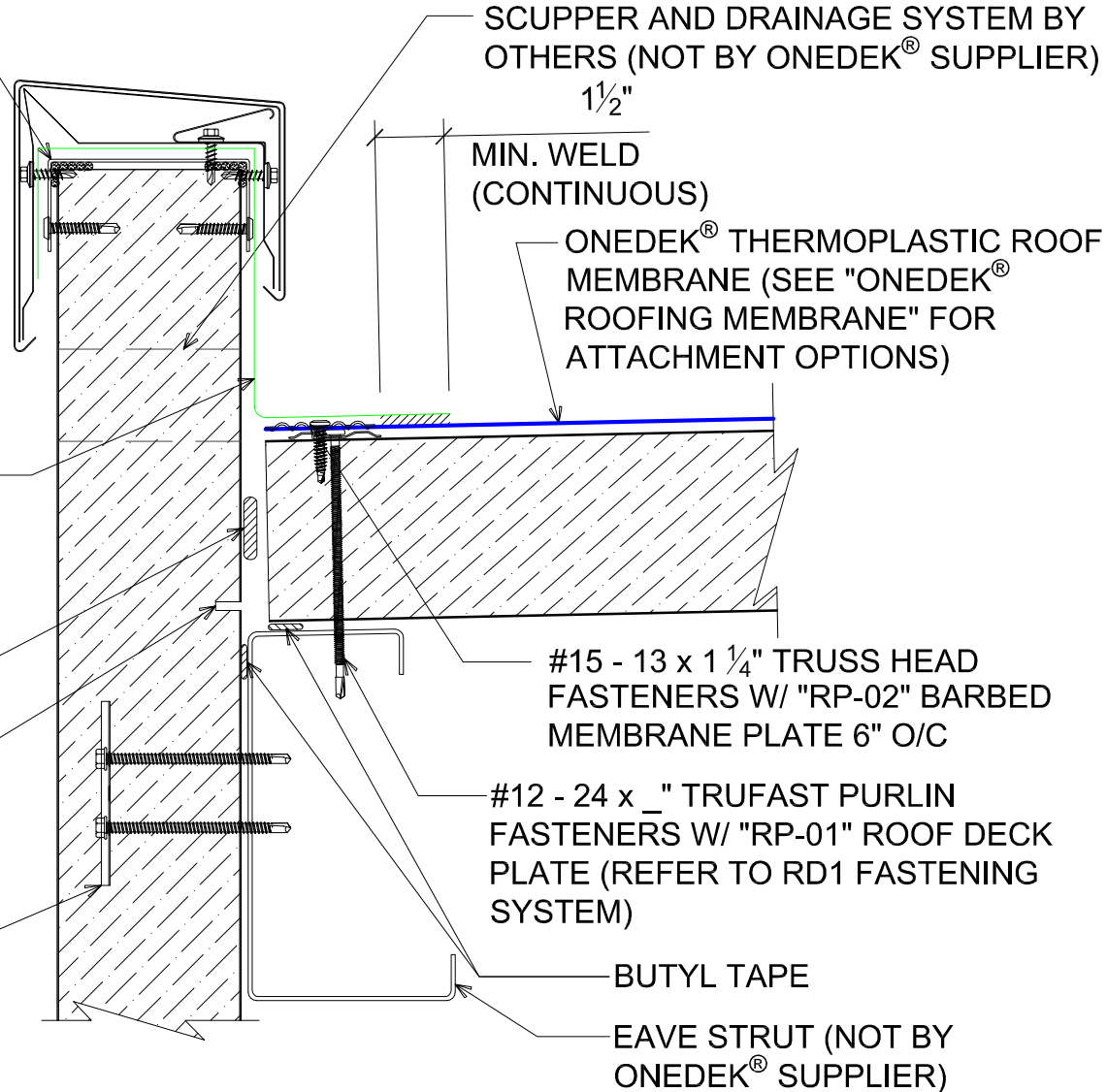
ADHERED ONEDEK® FLASHING

NOTE: BUTYL SEALANT AT WALL
JOINERY NOT SHOWN FOR CLARITY.
ENSURE ALL SEALANTS MARRY TO
CREATE A THERMAL ENVELOPE.

FILL VOID WITH ONE-PART
EXPANDING FOAM SEALANT

CONTINUOUS THERMAL
CUT FOR COLD STORAGE
APPLICATIONS

"WC-01" PANEL CLIP W/
() ¼ - 14 x _ TEK 3 FASTENERS
W/O WASHER AT PANEL JOINT



BASE FLASHING AT PARAPET W/ METAL COPING (EAVE)

(SECTION VIEW)

DETAIL:

PARAPET W/ METAL COPING (EAVE)

929 ALDRIDGE ROAD
VACAVILLE, CA 95688
TEL: (707) 359-2280
FAX: (707) 359-2286
WWW.AWIPANELS.COM

All Weather
Insulated Panels



APPLICATION: RD1 ROOF DECK, COMMERCIAL & INDUSTRIAL, COLD-STORAGE

AWIP DETAIL NUMBER: RDR-CJCS-EW-001

DATE: 11/07/22

DRAWN BY: MMF

SHEET:

1 OF 1

"BC-02" 20 GA CHANNEL CAP W/
#14 - 13 x 1½" TRUSS HEAD TEK
FASTENERS 12" O/C. W/ BUTYL
SEALANT AT FLANGES (MARRY TO
VERTICAL SEALANT)

W/ #12-14 x 1" TEK 3 STAINLESS
STEEL FASTENERS

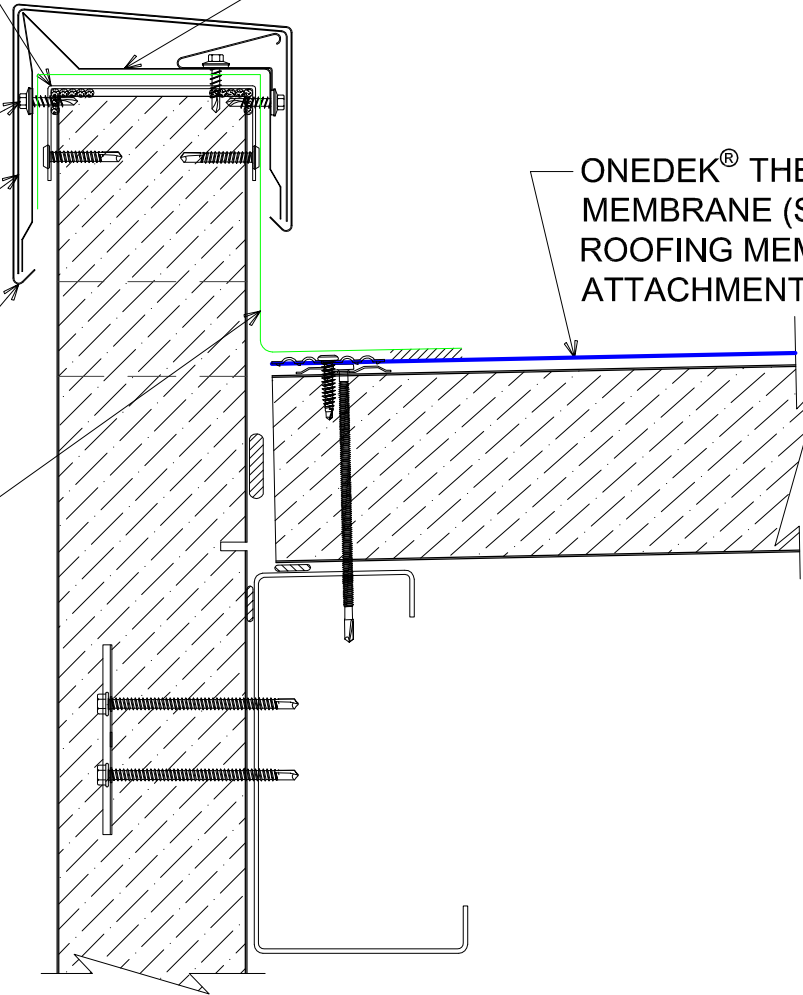
8" WIDE CONCEALED SPLICE
PLATE, WITH DUAL NON-CURING
SEALANT STRIPS, AT EACH JOINT

GC-64 COPING COVER (12'-0"
LENGTHS)

ADHERED ONEDEK® FLASHING

12" WIDE 16 GA. GALVANIZED
ANCHOR CLIPS 3'-0" O/C

ONEDEK® THERMOPLASTIC ROOF
MEMBRANE (SEE "ONEDEK®
ROOFING MEMBRANE" FOR
ATTACHMENT OPTIONS)



#E BASE FLASHING AT PARAPET W/ METAL COPING (EAVE)

(SECTION VIEW)

DETAIL:

PARAPET W/ METAL COPING (EAVE), GC-64

APPLICATION:
RD1 ROOF DECK, COMMERCIAL & INDUSTRIAL, COLD-STORAGE
AW/P DETAIL NUMBER:
RDR-CICS-EW-001

DATE:
11/07/22
DRAWN BY:
MMF

SHEET:
1
OF
1

929 ALDRIDGE ROAD
VACAVILLE, CA 95688
TEL: (707) 359-2280
FAX: (707) 359-2286
WWW.AWIPANELS.COM

All Weather
Insulated Panels

