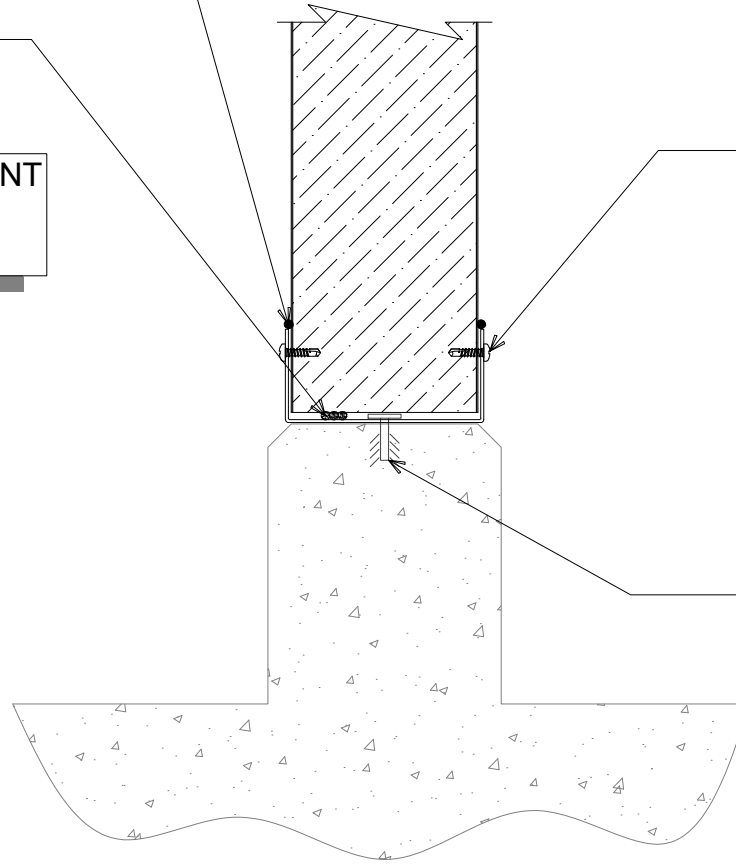
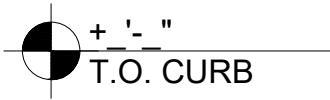


SILICONE SEALANT AFTER
TEMPERATURE PULL-DOWN
(OPTIONAL; NOT BY IMP SUPPLIER)

BUTYL SEALANT
(MARRY TO VERTICAL
SEALANT)

NOTE: REFER TO PANEL JOINT
DETAIL(S) FOR VERTICAL
SEALANT LOCATION(S).



"BC-01" U-CHANNEL W/
#10 x 3/4" PPH 12" O/C

CONCRETE ANCHORS
(NOT BY IMP SUPPLIER)

PARTITION BASE CONDITION - CURB

(SECTION VIEW)

DETAIL:

BASE CONDITION - CURB

APPLICATION:
PARTITION WALL, AMBIENT
AWIP DETAIL NUMBER:
APC-AA1-BC-002

DATE:
05/15/23
DRAWN BY:
MMF

SHEET:
1
OF
1

929 ALDRIDGE ROAD
VACAVILLE, CA 95688
TEL: (707) 359-2280
FAX: (707) 359-2286
WWW.AWIPANELS.COM

