

WOOD NAILER BY OTHERS
(NOT BY ONEDEK® SUPPLIER)
#15 - 13 x 1 1/4" TRUSS HEAD
FASTENERS W/ "RP-02" BARBED
MEMBRANE PLATE 6" O/C

NOTE: REFER TO DETAIL _E FOR
EDGE METAL ASSEMBLY
INFORMATION.

FILL VOID WITH ONE-PART
EXPANDING FOAM SEALANT
(NOT BY ONEDEK® SUPPLIER)

WALL SYSTEM BY OTHERS
(NOT BY ONEDEK® SUPPLIER)

ADHERED ONEDEK® FLASHING

1 1/2"

MIN. WELD
(CONTINUOUS)

ONEDEK® THERMOPLASTIC ROOF
MEMBRANE (SEE "ONEDEK®
ROOFING MEMBRANE" FOR
ATTACHMENT OPTIONS)

#12 - 24 x _" TRUFast PURLIN
FASTENERS W/ "RP-01" ROOF
DECK PLATE _" O/C

BUTYL TAPE

SECONDARY
FRAMING & RAKE
ANGLE BY OTHERS
(NOT BY ONEDEK®
SUPPLIER)

PARAPET W/ EDGE METAL (RAKE)

(SECTION VIEW)

DETAIL:

PARAPET W/ EDGE METAL (RAKE)

929 ALDRIDGE ROAD
VACAVILLE, CA 95688
TEL: (707) 359-2280
FAX: (707) 359-2286
WWW.AWIPANELS.COM

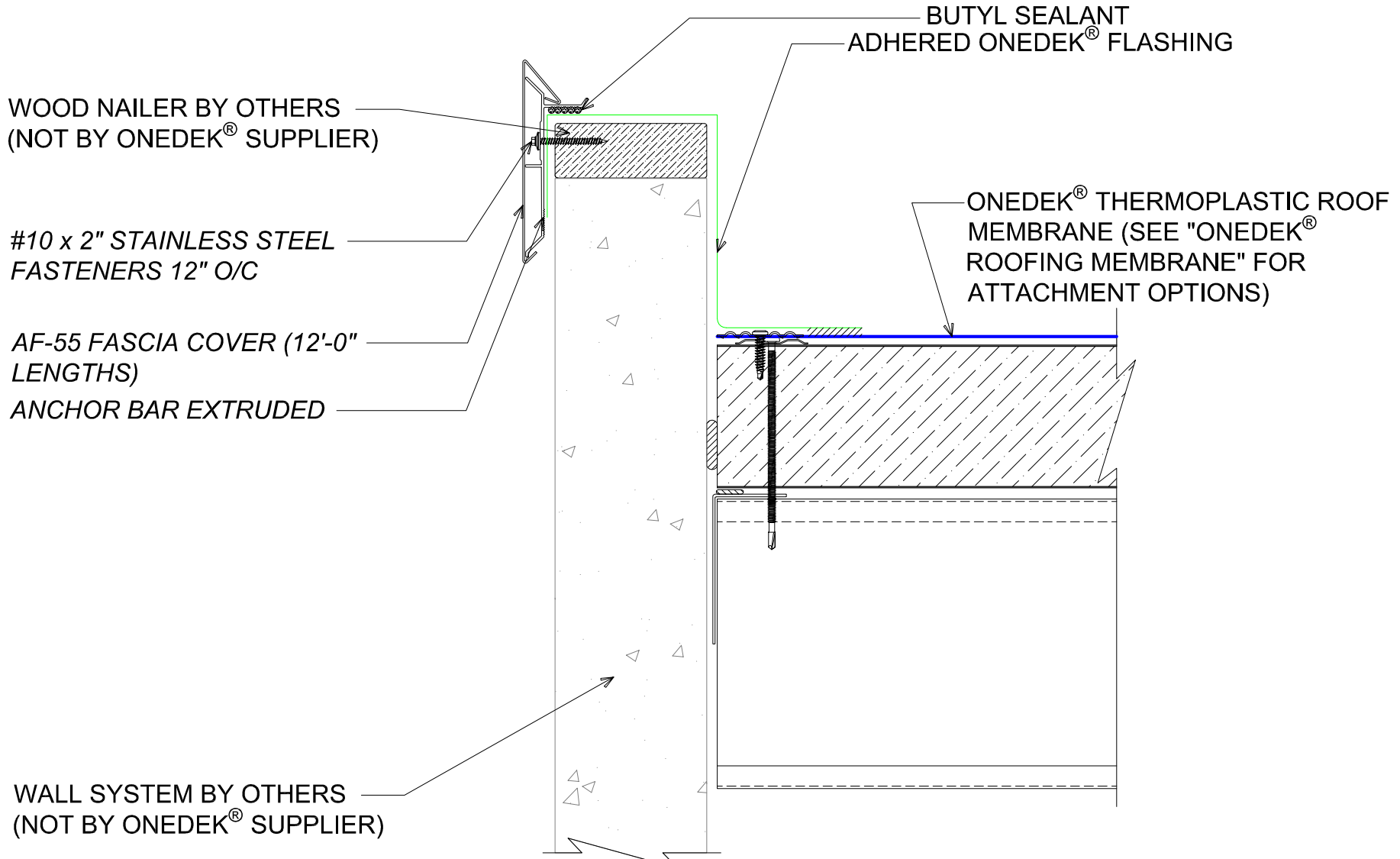
All Weather
Insulated Panels



APPLICATION:
RD1 ROOF DECK, COMMERCIAL & INDUSTRIAL, COLD-STORAGE
AWIP DETAIL NUMBER:
RDR-CICS-WBO-003

DATE:
11/07/22

SHEET:
DRAWN BY:
MMF
1
OF
1



#E PARAPET W/ EDGE METAL (RAKE)

(SECTION VIEW)

DETAIL: **PARAPET W/ EDGE METAL (RAKE), AF-55**

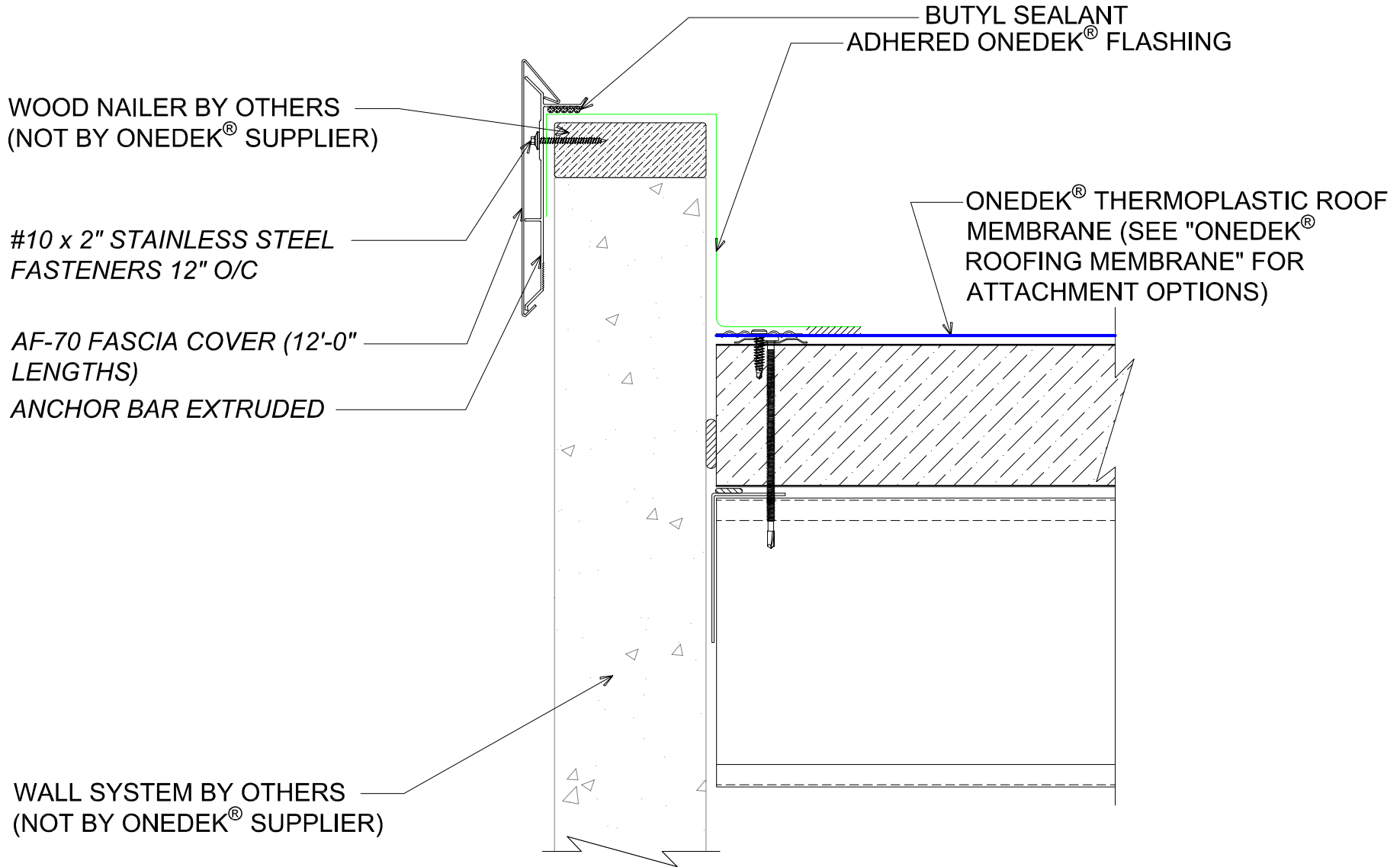
DATE:	11/07/22	SHEET:	1
DRAWN BY:	MMF	OF	1

APPLICATION:
RD1 ROOF DECK, COMMERCIAL & INDUSTRIAL, COLD-STORAGE
AWIP DETAIL NUMBER:
RDR-CICS-WBO-003

929 ALDRIDGE ROAD
VACAVILLE, CA 95688
TEL: (707) 359-2280
FAX: (707) 359-2286
WWW.AWIPANELS.COM

All Weather
Insulated Panels





#E PARAPET W/ EDGE METAL (RAKE)

(SECTION VIEW)

DETAIL:

PARAPET W/ EDGE METAL (RAKE), AF-70

APPLICATION:
RD1 ROOF DECK, COMMERCIAL & INDUSTRIAL, COLD-STORAGE
AW/P DETAIL NUMBER:
RDR-CICS-WBO-003

929 ALDRIDGE ROAD
VACAVILLE, CA 95688
TEL: (707) 359-2280
FAX: (707) 359-2286
WWW.AWIPANELS.COM



SHEET:
DATE: 11/07/22
DRAWN BY: MMF
1 OF 1