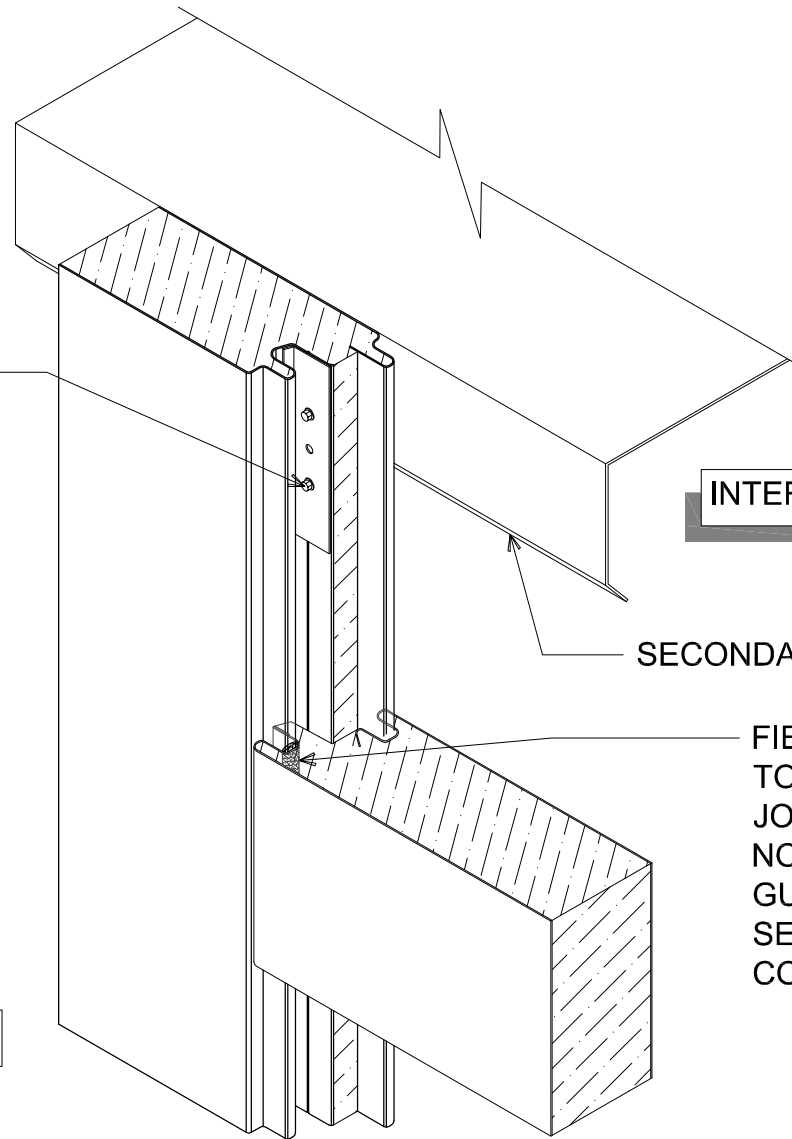


"WC-01" PANEL CLIP W/  
1/4" - TEK FASTENERS W/O WASHER  
(SEE PANEL JOINT AND  
INTERMEDIATE SUPPORT DETAILS  
FOR FASTENING REQUIREMENTS)

NOTE: REFER TO  
CONNECTION DETAILS FOR  
SPECIFIC LOCATION(S) OF  
MARRIAGE BEAD(S).

EXTERIOR



FIELD FILL WARM SIDE  
TONGUE AND GROOVE  
JOINT WITH CONTINUOUS  
NON-SKINNING  
GUN-GRADE BUTYL  
SEALANT TO EFFECT A  
COMPLETE VAPOR SEAL

# MARRIAGE BEAD DETAIL (COLD-STORAGE)

(ISOMETRIC VIEW)

DETAIL:

**MARRIAGE BEAD**

APPLICATION:

VERTICAL WALL, COLD-STORAGE

AWIP DETAIL NUMBER:

AWW-ACS-MB-001

DATE:

04/02/19

SHEET:

DRAWN BY:

MMF

1

OF

1

929 ALDRIDGE ROAD  
VACAVILLE, CA 95688  
TEL: (707) 359-2280  
FAX: (707) 359-2286  
WWW.AWIPANELS.COM

**All Weather**  
Insulated Panels

