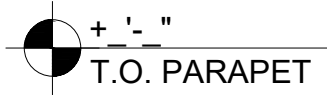


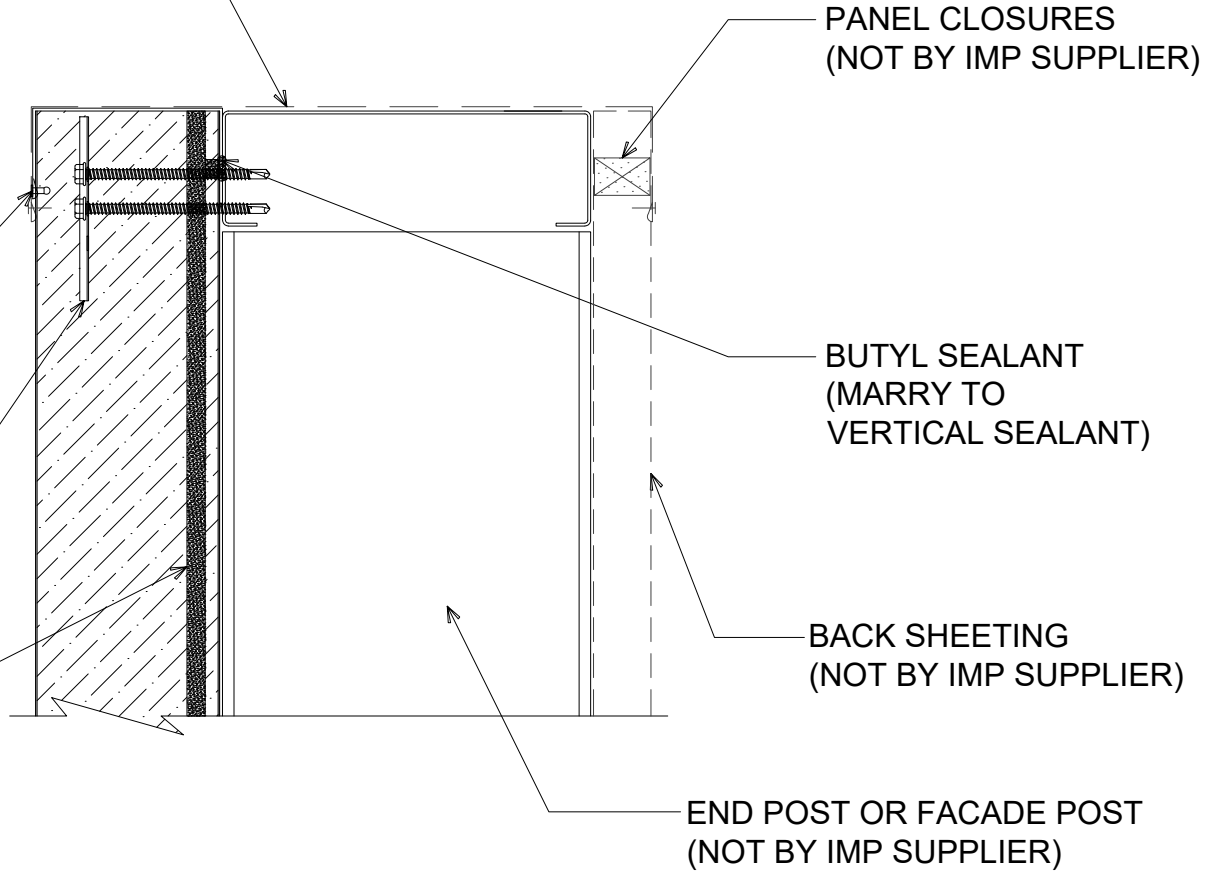
PARAPET CAP TRIM & ALL  
ACCESSORIES BY OTHERS  
(NOT BY IMP SUPPLIER)



"CT-04" CAP TRIM W/  
POP RIVETS 12" O/C

"WC-01" PANEL CLIP W/  
( ) 1/4 - 14 x \_ TEK 3 FASTENERS  
W/O WASHER AT PANEL JOINT

BUTYL SEALANT AT  
VERTICAL JOINT



# # PARAPET WALL

(SECTION VIEW)



DETAIL:	PARAPET WALL		SHEET:	1 OF 1
	APPLICATION:	VERTICAL WALL, COMMERCIAL & INDUSTRIAL	DATE:	02/07/23
	AWIP DETAIL NUMBER:	AWW-ACI-PW-001	DRAWN BY:	MMF

929 ALDRIDGE ROAD  
VACAVILLE, CA 95688  
TEL: (707) 359-2280  
FAX: (707) 359-2286  
WWW.AWIPANELS.COM

**All Weather**  
Insulated Panels

