

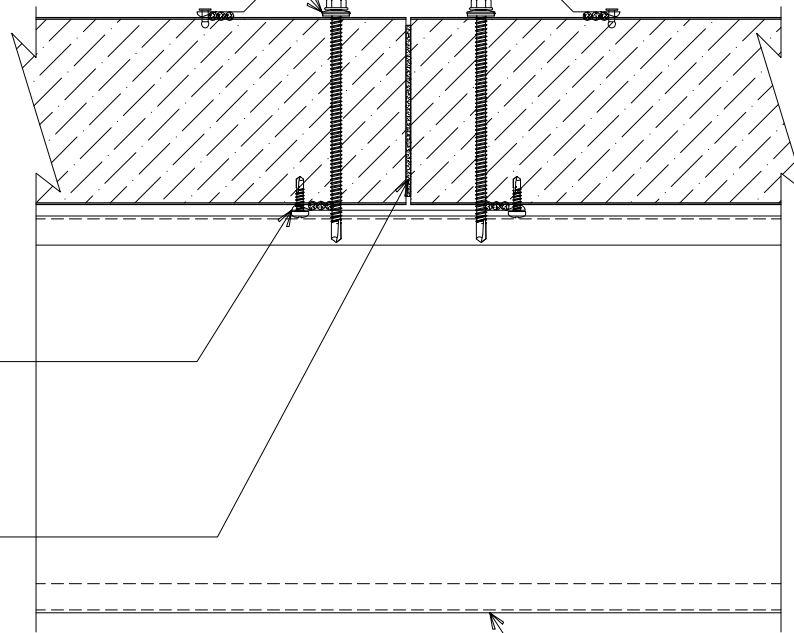
() 1/4 - 14 x _ TEK 3 FASTENERS
W/ WASHER AT EACH
SECONDARY SUPPORT

"WT-01" WALL TRANSITION TRIM W/
POP-RIVETS 12" O/C STAGGERED
(SET TRIM IN BUTYL SEALANT)

NOTE: "JC-01" JOINT
COVER MUST TUCK INTO
BASE FLASHING .

"JC-01" JOINT COVER W/
#10 x 3/4" PPH @ 12" O/C
(SET TRIM IN BUTYL
SEALANT)

ONE-PART EXPANDING
FOAM SEALANT AT WALL
TRANSITION (OPTIONAL)



SECONDARY FRAMING
(NOT BY IMP SUPPLIER)

PANEL TRANSITION - BUTT JOINT

(PLAN VIEW)

DETAIL:

PANEL TRANSITION - BUTT JOINT

APPLICATION:
VERTICAL WALL, COMMERCIAL & INDUSTRIAL
AWIP DETAIL NUMBER:
AWW-ACI-PT-001

DATE:
09/28/20
DRAWN BY:
MMF

SHEET:
1
OF
1

929 ALDRIDGE ROAD
VACAVILLE, CA 95688
TEL: (707) 359-2280
FAX: (707) 359-2286
WWW.AWIPANELS.COM

