

APPLY CONTINUOUS BEAD OF NON-SKINNING BUTYL SEALANT AND MARRY VERTICAL JOINT TO OTHER SEALED CONNECTIONS (I.E. WINDOWS & DOORS) AS NECESSARY TO EFFECT A COMPLETE WEATHER BARRIER.

"WC-01" PANEL CLIP W/ 1/4" - TEK FASTENERS W/O WASHER (SEE PANEL JOINT AND INTERMEDIATE SUPPORT DETAILS FOR FASTENING REQUIREMENTS)

NOTE: REFER TO CONNECTION DETAILS FOR SPECIFIC LOCATION(S) OF MARRIAGE BEAD(S).

CONTINUOUS SEALANT / TAPE ALONG PERIMETER FRAMING (NOT REQUIRED AT ALL FRAMING MEMBERS, REFER TO CONNECTION DETAILS FOR SPECIFIC LOCATION(S))

INTERIOR

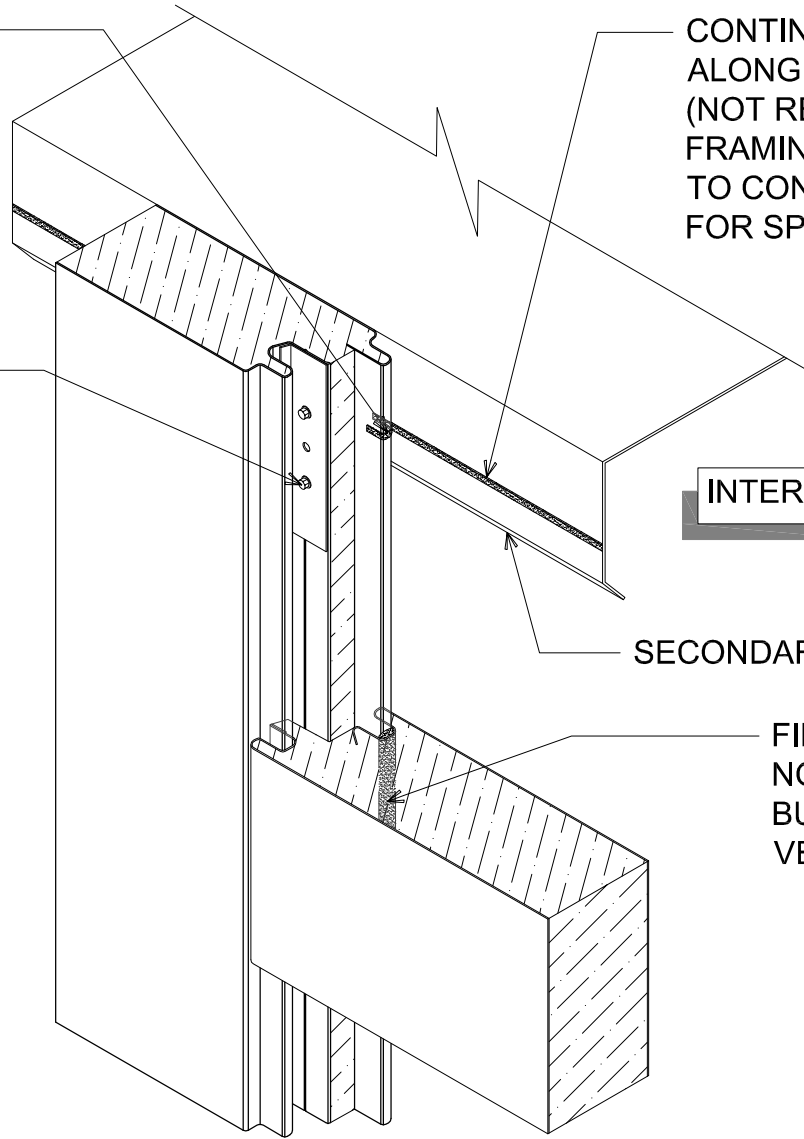
SECONDARY FRAMING MEMBER

FIELD APPLIED NON-SKINNING BUTYL SEALANT AT VERTICAL JOINT

EXTERIOR

MARRIAGE BEAD DETAIL

(ISOMETRIC VIEW)



DETAIL:

MARRIAGE BEAD

APPLICATION: VERTICAL WALL, COMMERCIAL & INDUSTRIAL
 AWWP DETAIL NUMBER: AWW-ACI-MB-001

929 ALDRIDGE ROAD
 VACAVILLE, CA 95688
 TEL: (707) 359-2280
 FAX: (707) 359-2286
 WWW.AWIPANELS.COM

All Weather
 Insulated Panels



SHEET:

DATE: 03/19/19

DRAWN BY: IMF

1 OF 1