

"WC-01" PANEL CLIP W/  
( ) 1/4 - 14 x \_ TEK 3 W/O  
WASHER AT PANEL JOINT

BUTYL SEALANT AT  
VERTICAL JOINT

BUTYL SEALANT  
(MARRY TO VERTICAL  
SEALANT)

FIELD-CUT STANDING  
SEAM AS REQUIRED

FIELD-FILL WITH  
COMPRESSIBLE INSULATION  
(NOT BY IMP SUPPLIER)

SECONDARY FRAMING  
& SUPPORT ANGLE  
(NOT BY IMP SUPPLIER)

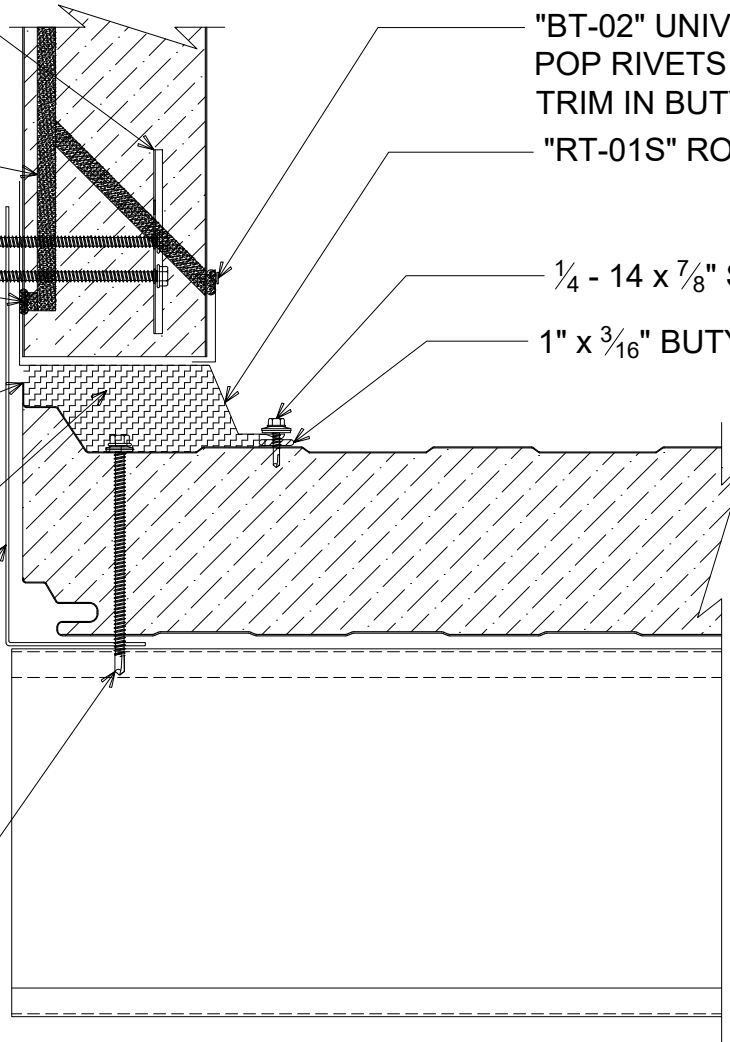
( ) 1/4 - 14 x \_ TEK 3 W/  
WASHER AT EACH PURLIN

"BT-02" UNIVERSAL L W/  
POP RIVETS 12" O/C (SET  
TRIM IN BUTYL SEALANT)

"RT-01S" ROOF TO WALL TRIM

1/4 - 14 x 7/8" STITCH TEK 24" O/C

1" x 3/16" BUTYL TAPE SEALANT



# # RAKE TO WALL

(SECTION VIEW)



DETAIL: **RAKE TO WALL**

APPLICATION:  
SR ROOF, COMMERCIAL & INDUSTRIAL  
AWIP DETAIL NUMBER:  
SRR-ACH-RW-001

929 ALDRIDGE ROAD  
VACAVILLE, CA 95688  
TEL: (707) 359-2280  
FAX: (707) 359-2286  
WWW.AWIPANELS.COM



SHEET:

DATE: 02/09/23

DRAWN BY: MMF

1 OF 1